

# DEUTZ-FAHR 6040



EVOLVING AGRICULTURE.



# SMART EVOLUTION.



**Another model has been added to the DEUTZ-FAHR 60 series range of combine harvesters: the new 6040. Even with its entry level specification, this new 5 straw-walker machine still incorporates all the features of the other mod-**

**els and is guaranteed to deliver high productivity, premium comfort and low operating costs.**

The new 6040 reflects 100 years of experience and steadily evolving technology. Just as

in 1909 the KODEL & BOHEM combine stood as a landmark and a technological benchmark in terms of performance and quality applied to the processing of harvested grain, so today, the 6040 sets the standard in its particular



market segment. This combine harvester embodies all the key attributes of its illustrious stable-mates, in keeping with the objectives of

DEUTZ-FAHR design:

- Maximum performance harvesting every type of crop
- Excellent operating comfort and output
- Outstanding cleaning and exceptional grain quality
- Unrivaled ease of maintenance





# WITH DEUTZ-FAHR HEADERS, HARVEST POTENTIAL CAN BE MAXIMISED



Thanks to a planetary drive and a cutting frequency of 1,220 strokes/min, the knife cuts swiftly and cleanly through the crop, whatever the harvesting conditions.



Knife sections mounted alternately edge-up and edge-down suffer less wear and ensure a Cleaner cut every time.



Rapeseed attachment allows easy conversion of the standard grain header, increasing its harvesting versatility.



Sunflower attachment ensures that only the seed heads are harvested, for maximum effectiveness of the threshing operation.

Right from the first step of harvesting - the cut - the 6040 harvesting performance is on a par with higher rated machines. All the standout features of a Deutz-Fahr header are offered on this model too.

## The cleanest of cuts, every time

The DEUTZ-FAHR tandem cutting system, with planetary knife drive and an operating speed of 1,220 strokes per minute, guarantees a swift and precise cut. The bolted blades are extremely tough, unaffected by flying stones and other foreign matter. The header has a 610 mm diameter auger with fingers arranged spirally along its entire length, which are able to transfer high

volumes of the cut crop into the elevator channel. An heavy duty electrically operated reversing unit is designed to eliminate any overloading of the feeding system.

## Feeding elevator suitable for all applications

The new feeding elevator will handle and lift the heaviest of headers, which means even maize headers can be operated without difficulty, and power will always be transmitted smoothly and safely.

The machine is equipped as standard with 2 lift cylinders, and can be fitted with a third for applications requiring particularly heavy headers. Similarly, for heavy duty applications, there is the option of fitting 2HB drive belts for

maximum power output.

## Special equipment

The standard grain header can be fitted with an extension and two lateral blades, designed to ensure a clean cut and smooth crop intake when harvesting rapeseed.

For sunflower harvesting, there are special crop dividers and a transport roller that ensures only the seed heads of the crop are harvested, thereby increasing performance significantly.



## ADVANTAGES

- ▶ High performance headers with working widths of 4.2 m to 5.4 m
- ▶ Large diameter auger with spirally arranged feed fingers
- ▶ Planetary knife drive for high cutting frequency
- ▶ Folding crop dividers and hydraulic multi coupling for simple and rapid fitment / removal of the header
- ▶ Special attachments for rapeseed and sunflower harvesting





# MAXIMUM CAPACITY FOR MINIMAL THRESHING COSTS.



## **OPTIMUM HARVESTING OUTPUT**

The 6040 is built for economy, but the renowned effectiveness of the DEUTZ-FAHR threshing system remains undiminished. The threshing geometry of this new machine enables it to deliver extremely high output, while at the same time ensuring that grain and straw are handled gently and suffer no damage.

## **SEGMENTED CONCAVE**

With the exclusive DEUTZ-FAHR transverse segment system (optional), the

combine can be adjusted swiftly to different crops and conditions during the harvesting season, adopting preferred threshing/separation settings. In practice, this feature allows the operator to select the spacing between the rows of the different segments that will best suit the particular harvesting conditions. By accentuating the threshing action at the drum inlet, and the separating action at the outlet, the operator can reduce the load on the straw walkers and minimize the quantity of short straw deposited

on the sieves. With this type of setting, more than 90% separation is achieved even before the material has left the drum - a guarantee of higher productivity and increased quality.

## **STRAW-WALKERS**

Long enclosed straw-walkers provide excellent separation in all conditions, even when crops are harvested wet, or with a notably high weed content. For particularly dense crops, the straw-walkers can be fitted with racks designed to aerate the

## ADVANTAGES

- ▶ Threshing system giving thorough initial separation at the concave
- ▶ Generous 121° concave wrap angle
- ▶ Independent adjustment of drum-concave inlet and outlet gaps
- ▶ 600 mm diameter threshing drum with 8 rasp bars
- ▶ Conventional segmented concave (optional)
- ▶ High performance segmented concave (optional)
- ▶ Drum speed controlled electrically



advancing material more thoroughly. The straw-walkers are mounted on bearings to reduce noise and minimize power demand.



**OPTIMUM  
DRESCHER**

Drive systems are particularly simple, guaranteeing an optimum power driveline and low maintenance costs.



**LONG STRAW OR CHOPPED STRAW -  
ALWAYS TOP QUALITY TREATMENT.**





## ADVANTAGES

- ▶ High volume chopping rotor
- ▶ High performance built-in straw chopper
- ▶ Easy access to chopper blades for maintenance purposes
- ▶ Centralized adjustment of stationary blades



With the new DEUTZ-FAHR high volume straw chopper, the ground can be left ready for subsequent tillage.

The working width of this attachment is such that the chopped material can be spread uniformly over the full working width of the combine.

Engagement is easy and effortless, by way of a lever on the side of the machine - and with no tools required.

With the chopper blades easily accessible and the stationary blades extremely simple to adjust, time spent on maintenance and set-up operations is reduced to a minimum. With high power output from the engine and low power demand from the transmission, performance will remain steady even with the straw chopper in operation and substantial volumes of harvesting residues to manage.

The Deutz-Fahr threshing system will also deliver long straw in the ideal windrow condition for baling. In short, DF combine harvesters are renowned for gentle handling of both grain and straw, which makes perfect sense, given that straw is often an important complementary product in the farming industry.



# CROSS-FLOW AND VENTILATED CASCADE DOUBLE STEP: PREMIUM TECHNOLOGY IN A COMPACT PACKAGE.

The new 6040 boasts a cleaning surface area as big as any in its class: a generous 4.22 m<sup>2</sup>.

Another unique feature of this machine is the cross-flow fan, which takes in air across the full width of the combine and directs it through a sieve area with a cascade double step. With this design solution, typical of high horsepower machines, large quantities of chaff and

debris can be handled with maximum effectiveness, and perfectly clean grain is directed into the tank. In addition, the combine is especially easy to control, with performance output remaining constant throughout differing crop densities.

Another exclusive DEUTZ-FAHR feature is a returns system with two independent inlets, which ensures the returns will

be distributed uniformly on the preparation area, preventing area on the threshing system and avoiding unnecessary grain loss.

Any unthreshed heads can be treated by two re-threshers, so that the grain returned to the preparation area will be completely separated. Each of the re-threshers is equipped with a pair of special friction plates (adaptable to every type of crop, and interchangeable), guaranteeing outstanding performance in all kinds of operating conditions.

The system incorporates a special safety cutout designed to avoid possible overloads that could result in unnecessary repairs.

## Big volumes, fast unloading

Fast and uninterrupted harvesting: the 6040 is equipped with a 6500-litre grain tank and unloads at 75 litres/sec. An unloading auger 5 metres long (optional) allows easy positioning alongside the trailer, even with the widest header. The grain sampling hatch is located within easy reach of the driver's seat, to allow spot checks on the grain sample quality. Just as easy to check is the amount of grain in the tank, by way of the electric level indicator and the sight glass in the tank panel.



The cleaning system is top class in terms of sieving area and performance. With a cross flow fan and double drop step, the 6040 is able to deliver levels of performance hitherto unknown in this segment of the combine market.



The double grain return prevents any overloading of the threshing system - yet another feature underlining the superior performance capabilities of this combine





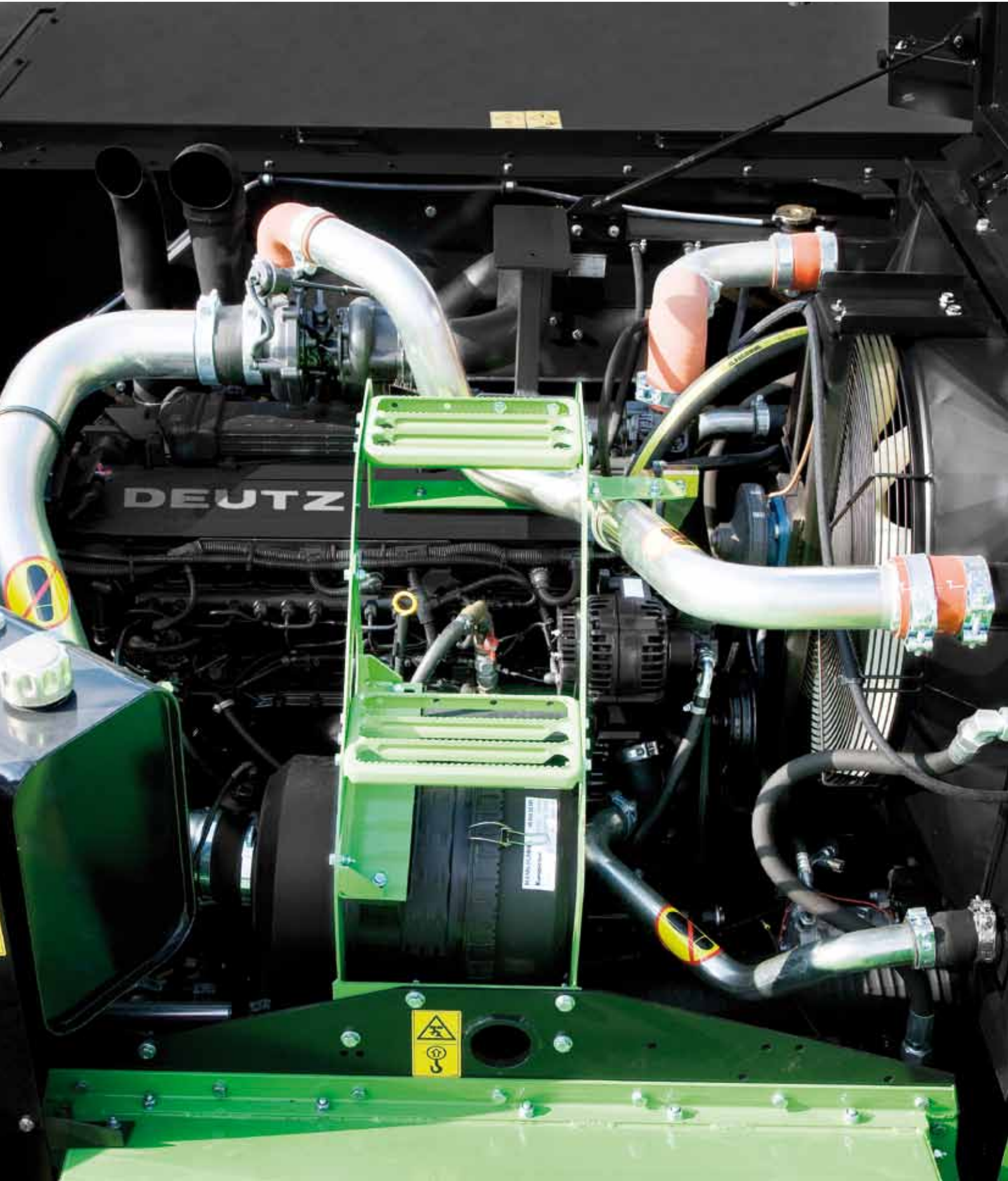
## ADVANTAGES

- ▶ Turbine fan delivering a constant flow of air to the sieves
- ▶ Sieving system with two drop steps
- ▶ Two return inlets to preparation area with re-thresher for gentle treatment of any unthreshed heads
- ▶ Air flow controlled electrically from inside the cab
- ▶ Fan air speed easily controlled via the CCM





**NEW DEUTZ ENGINES SUCCEED IN THE MOST DIFFICULT CHALLENGE OF ALL: SURPASSING THEMSELVES.**



## ADVANTAGES

- ▶ **DEUTZ Common Rail 24-valve engine** guaranteeing the highest levels of performance and exemplary fuel economy
- ▶ **Hydrostatic transmission with 3 speed ranges:** the right ratio for every situation
- ▶ **Hydrostatic pump flange-mounted directly to engine**

Power, flexibility, fuel economy and durability are the proven features of Deutz engines: the capacity to work for hours on end, even in difficult conditions, enveloped in dust and exposed to extreme temperatures.

With 222 horsepower available, the 6040 has plenty in reserve to tackle all types of crop and ground conditions.

### **Productivity and savings**

Today's liquid-cooled DEUTZ engines are characterized by high power and constant efficiency. Equipped with common rail fuel injection, 24 valves and electronic control, these engines are able to

deliver optimum power output, which is sustained even through excessive loading with no loss of productivity. Thanks to the high technological level of engines installed in DEUTZ-FAHR combine harvesters, hourly rates of fuel consumption are the lowest on record. This, together with a highly efficient threshing system, translates into a fuel requirement per tonne of threshed crop as low as any on the market for machines of comparable size and class.

### **A doubly efficient transmission system**

Another feature of this DEUTZ-FAHR machine is its compact transmission system,

with power take-off from both ends of the engine. The design makes for swift and simple maintenance, and ensures optimum power output to the various drive units of the combine. Drive belts can be replaced easily and swiftly, so that less time is wasted and the harvesting operation benefits accordingly.

The combine is more compact, and more manoeuvrable as a result.

**Supreme simplicity of the transmission systems and ease of access to components results in fast and effective maintenance**





# COMMANDER CAB EVO. THE EVOLUTION OF TWO SPECIES: COMFORT AND FUNCTIONALITY.

The new COMMANDER CAB EVO is the perfect place to be when out in the fields during the long and dusty days of harvest time. The new console ensures all the controls are within easy reach and provides an unobstructed view to the right of the machine. A new climate control system ensures the operator will always enjoy ideal working conditions. The cab has plenty of storage space where the operator can store documents and personal items.



**Control levers positioned on the left hand side afford optimum access to the driver seat.**



**With the Commander Stick, the operator has everything under control and can focus on the actual job of harvesting with greater freedom and comfort.**



## ADVANTAGES

- ▶ Spacious and well-appointed cab, with superior driving comfort
- ▶ New on-board computer controlling the main production parameters of the combine
- ▶ CCM installed on the right hand upright, comfortably within the operator's field of vision but still allowing a completely clear view of the header
- ▶ CommanderStick controlling all key header and driving functions
- ▶ Outstanding visibility of the entire working area



The new Combine Control Management system monitors performance of the machine in actual time.

This monitor allows the operator to check the output performance and system drive speeds at any given moment. Information visible at a glance:

- Ground speed
- Grain losses
- Total and partial harvested areas
- Drum speed
- Fan speed
- Total hours operation of engine and threshing system

There is also an array of indicators and alarms that will warn the operator immediately of any malfunction developing in the machine.

### WORK LIGHTS

A powerful array of 8 work lights on the cab will illuminate the work area even in the darkest conditions. The beam produced by the HB3 lamps is exceptionally bright, but without unwanted glare or reflections.

Completing the set of work lights are two further units on the straw-walker hood, and at the end of the unloading auger.

**CCE**  
COMMANDER CAB EVO





# DEUTZ-FAHR COMBINES. QUALITY THAT LASTS.







### **Lasting value**

Modern equipment and tooling resources at the DEUTZ-FAHR factory ensure faultless assembly and high quality finishing of every machine built on the premises. All exposed surfaces of the combine are treated cathodically to ensure protection against any kind of corrosion, whilst all painted parts are zinc-coated to guarantee long term resistance and efficiency of the finish. Thanks to the adoption of these vanguard solutions, DEUTZ-FAHR combine harvesters are able to command a high resale value, inspiring customer confidence in the initial investment.

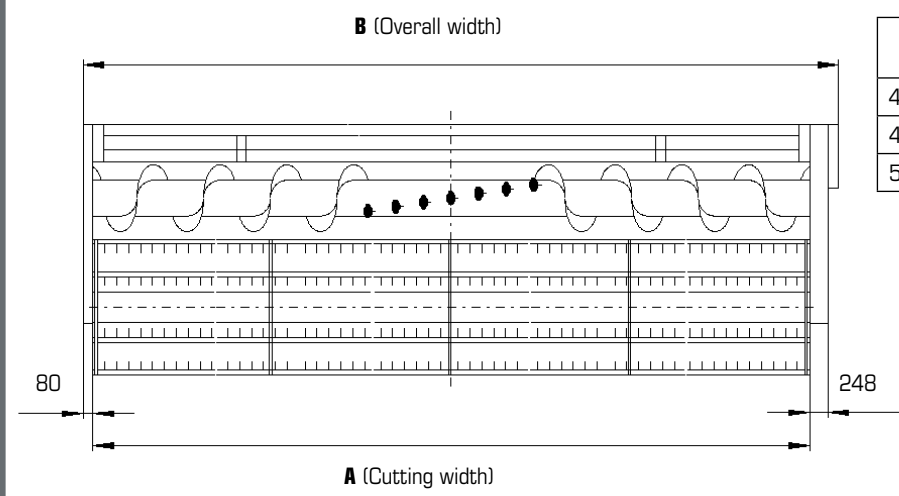


TECHNICAL DATA

# DEUTZ-FAHR

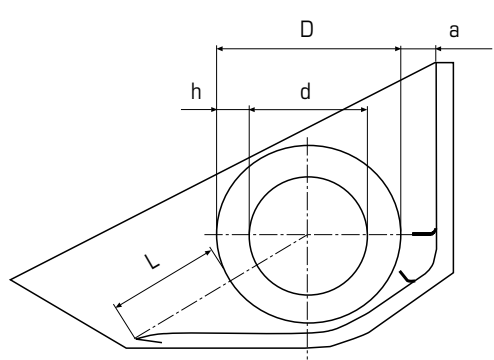
## 6040

Type	6040	
<b>Header</b>		
Manual engagement	standard	
Cutting width	4,20 / 4,80 / 5,40	
Hydraulic cutting height adjustment	mm	from -300 to +1.370
Oil-immersed planetary knife drive (1220 strokes/min)	standard	
Long right and left crop dividers, fixed	standard	
Number of crop lifters	13 to 17, depending on cutting width	
Automatic ground contact pressure adjustment, preselection of cutting height	standard	
Transport towing hitch	standard	
Header trailer	on request	
Hydraulic multi-coupling	on request	
Automatic towing hitch	on request	
Rapeseed conversion kit for header with side cutter on right operated by separate hydraulic control	on request	
Rapeseed side cutter on left, operated by separate hydraulic control (for rapeseed header only)	on request	
Sunflower conversion kit for header	on request	



Type	A (mm)	B (mm)	Weight (kg)
4,20 m	4.187	4.515	1.280
4,80 m	4.796	5.124	1.420
5,40 m	5.406	5.734	1.540

**Dimensions in mm**  
 L = 480  
 D = 610  
 d = 350



<b>Pick-up reel</b>		
6-bar reel with hydraulic height adjustment	standard	
Hydraulic fore and aft adjustment	standard	
Electric speed control	rpm	from 16 to 45, infinitely variable

# DEUTZ-FAHR

## 6040

Type	6040	
<b>Threshing drum</b>		
Flanged threshing drum		standard
Manual engagement		standard
Diameter	mm	600
Width	mm	1.270
Bars	n°	8
Electric variable speed control	rpm	420 - 1.250
Threshing drum speed reducer (optional)	rpm	210 - 625
Electric drum speed control		standard
<b>Concave</b>		
Bars	n°	15
Wrap angle	degrees	121
Separation surface area	m <sup>2</sup>	0,95
Stone trap, foldable		standard
Segmented concave		on request
Laterally operated de-awner plates		standard
Independent manual adjustment of concave inlet/outlet space		standard
Conversion for maize harvesting, grain or CCM		on request
<b>Straw-walkers</b>		
Enclosed straw walkers		standard
Elements	n°	5
Steps	n°	5
Ball bearing supports		standard
Shaking surface area	m <sup>2</sup>	5,28
Total separation surface area	m <sup>2</sup>	6,23
<b>Chopping and spreading</b>		
High volume straw chopper with manually adjustable spreading width		on request
Built-in chaff spreader		on request



TECHNICAL DATA

# DEUTZ-FAHR 6040

Type		6040
<b>Cleaning system</b>		
High performance cross-flow fan		standard
Pre-sieve area		standard
Cleaning area illumination		standard
Sieve cleaning surface area	m <sup>2</sup>	4,75
Electric fan speed control		standard
<b>Returns</b>		
Independent right/left returns with re-threshing system		standard
Returns overload safety cutout		standard
2 speeds		standard
<b>Grain tank</b>		
Capacity	litres	6.500
Unloading in any position		standard
Visual and audible grain tank level indicator		standard
Interior light		standard
Grain sample access from driving position		standard
5-metre unloading auger		on request
Unloading rate		75 litres/sec
Mechanical engagement of unloading system		standard
<b>DEUTZ 4 valve Common Rail engine</b>		
TCD 2012 L06 4V - 6 cyl. 6057 cc. liquid cooled TIER 3 (97/68/EC)	kW / HP	163/222
Fuel tank capacity	litres	345
Optional fuel tank	litres	450
<b>Transmission / Brakes / Steering</b>		
Hydrostatic transmission with 3-speed gearbox		standard
Forward speed	km/h	0 - 26,0
Reverse speed	km/h	0 - 14,0
Disc brakes mounted to halfshafts		standard
Parking brake acting on gearbox primary shaft		standard

TECHNICAL DATA

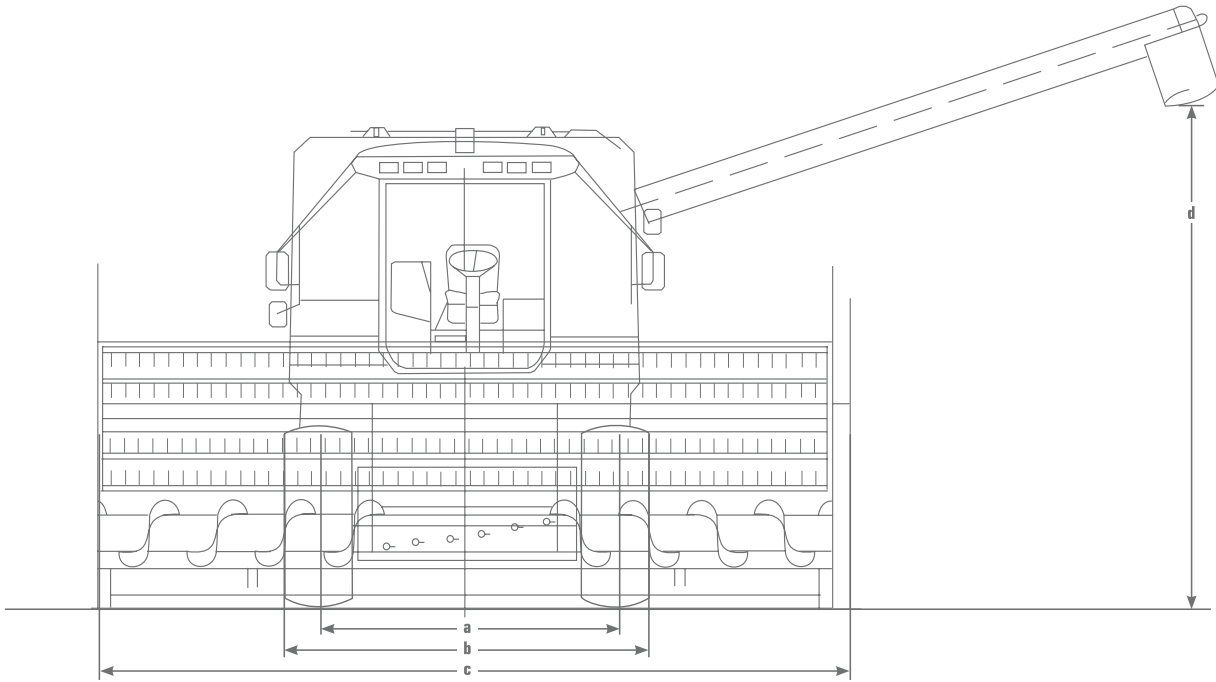
# DEUTZ-FAHR

## 6040

Type	6040	
<b>Tyres</b>		
Front, 620/75 R30 168 A8		standard
Front, 650/75 R32 167 A8		on request
Front, 800/65 R32 STR 172 A8		on request
Rear, 320/80 R18		standard
Rear, 405/70 R20 155 A2		on request
<b>Cab</b>		
CommanderCab EVO panoramic windscreen with laminated tinted glass, comfort driver seat with armrest, co-driver seat		standard
CommanderStick multifunction control		standard
CCM (Combine Control Management)		standard
Control levers grouped together on operator's left		standard
6 work headlights on cab roof, 1 work light on grain tank		standard
Heater and air-conditioning		standard
<b>Safety devices</b>		
Safety clutch on top shaft of elevator, feed auger, reel, straw walker drive and grain auger		standard
Electronic speed monitor on straw walkers, grain elevator and returns elevators		standard
<b>Maintenance</b>		
Manual centralized lubrication system		standard
Grease points - 8 on left, 6 on right		standard
<b>Weights</b>		
without header	kg	10.570
with header 4.20 m	kg	11.645
with header 4.80 m	kg	11.740



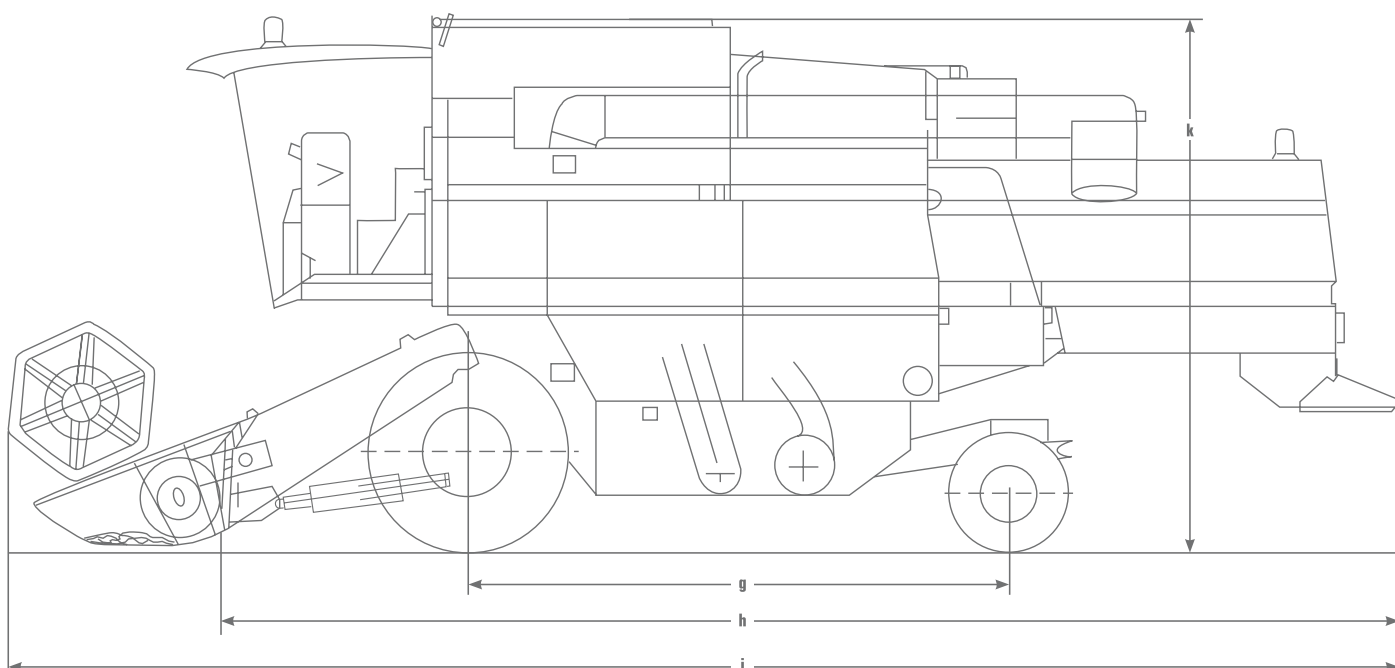
# DEUTZ-FAHR 6040



Type		6040
<b>Dimensions in mm</b>		
<b>a</b> Track width <sup>1)</sup>	front	2.670
	rear	2.355
<b>b</b> Width <sup>1)</sup> without header		3.000
<b>c</b> Width with header	4,20m	4.515
	4,80m	5.124
	5,40m	5.734
<b>d</b> Height to bottom edge of unloading auger with standard tyres		4,20

<sup>1)</sup> with 620/75 R30 tyres

# DEUTZ-FAHR 6040



Type	6040
<b>Dimensions in mm</b>	
<b>g</b> Wheelbase	3.890
<b>h</b> Length without header	8.770
<b>i</b> Length with header (crop divider folded)	10.620
<b>k</b> Height to top of grain tank <sup>1)</sup>	3.850

<sup>1)</sup> with 620/75 R30 tyres





# SURE AND SAFE WITH ORIGINAL DEUTZ-FAHR.



## **Professional service is wise.**

Without doubt – many can repair much. But only your DEUTZ-FAHR specialist dealer knows your combine inside and out. Only your dealer has regularly trained mechanics and experts on call. Only dealers have the special tools and diagnostic equipment required for competent diagnosis and inspection. All this gives you peace of mind – without doubt.

## **Original parts make good sense.**

As you placed your trust in the original combine, we recommend you use only original parts when required. Only these comply with the high quality and safety standards of DEUTZ-FAHR and ensure correct function and operation without repeat problems – guaranteed.

## **DEUTZ-FAHR lubricants**

We recommend genuine DEUTZ-FAHR lubricants. The outstanding quality of this product range, which is made exclusively for DEUTZ-FAHR, ensures that your combine always receives exactly what it needs.



**Your DEUTZ-FAHR dealer will be pleased to answer your questions:**

The above specifications refer to tractors with all available equipment. For standard equipment and options, refer to the current price list and ask your local dealer for details.

Code: 308.8505.3.6 - 02/11 - CFV

## **SAME DEUTZ-FAHR DEUTSCHLAND GmbH**

Deutz-Fahr-Straße 1 \_ D-89415 Lauingen \_ Germany \_ [www.samedeutz-fahr.de](http://www.samedeutz-fahr.de)

## **SAME DEUTZ-FAHR U.K. LTD.**

Barby Lane, Barby, Nr Rugby \_ CV23 8TD \_ WARWICKSHIRE \_ UK



**EVOLVING AGRICULTURE.**