

Operator's Manual

Combine

FENDT 8300

FENDT 8350

+ Auto Level

+ Rotary Separator



Operator's Manual

Published October 2007

by AGCO A/S,

Dronningborg Allé 2, DK-8900 Randers

Publication No. EN D3150100M10

Edition 1

© AGCO A/S 2007

This Operator's Manual applies from

combine serial number: 62018

and

cutting table serial number: 943265

1	General Information	9
1.1	Appropriate Use.....	11
1.2	Preface.....	12
1.3	Product Identification.....	13
1.4	Sectional Drawing and Parts Identification.....	14
2	Safety	17
2.1	General Safety Precautions.....	18
2.2	Attention - Warning Symbols.....	19
2.3	Safety Precautions.....	20
2.4	Road Transport.....	22
2.5	CE Marking and Type Plate on the Combine.....	23
2.6	Warning/Instruction decals.....	34
2.7	Position of CE Markings and Type Plate.....	39
3	Operation, Controls and Cab	43
3.1	Before Start.....	45
3.2	Operator Cab, Arrangement and Controls.....	48
	Optional Extra.....	50
3.3	Safety Precautions.....	51
3.4	Starting and Stopping the Engine.....	52
	Starting the engine.....	52
	Stopping the engine.....	53
3.5	Drive Controls.....	54
	Multi-Function Lever.....	54
	Adjustable Armrest.....	55
	Changing Gears.....	55
	Reduced Engine Revolutions in Road Transport (Speed Matching System).....	56
	Steering column.....	57
	Brakes.....	57
	Adjustment of Operator Seat.....	58
	Adjustment of Air-Suspended Seat.....	58
	Ladder.....	59
	Removable Ladder.....	59
	Lights.....	60
	Main Light and Work Light.....	60
3.6	Operator Cab, Ventilation.....	61
	Air-Conditioning.....	61
	Using the Air-Conditioning.....	61
3.7	Printer.....	62
	Exchanging Paper and Ribbon in Printer.....	62
	Inserting the Paper Roll.....	62
	Fitting the Ribbon.....	62
3.8	Four-Wheel Drive.....	63
	Activating Four-Wheel Drive.....	63
	Forward Speed.....	63
	Operation of Four-Wheel Drive.....	64
	Service.....	64
3.9	Other Optional Extra.....	65
	Reversing Camera.....	65
	Electrically Adjustable Rearview Mirrors.....	65
4	Operation, FIELDSTAR®	67
4.1	Safety Precautions.....	69
4.2	FIELDSTAR®.....	71
	Menu Structure and Operation.....	71
	Operating FIELDSTAR® on Terminal.....	72

Contents

	Operating the Terminal by Remote Control in the Multi-Function Lever	73
	Contrast and Brightness Control	74
	Cleaning the Terminal	74
	Data Cards	75
	FIELDSTAR® Menu Structure	75
4.3	Harvest Menu	77
4.4	Main Menu	81
4.5	Monitoring	83
	Shaft Speeds	83
	Engine Monitoring/Alarm	83
	Engine Safety Alarm	84
	Information	84
	Shaft Speeds	85
4.6	Harvesting Data	87
	Accumulated Machine Data	87
	Trip Data and Field Data	87
	4.6.1 Data Logging in General	88
	4.6.2 Using Data Logging	90
	Creating a New Field Job	90
	Starting a Job	92
	Field Map for a Job	94
	Data Logging Messages	96
	4.6.3 Data Logging Setup	98
	Marker Setup	99
	Selecting Position Data	100
	Setup of Logging Rate	100
	4.6.4 Using Markers	101
4.7	Operator Manual	103
	Harvest Settings	103
	Routine Servicing	103
	FIELDSTAR®	103
4.8	Diagnostics	105
	Electric Diagnostics	105
	Yield Meter	105
	System Information	105
	System Setup	105
	Programming Computer	105
	Control	105
	GPS Information	106
	DGPS Information	107
	Programming	109
	Diagnosis	109
	Screen Calibration (Touch Calibration)	109
4.9	Coding	111
	Clock Adjustment	111
	Language	111
	Area Measuring	112
	Table Calibration	113
	Returns Volume	113
	Grain loss monitor	113
	Concave Calibration	114
	Constant Flow	114
	Wheel Track and Auto Level Combine	114
	Coding of Electrical Straw Deflectors	115
	Straw chopper vibrations	115
	Lead Time and Lag Time	116
	Calibration of Actuator for Electrical Sieves	117
4.10	Settings	119
	Harvest Settings	119
	Table Settings	122

Machine Settings,	124
4.11 Returns Volume Monitor.	126
Coding,	126
4.12 Grain Loss Monitoring	127
Sensors	127
Adjustment of Grain Loss Sensors,	127
4.13 Shaft Alarm Calibration.	128
4.14 Straw Chopper Vibrations.	129
Coding	129
4.15 Yield Meter.	130
4.15.1 Yield meter (Isotopic).	130
Measuring Principle	130
Mass Flow Measuring	130
Yield Meter Status	131
Using the Yield Meter.	131
Calibration of Yield Meter	131
4.15.2 Micro-Trak Yield Meter	132
Measuring Principle	132
Zero Point for Micro-Trak Yield Meter	132
Calibration of Micro-Trak Yield Meter	133
Slope Compensation for Micro-Trak Yield Meter	133
4.15.3 Yield Meter Calibration.	134
4.16 Moisture Meter	136
Continuous Moisture Measuring	136
Measuring Principle	136
Using the Moisture Meter	136
Cleaning the Moisture Meter	137
Calibration of Moisture Meter.	138
4.17 Cutting Height Control	140
Cutting Height Control Setting and Operation	140
Coding of Table.	141
4.18 Field Pressure Control.	142
Field Pressure Control Setting and Operation	142
4.19 Auto Level Table	144
Bleeding	144
Coding of Auto Level Table.	145
Calibration of Table Angle.	145
4.20 Operation of Auto Level Table	146
Manual Control.	146
Levelling at Turns	146
4.21 Interaction Between Table Controls.	147
4.22 Checking and Adjusting the Ground Sensors.	148
4.23 Constant Flow	149
Start-up and Adjustment of Constant Flow	149
Constant Flow Engagement	151
5 Operation, Auto Level Combine	153
5.1 Safety Precautions.	155
Safety System	156
5.2 Combinations.	157
Selecting Combination	157
5.3 Auto Level Combine	158
Manual Control of Auto Level Combine	158
5.4 Auto Level Combine/Table	159
Combine	159
Transport,	159
Auto Level table	160
5.5 Calibration of Auto Level Combine	161

Contents

	Errors during Calibration	162
5.6	Coding of Auto Level Table	162
	Zero Cutting Height	162
5.7	Attachment/Removal of Table	163
5.8	Operation of Auto Level Combine/Auto Level Table	164
	Combinations	164
	Priority of Hydraulic Functions	165
5.9	Safety System, Auto Level	166
	Automatic Control of the Tilt Sensor Function	166
	Safety System	166
	Hose Breach Protection for Auto Level Hydraulics.	167
5.10	Troubleshooting	168
	Mechanical Connections.	168
	Checking Sensor Adjustment and Inclinometer	168
	Machine Not Levelling Correctly.	169
5.11	Servicing and User Tips	170
	Retrofit of New FIELDSTAR® Auto Level Job Computer and Sensors	170
	Unintentional Use of Manual Keys in Automatic Mode	170
	Diagnostics - Auto Level Combine Functions and Sensors	170
6	Engine	171
6.1	Safety Precautions.	173
6.2	Engine Types	174
6.3	Air-Intake	174
	Filter System.	174
6.4	Cooling System	175
	Rotary Screen and Dust Aspirator	175
	Coolers	175
	Coolant	176
	Checking the Fan Belt Tension.	176
6.5	Fuel System	177
	Filter change	178
6.6	Engine Oil/Change.	179
	Oil and Filter Change	179
6.7	Cleaning the Engine Compartment	179
6.8	Electronic Engine Management	180
6.9	Engine Trouble Shooting	180
	EEM3 Electronic Engine Management - Failure Codes (Self-Diagnosis)	180
7	Cutting Tables	183
7.1	Safety Precautions.	185
7.2	Attachment of Table, Standard and Auto Level	186
	Alignment of Table	187
7.3	Removal of Table.	188
	Table Trailer	188
	Attachment of Combine and Trailer	189
	Supports	189
7.4	Reel	190
	Reel Adjustment Up/Down, Fore/Aft	190
	Bleeding	190
	Reel Rotation	191
	Reel Tine Bars.	191
	Adjustment of Reel in the Table	191
7.5	Knife	192
	Knife and Knife Drive	192
	Knife Adjustment	192
7.6	Feeding	193

	Table Auger	193
	Cut-Off Strip	193
	Replacement of Feathering Fingers	193
	Auger Flight Extensions, 20-22-25-30' Tables	193
	Reversing	194
7.7	Transmission	195
	PowerFlow Table, Knife Drive and Table Auger	195
	Slip Clutch for Table Auger	195
7.8	PowerFlow Table	196
	Inspection and Start-Up of PowerFlow Belts	196
	Adjustment of Belts	196
	Front Scrapers	197
	Rear Scrapers and Adjustment of Bearing Housings	197
	Table Bottom	197
	Cleaning	198
7.9	Crop Lifters	198
	Using Crop Lifters	198
7.10	Vertical Knives, Rape Auger and Straw Dividers	199
	Vertical Knife	199
	Mounting of Vertical Knife	199
	Rape Auger	199
	Torpedo Divider and Straw Divider Bow	200
	Mounting of Straw Dividers	200
	Adjustment of Torpedo Divider	200
7.11	Fixed Table Auger Fingers	201
	Using Fixed Table Auger Fingers	201
	High Table Sides	201
7.12	Main crop elevator	202
	Crop Elevator Chain	202
	Transmission for Table	202
	Stone Trap	202
	Initial Adjustment of Cutting Height Indication	203
8	Operation of Machine and Cutting Table	205
8.1	Safety Precautions	207
8.2	Operation of Table	208
	Table Height and Table Automatic Control	208
	Cutting Height Control	209
	Field Pressure Control	209
	Preset Cutting Height	210
	Auto Level Table	210
	Table Engagement - Emergency Stop	211
	Slip Clutch	211
8.3	Threshing Unit Transmission	212
	Threshing Unit Engagement	212
	Cylinder Variator	212
	Turning Tool for Cylinder	213
8.4	Concave Setting, Electrically Adjustable	214
	Operation of Concave	214
	Concave Setting	214
8.5	Threshing	216
	Concave Filler Plates	216
	Straw Walkers	216
	Rear Beater Curtain	217
8.6	Straw Chopper and Spreader Hood	218
	Straw chopper	218
	Adjustment of Spreader Hood	219
	Counter Knives and Cross Bar	220
	Replacement of Knives	221

Contents

8.7	Fanning Mill and Sieves	222
	Fanning Mill	222
	Shaker Shoe	222
	Shaker Shoe with Electrical Sieves	223
	Manual Adjustment of Sieves	223
	Cleaning of Sieves and Main Grain Pan	224
	Cleaning the Sieves	224
	Shaker Shoe Light	225
	Special Sieves	226
8.8	Internal Grain Transport	227
	Auger Housing/Elevators	227
	Returns Thresher	227
	Tank Filling Auger	228
	Grain Tank	229
	Unloading Auger	230
	Unloading Auger Clutch	230
	Unloading Tube	231
8.9	Rotary Separator	232
	Change of Rotor Revolutions	232
	Concave Setting	232
8.10	Straw hood	233
	Alarm switch for straw hood blocked	233
	Blockage in straw hood	233
8.11	Chaff Spreader	234
	Setting	234
8.12	Maize Threshing	235
	Attachment of Maize Header	235
	Area measuring	235
	Main crop elevator	236
	Concave/Cylinder/Stone Trap	236
	Concave/Initial Settings	236
	Threshing cylinder	236
	Rotary separator	237
	Shaker Shoe	237
	Machine with Electrical Sieves	237
	Straw walkers	237
	Bottom Auger Cover Plate	238
	Scrapers	238
	Rear Beater Curtain	238
	Straw chopper	238
8.13	Suggested Harvest Settings	239
8.14	Threshing	240
9	Transmissions	241
9.1	Safety Precautions	243
9.2	Adjustment of Transmissions	244
	General	244
	Threshing Unit Clutch	244
	Hydrostatic Transmission	244
9.3	Transmissions	245
	Rear Beater	245
	Main Crop Elevator and Table	245
	Straw chopper	245
	Threshing cylinder	246
	Unloading Auger	246
	Shaker Shoe and Chaff Spreader Counter Drive, and Straw Walker Drive	247
	Filling and Returns System Countershaft,	248
	Returns Elevator and Returns Thresher	248
	Tank Filling Elevator and Tank Filling Auger	249

	Dust aspirator	249
	Rotary screen	250
	Fanning Mill	251
	Rotary Separator	251
	Alternator and Fan,	251
	Air-conditioning	252
9.4	Transmission Diagram, Left-Hand Side	254
9.5	Transmission Diagram, Right-Hand Side	256
10	Hydraulics	259
10.1	Safety Precautions	261
10.2	Hydraulic System, Standard Combine	262
	Hydrostatic Transmission	262
10.3	Hydraulic System, Four-Wheel Drive	263
	Hydrostatic Transmission	263
10.4	Oil Change	264
	Draining Oil	264
	Refilling Oil	264
10.5	Filter Change	265
	Return Oil Filter	265
	Storage of Hydraulic System	265
10.6	Auxiliary Hydraulics	266
	Functions and Auxiliary Hydraulics	266
	Reel Adjustment Fore/Aft - Up/down	266
10.7	Hydraulics Diagram, Standard Combine	268
10.8	Hydraulics Diagram, Auto Level Combine	270
10.9	Hydraulics Diagram for Chaff Spreader	272
11	Maintenance	273
11.1	Safety Precautions	275
11.2	Undercarriage	277
	Wheel Nut Torques	277
11.3	Tyre Pressure	278
11.4	Lubrication Chart	280
	Daily/10 Hours (Red)	280
	50 hours (blue)	280
	100 hours (yellow)	280
	200 hours (white)	281
	11.4.1 Lubrication Chart	282
	11.4.2 Lubrication Points, Auto Level Combine	284
11.5	Lubricants and Operating Fluids	285
11.6	Maintenance Required	286
11.7	Gear Oil Change	288
	Gearbox	288
	Final Drives	288
11.8	Air-Conditioning	289
	Diagram for air-conditioning	289
	Maintenance	289
11.9	Cleaning and Off-Season Storage	290
	Cleaning	290
	Off-season storage	291
	Storage of Engine, Fuel System and Hydraulic System	292
	Periodical Start-Up	292
	Removal of Main Crop Elevator	293
	Removal of Elevator Chains	293
	After Off-Season Storage	293
11.10	Adjustment of Brakes	294

Contents

Adjustment of Foot Brakes, Disc Brakes	294
Adjustment of Parking Brake, Drum Brake.	294
11.11 Dealer Servicing Schedule for FENDT Combine Range.	295
12 Electrical System	301
12.1 Safety Precautions.	303
12.2 Electrical System	304
Charging System	304
Electric Boxes and Main Switch	304
12.3 External 12V connectors	305
12.4 Electro-Hydraulic System	307
Hydraulic safety	307
12.5 Key to Signatures for Wiring Harness	308
Wire Codes	308
Component Codes	308
12.6 Position of Connectors in Electric Box.	309
12.7 Fuses and Relays, Electric Box and Cab	310
12.8 Key to Symbols	312
12.9 Fuses, Alphabetical	313
12.10 Fuse Ratings.	314
12.11 W-Connecting Points.	315
12.12 Diagrams survey	316
12.13 Diagrams	319
13 Specifications	365
13.1 Dimensions and Specifications	365
14 Index	369

1. General Information

Contents

1.1	Appropriate Use.....	11
1.2	Preface	12
1.3	Product Identification	13
1.4	Sectional Drawing and Parts Identification.....	14

1. General Information

1. General Information

1.1 Appropriate Use



Appropriate use:

This self-propelled combine harvester is manufactured exclusively for usual agricultural purposes (appropriate use).

Any other use is considered as being contrary to the appropriate use. AGCO declines all liability in cases of physical damage or injuries resulting from non-appropriate use. The risk lies exclusively with the user.

The conformity and strict adherence to the operating, maintenance and repair requirements specified by AGCO are also essential factors for appropriate use.

This self-propelled combine harvester may be used, serviced and repaired only by personnel having full knowledge of its specific features and who are aware of the danger involved and the applicable safety rules (prevention of accidents).

It is the responsibility of the owner/user to ensure that prescribed safety precautions and other general technical, health and safety and road-safety rules are observed.

AGCO disclaims all liability to any claim resulting from the fitting of non-approved parts or accessories or unauthorised modification or alteration.

Customers are strongly recommended to contact an AGCO dealer in the event of after-sale problems and for any adjustments that may be necessary.

In accordance with the Company's policy of continuous improvements to its products, alterations in the specifications may be made at any time without notice.

The Company accepts no responsibility for any discrepancies which may occur between the specifications of its machines and the descriptions thereof contained in its publications.

This machine has been designed and produced in conformity with the machine directive 98/37/EF. An EU declaration of conformity is supplied with the machine.

This machine has been tested according to the EEC directive 77/311/EEC and ISO 5131-1982
Noise level: FENDT 8300 RS = 78 dB (A)
Noise level: FENDT 8350 RS = 78 dB (A)

1. General Information

1.2 Preface

This Manual

The purpose of this manual is to enable the owner/operator to handle and maintain the combine efficiently. Time spent in becoming familiar with the Operator's Manual now will save time in the field.

Wide variations in operation conditions make it impossible for the Company to make comprehensive or definite statements in its publications concerning performance and the use of its machines, or to accept liability for any damage which may result from errors or omissions.

The specifications and illustrations contained in this manual pertain to combines manufactured for specific countries. Due to differing laws and requirements in various countries, some apparent discrepancies may result between any particular combine and those depicted in this manual. Some accessories and optional equipment appearing in this manual are not necessarily available in all territories.

AGCO service

During the warranty period, all maintenance and repair work must be carried out by the AGCO dealer who will carefully carry out detailed checks of the progress and performance of the new combine.

To obtain best results from an AGCO combine, it is important to continue regular servicing and periodical inspection after the warranty has expired. All major overhaul work on the combine must be carried out by a local AGCO dealer; an experienced technician will detect any problems which may arise between two overhauls.

Mechanical staff regularly follow training courses to update their knowledge of the product, maintenance and repair techniques and the use of special modern tools and equipment for troubleshooting. They receive regular Service Bulletins and have access to all the workshop manuals and technical publications required to carry out repairs or maintenance meeting the quality standards required by AGCO.

Warning concerning spare parts

Parts other than original AGCO parts are likely to be of lower quality. AGCO disclaims all liability in the event of loss or damage arising as a result of such parts being fitted. The manufacturer's warranty may also become void, if such parts are fitted during the normal warranty period.

Warranty, pre-delivery check and installation

The Company, when selling new goods to its Distributors, gives a warranty which, subject to certain conditions, guarantees that the goods are free from defects in material and workmanship. The Company's Distributors and Dealers are required to give the benefit of a similar warranty to the first retail purchaser of all new goods supplied by the Company, and users should inquire of the Distributor or Dealer from whom they purchase as to the terms of the warranty made available to them.

Before delivering a new combine to the Customer's premises, it is the responsibility of the Distributor to conduct a pre-delivery check of the machine. This consists of a series of detailed inspections, adjustments and functional checks, which should ensure that when received by the Customer the combine is ready to start work immediately.

Upon delivery the Distributor is required to instruct the Customer in the basic principles and operating procedures of the combine. This is termed Combine Installation, which should include instruction on controls and instruments, field settings, maintenance requirements, safety precautions and winter storage, and should preferably be undertaken in the presence of all who will be concerned with the operation and maintenance of the machine.

This manual is published for World wide distribution, and the availability of equipment shown either as basic or accessory varies according to the territory in which the combine is to be used. Details of equipment available in your area can be obtained from your AGCO Distributor/Dealer.

1. General Information

1.3 Product Identification

Always quote combine model and serial number in any communication to your Distributor/Dealer.

Keep this manual safely for convenient reference.

Combine model: FENDT _____

Serial number: _____

Table serial number: _____

Engine type: _____

Serial number: _____

Owner's name: _____

Address: _____

Installation date: _____

Dealer's name: _____

Address: _____



Fig. 1



Fig. 2

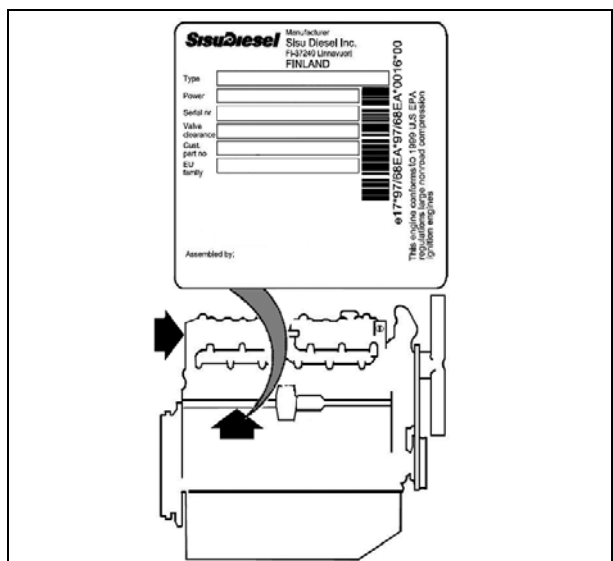


Fig. 3

1. General Information

1.4 Sectional Drawing and Parts Identification

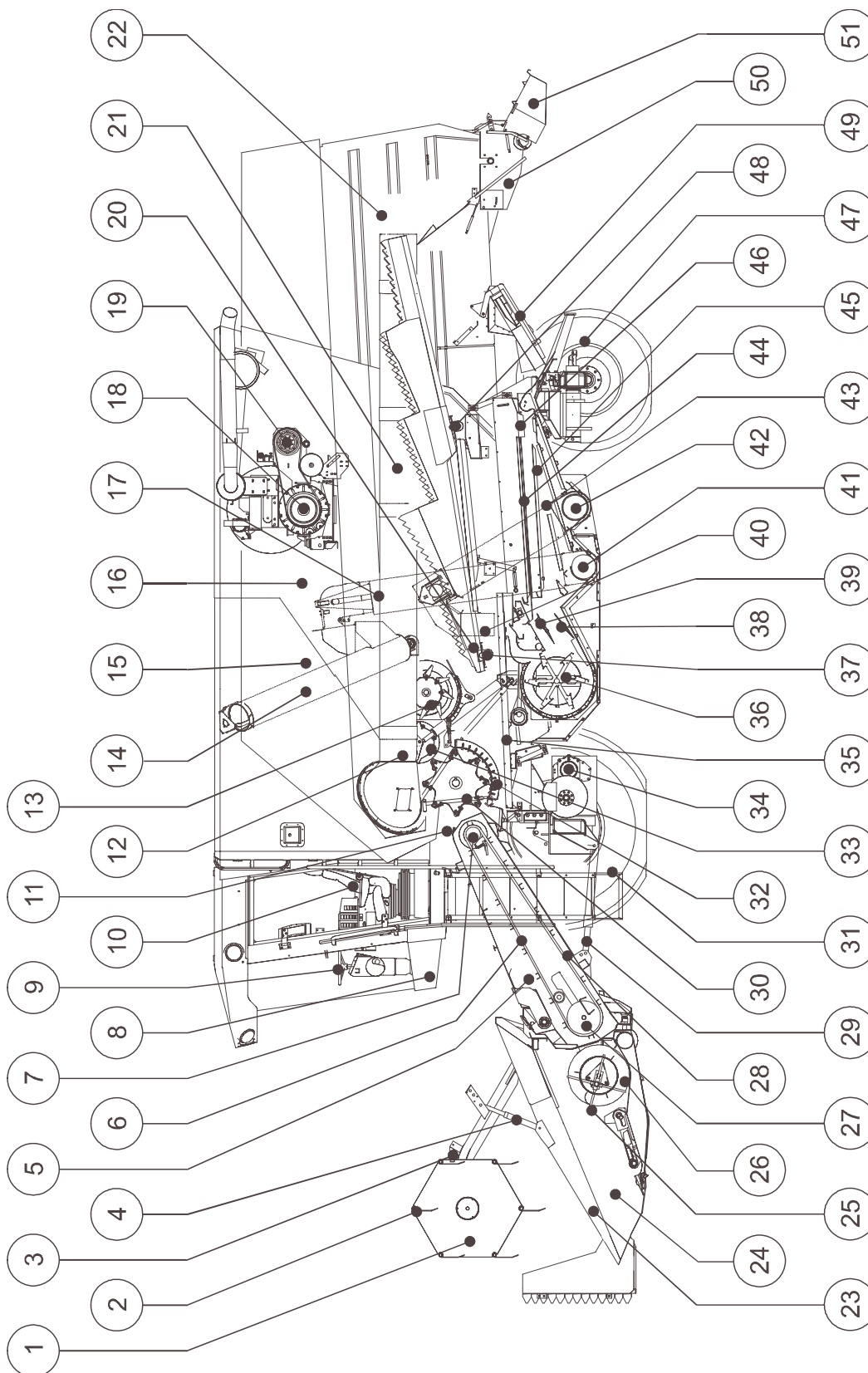


Fig. 4

1. General Information

Combine parts		
1. Reel	18. Engine	35. Main grain pan
2. Reel tine bars	19. Hydrostatic pump (transmission)	36. Fanning mill
3. Hydraulic ram for reel fore/aft	20. Straw walkers	37. Straw walker front crank
4. Hydraulic ram for reel up/down	21. Unloading tube	38. Bottom fan deflector
5. Main crop elevator	22. Straw hood	39. Top fan deflector
6. Crop elevator chain	23. Straw divider	40. Returns thresher
7. Elevator chain top shaft	24. Table	41. Good grain auger
8. Operator cab	25. Feathering fingers	42. Returns auger
9. Steering wheel	26. Table auger	43. Shaker shoe
10. Operator seat	27. Elevator chain front shaft	44. Top sieve
11. Cylinder access door	28. Elevator chain slats	45. Bottom sieve
12. Unloading auger/tube	29. Hydraulic table lift ram	46. Sieve extension
13. Rotary separator	30. Threshing cylinder	47. Rear wheels
14. Tank filling auger	31. Traction wheels	48. Straw walker rear crank
15. Grain tank	32. Concave	49. Chaff spreader
16. Rear beater curtain	33. Rear beater	50. Straw chopper
17. Tank filling elevator	34. Hydrostatic motor (transmission)	51. Spreader hood

Fig. 5

1. General Information

Contents

2.1	General Safety Precautions	18
2.2	Attention - Warning Symbols.....	19
2.3	Safety Precautions.....	20
2.4	Road Transport	22
2.5	CE Marking and Type Plate on the Combine.....	23
2.6	Warning/Instruction decals.....	34
2.7	Position of CE Markings and Type Plate	39

2. Safety

2.1 General Safety Precautions



Every effort has been made to ensure that FENDT combines provide maximum protection against personal injury through accidents. The effectiveness of guards and other safety devices is only as comprehensive as the operator allows in practising caution whenever the machine is running. Reading the simple rules below is only part of your responsibility. Memorise them and practise them until you are continually safety conscious. In order to provide a better view, certain photographs or illustrations in this manual may show an assembly with the safety shield removed. However, a machine should never be operated in this condition. Keep all shields in place. If a shield removal becomes necessary for repairs, replace the shield prior to machine operation.

Operators should familiarise themselves with the provisions of the Road Traffic Acts and of the regulations made thereunder in order to ensure that, when taking the combine and the attachments upon the road, they comply with the relevant statutory requirements. Always remember to observe the restrictions on the use of vehicles carrying projection loads or appliances.

The machine is delivered from the factory with guards and safety equipment as required by the authorities.

2.2 Attention - Warning Symbols

Read Operator's Manual and safety precautions thoroughly before starting! (Note decals on the machine!)

All persons using or involved with service or maintenance of this table should familiarise themselves with the safety precautions!

Provisions Concerning Safety and Prevention of Accidents

Before starting check the combine with a view to road safety and reliability.

Note this symbol in this operator's manual, it's for your own safety:



2. Safety

2.3 Safety Precautions



Attention! Become alert! Your safety is involved

Safety precautions are for your safety

1. In addition to the instructions stated in this operator's manual it is the responsibility of the user to observe general safety provisions and regulations for the prevention of accidents.
2. Warnings and instructions on the machine give important information as to safe use. They are for your own safety and must be closely observed.
3. In road transport it is the responsibility of the user to observe the current provisions concerning forward speed, total weight, axle load, transport dimensions, safety equipment, safety guards, warnings and lights.
4. Before starting the operator should familiarise himself thoroughly with the machine functions and their operation, not least for his own safety. It may be too late once the machine is at work!
5. Keep a safe distance from rotating parts. Never wear loose clothes when combining.
6. Keep the machine clean to avoid fire hazard.
7. Check the immediate surroundings before starting (children!). Be sure to have a clear view. Never start the machine until persons near the machine are aware of your intentions to start.
8. Never allow any passengers on the machine when driving.
9. Before starting the engine make sure the machine is in neutral and that all safety guards are fitted and secured.
10. Start the engine only from the operator seat. Never start by short-circuiting the electronic connections at the starter, as the machine may then start moving instantly.
11. Never let the engine run in a closed room.
12. Handle fuel with caution. Fire hazard. Smoking and open fire should be avoided when refuelling.
13. Always stop the engine and remove the ignition key before refuelling. Never refuel in a closed building. Remove spilled fuel immediately.
14. Handle brake fluid and battery acid with caution (noxious and caustic).
15. Never leave the operator platform on the move.
16. The forward speed must always be adapted to ground conditions. Avoid abrupt turns when driving up- or down-hill or across steep slopes.
17. The combine may be transported on roads only with an empty, closed grain tank.
18. Never leave the combine without securing it against rolling (hand brake/sprags under the wheels). Stop the engine, remove ignition key and main switch handle and lock the cab.
19. Never leave the combine unattended when the engine is running.
20. Before leaving the combine lower the table completely.
21. Never work on or under the table in raised position without securing it with all safety stops.
22. Be particularly cautious when mounting/dismounting the table and when attaching the table trailer.
23. As the function of table, maize header, table auger, elevator chain, knives, reel, etc. does not permit complete shielding, be sure to keep safe distance from these parts during test and work.
24. Make sure that the P.T.O. shaft is always properly fitted when the table is attached.
25. The straw chopper rotor will keep moving for some time after the chopper has been disengaged. Therefore keep safe distance until the chopper has stopped completely.
26. As the function of the grain tank augers does not permit complete shielding, always use suitable tools (rod or the like) to remove accumulated material in the grain tank.
27. Never enter the grain tank without stopping the engine and removing the ignition key from the switch, to prevent that the machine is started unintentionally.
28. Before any repair, maintenance, cleaning or correction of functional faults is carried out, stop the engine and disengage the threshing unit. **Remove the ignition key from the switch.**
29. Fluid under high pressure (fuel, hydraulic oil, etc.) spraying out may penetrate your skin and cause severe injury. In that case, see a doctor immediately. Risk of infection!
30. Before carrying out any service or repair on the hydraulic system, make sure the particular function is lowered/relieved (without pressure).
31. Repair of the hydraulic system to be carried out only by a specialist workshop.
32. Before carrying out any work on the electrical system, remove ignition key and main switch handle.
33. Before carrying out any electric welding on machine or table, dismantle the alternator cables and remove the main switch handle.
34. Always remove the radiator cap with greatest caution when the engine is warm. The radiator is under pressure and scalding hot water may splash out.
35. Dispose of oil, fuel and filters in a safe way.
36. Check braking before each start.
37. Check the brake system regularly and thoroughly.
38. Adjustment and repair of the brake system to be carried out only by specialist workshops or authorised brake specialists.
39. Fitting of tyres may be carried out only by specialists with special tools and sufficient knowledge of tyre fitting.

40. When working on tyres and wheels make sure that the machine stands firmly on the ground and is secured against rolling (sprags under the wheels).
41. Repair of tyres and wheels to be carried out only by specialists.
42. Check tyre pressure regularly. Observe prescribed tyre pressure.
43. Check bolts and nuts regularly and retighten if required.
44. Keep safe distance from low-hanging mains (be aware of the aerial, if any).
45. Repair and maintenance of the air-conditioning system to be carried out only by specialist workshops. Avoid smoking during repair and maintenance.
46. To avoid health/respiratory hazard to the operator it is recommended that accumulated debris is removed by vacuuming and supplemented use of effective respiratory protective equipment (UK: EN149:FFP2S or better).
47. In situations where cleaning by use of vacuuming is impossible and pressurised air or water is used alternatively, the operator should protect himself by using effective respiratory protective equipment in accordance with national regulations (UK: COSHH 1994).
48. Dismounted, defective combine parts, used oil and other fluids must be disposed of in accordance with current environmental regulations. When replacing machine components during the warranty period, observe the FENDT Warranty conditions.

2. Safety

2.4 Road Transport

It is the responsibility of the owner/user that cutting table and machine are fitted with the equipment required in the country and driven according to the regulations in force for road transport.

1. Safety guards, traffic lights, rotating beacon, reflectors, warning triangle must be fitted and in transport position.
2. Brake, steering gear, and other safety equipment must comply with the relevant statutory requirements.
3. Rules governing maximum width, length, height and total weight must be observed.
4. Rules governing driver's licence and insurance must be observed.
5. Table and table trailer must be attached and secured according to regulations.
6. In transport the forward speed of the machine must not exceed the speed limit prescribed by law, irrespective of the conditions.

Note: *To avoid accidents, all persons engaged in operation, maintenance, repair and testing of this machine should familiarise themselves with the recommendations and warnings in this operator's manual. The sections, **Safety Precautions** and **Before Start**, are particularly important.*

Please also note:

If the combine is equipped with maize header or other special header, the rules in force on the use and transport of such headers must be observed.

The use of spare parts, accessories and additional implements which are not genuine and not tested and approved by the manufacturer may cause changes in machine function and thus affect work and road safety (safety guards).

The manufacturer accepts no liability for any loss or damage which may result from the use of non-original parts, accessories or implements.

Technical specifications, dimensions and weights are without any obligation.

Right to change technical specifications and equipment reserved.

Front, rear, RH and LH are always seen in the travelling direction.

2.5 CE Marking and Type Plate on the Combine

See drawings at the end of this chapter.

IMPORTANT: Renew decals that have been damaged, lost, painted out or otherwise have become illegible. If components that originally held decals, are replaced make sure that new decals are mounted on the new components.

Note: New decals can be ordered from your dealer.

Type Plate 1, [\(Fig. 1\)](#)
Frame No./CE Marking

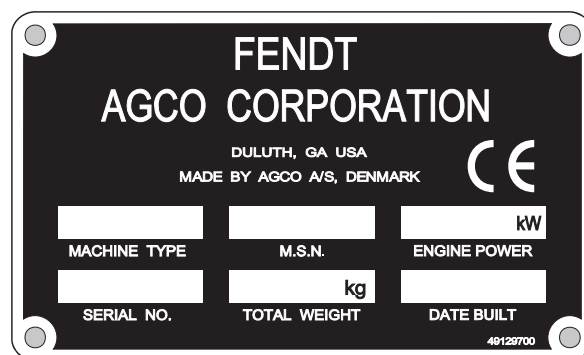


Fig. 1

Decal 2, [\(Fig. 2\)](#)

Carefully read the operator's manual before putting the combine into use. Observe instructions and safety precautions during work.

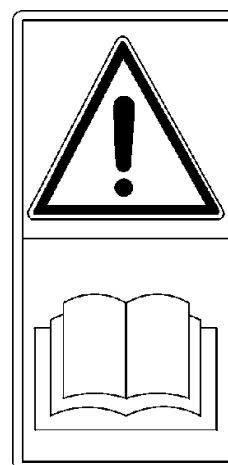


Fig. 2

2. Safety

Decal 3, (Fig. 3)

Shut off engine and remove ignition key before performing maintenance or repair work.

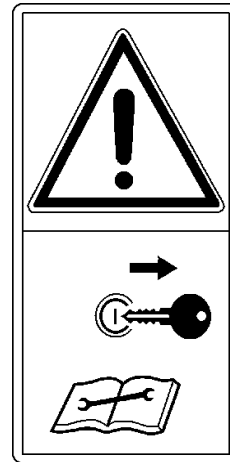


Fig. 3

Decal 4, (Fig. 4)

Sound the horn twice before starting the engine.

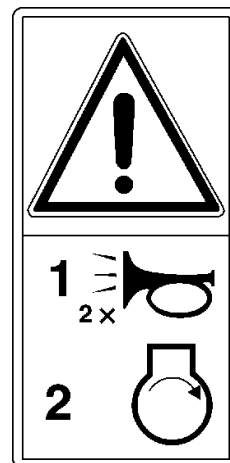


Fig. 4

Decal 5, (Fig. 5)

Do not ride on platform or ladder.



Fig. 5

2. Safety

Decal 6, (Fig. 6)

Avoid fluid escaping under pressure. Consult technical manuals for service procedures.

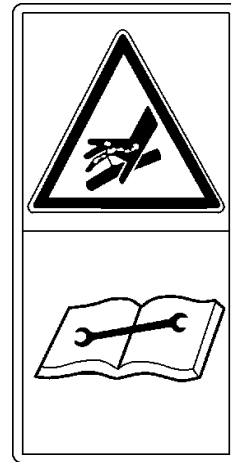


Fig. 6

Decal 7, (Fig. 7)

Never reach nor climb into grain tank while engine is running.



Fig. 7

Decal 8, (Fig. 8)

Do not open or remove safety shields while engine is running.

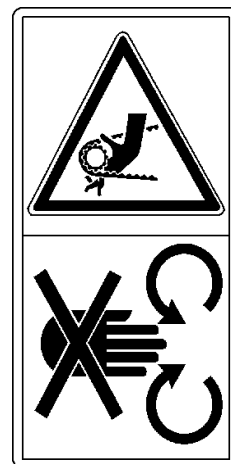


Fig. 8

2. Safety

Decal 9, (Fig. 9)

Danger - stay clear of rotating machine parts.

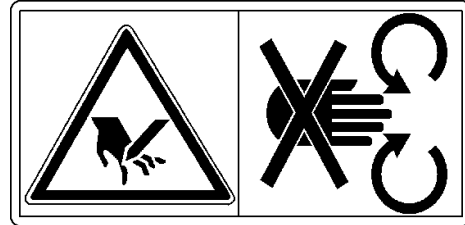


Fig. 9

Decal 10, (Fig. 10)

Stay clear of danger area between front attachment and engine.



Fig. 10

Decal 11, (Fig. 11)

Do not open or remove safety shields while engine is running.

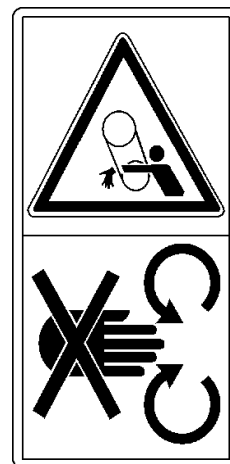


Fig. 11

2. Safety

Decal 12, (Fig. 12)

Danger - stay clear of rotating machine parts.

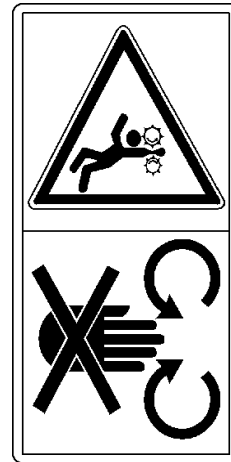


Fig. 12

Decal 13, (Fig. 13)

Secure the lifting rams with locking devices before getting in the dangerous area beneath table, main crop elevator or reel.



Fig. 13

Decal 14, (Fig. 14)

Never reach into rotating auger.

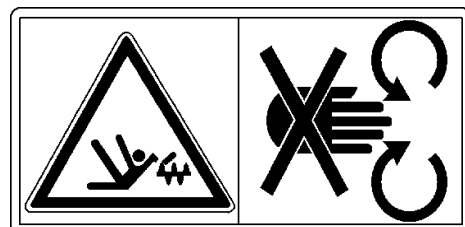


Fig. 14

2. Safety

Decal 15, (Fig. 15)

Wait until all machine components have stopped completely before touching them.

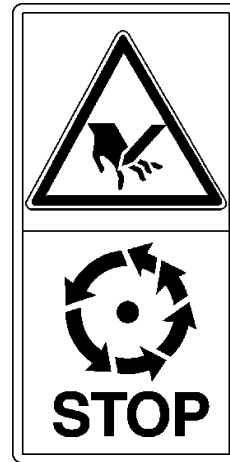


Fig. 15

Decal 16, (Fig. 16)

Stay clear of straw chopper while engine is running



Fig. 16

Decal 17, (Fig. 17)

Do not reach into straw walkers while engine is running.

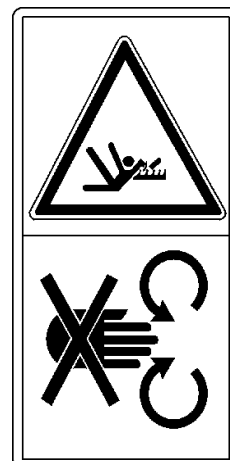


Fig. 17

This as a preview PDF file from best-manuals.com



Download full PDF manual at best-manuals.com