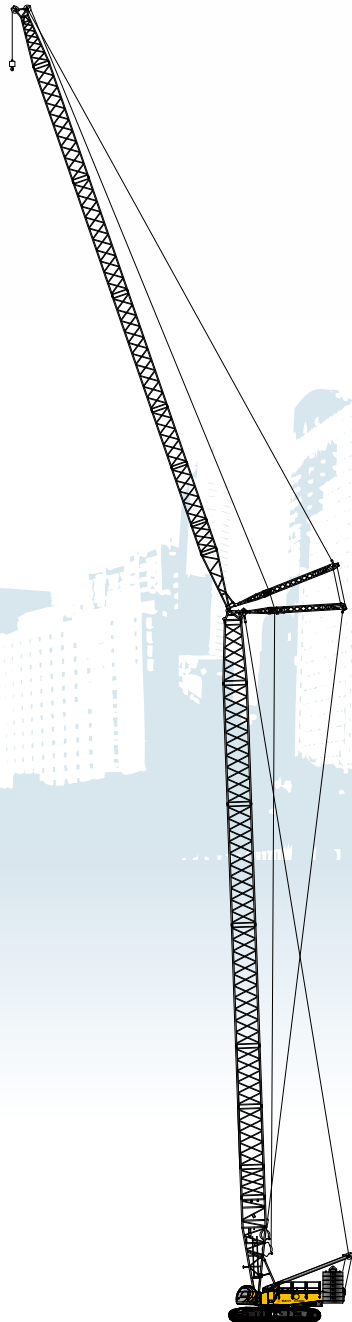




SANY

Quality Changes the World



SANY CRAWLER CRANE SCC 2600A

CRAWLER CRANE

CONTENTS

P2

SCC2600A Crawler Crane

- Outline Dimensions
- Main Technical Features
- Main Performance Data
- Transport Dimensions
- Transporting scheme
- Assembly and disassembly diagram

P16

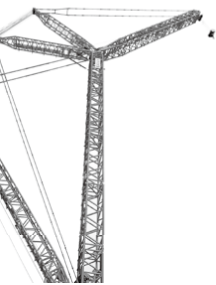
Specifications

- Superstructure
- Undercarriage
- Operation Devices
- Safety Devices

P23

Operating Condition Combination

- Operating Condition Combination
- H Operating Condition
- Fixed Jib Combination
- Luffing Jib Combination
- Shield Operating Condition Load Charts

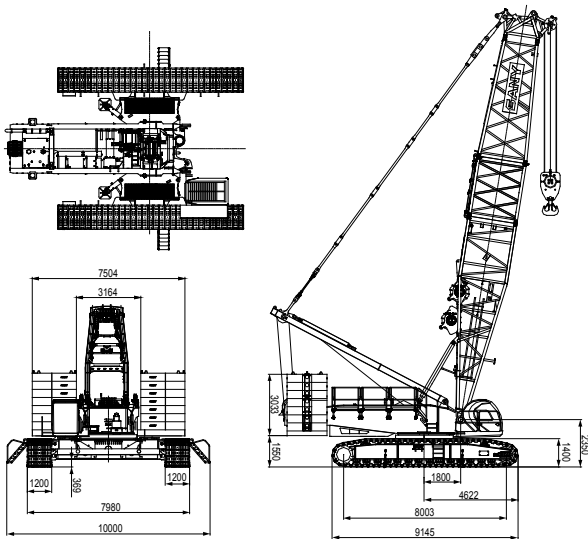


SCC2600A

02	Outline Dimensions
03	Main Technical Features
04	Main Performance Data
05	Transport Dimensions
10	Transporting scheme
12	Assembly and disassembly diagram



OUTLINE DIMENSIONS



MAIN TECHNICAL FEATURES

1. Safety Control System:

There are two convenient and reliable operation modes, working and assembly. The electronic level indicator and bubble level indicator are equipped to ensure dual protection for real-time display. It has the leaving-machine stop action, emergency electrical control, lightning protection, walking automatically steering and closed circuit monitoring functions, with the complete safety and monitoring system;

2. New Lift Operating Condition Design:

The operating condition of 20m boom + 12m heavy fixed jib is adopted, to meet the lifting requirement of shield machine used for subway construction and similar products. The turning-over operation of shield machine can be automatically done, without the auxiliary crane. The auxiliary hook is larger enough to lift the heavy object up to 96T. The load moment limiter indicator can dynamically reflect the loading capacities of main and auxiliary hooks;

3. Beautiful and Comfortable Cab:

The cab is beautiful, comfortable and safe;

4. Superior Operating Performance:

The load sensor, limit load regulation and electronic-over-hydraulic control can ensure the best all actions excellent action and stability;

5. Reliable Function Assurance:

The designed safety margin for structures and mechanisms are sufficient; and the control system can operate stably in the cold, high temperature, plateau, and large sand harsh environment;

6. Convenient Maintenance Technology:

It takes approximately no more than 10min/person to adjust no more than 30min/person for daily maintenance; no more than 2h/person to repair. GPS remote monitoring system is optional for maintenance and management;

7. Powerful Lifting Capacity:

The maximum boom lifting moment is $183.8t \times 8m = 1470.4t \cdot m$ and the longest boom length is 86m; the maximum lifting capacity of lifting jib is $62.5t \times 18m = 1125t \cdot m$ and the longest boom combination length is 62 m+63m;

8. High Efficient Self-Handling Technology:

A button can be cocked to easily lift the mast, to ensure the clutch traction winch reeving operation. It can support the machine self-dismounting operation; and the quick-change rope connectors and winch rope head are can be used;

9. Large Chassis Design:

The chassis with the track gauge of 6.7m is adopted, to ensure the excellent operation stability within the range of 360° rotation;

10. Globalization of Transportation Standards:

The transport weight of main machine is limited within 45 tons, the transport width is less than 3m and the transport height is less than 3.2m, thus saving the transport cost significantly;

11. Powerful Traveling Capacity with Load:

The powerful traveling traction and walking stability can make the best advantage of crawler crane;

12. Reliable Transmission System:

The use of advanced hydraulic components and of load feedback control technology with independent property rights can ensure the stable and reliable operation of hydraulic system;

13. Large Fuel Tank Design:

The fuel tank capacity is 1050L, which is greatly increased compared with the old models (400L), thus avoid the frequent refueling;

14. Broad Adaptability:

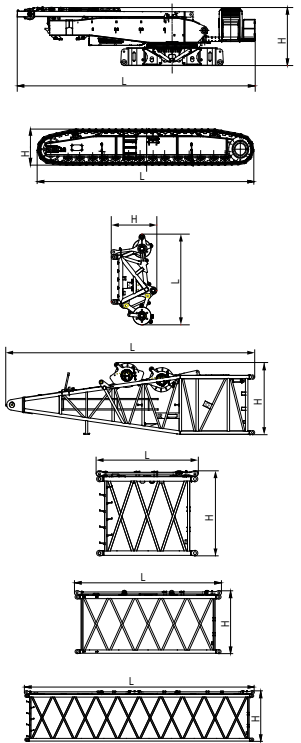
In accordance with Europe and America non-road phase III emission standards and has a wide application in boat building, subway construction, metallurgy and infrastructure.

MAIN PERFORMANCE DATA

Main Performance Parameters of SCC2600A Crawler Crane			
Performance Index		Unit	Parameters
Boom operating condition	Maximum lifting capacity	t	260
	Maximum rated lifting moment	t·m	1470.4
	Boom length	m	20~86
Fix jib operating jib	Boom luffing angle	°	30~85
	Longest boom + longest fixed jib	m	62+42
Heavy fixed jib operating condition	Fixed jib offset angle	°	10, 30
	Boom + fixed jib (shield operating condition)	m	20+12
Luffing jib operating condition	Angle between boom and jib	°	20
	Maximum lifting moment	t·m	62.5×18=1125
	Longest boom + longest luffing jib	m	62+63
Speed	Jib luffing angle	°	65~88
	Boom (jib) winch line speed (outmost working layer)	m/min	0~124
	Main luffing winch line speed (outmost working layer)	m/min	0~108
	Auxiliary luffing winch line speed (outmost working layer)	m/min	0~144
	Swing speed	rpm	0~1.25
	Traveling speed	km/h	0~1.2/0~0.53 (double speed)
Engine	Gradeability	%	30
	Output power	kW	242
Transportation data	Rated speed	rpm	2100
	Max. transport weight of single part (including boom and jib lifting winches)	t	45
	Transport dimension (L * W * H)	mm	13320×3000×3200
	Average ground pressure	MPa	0.14

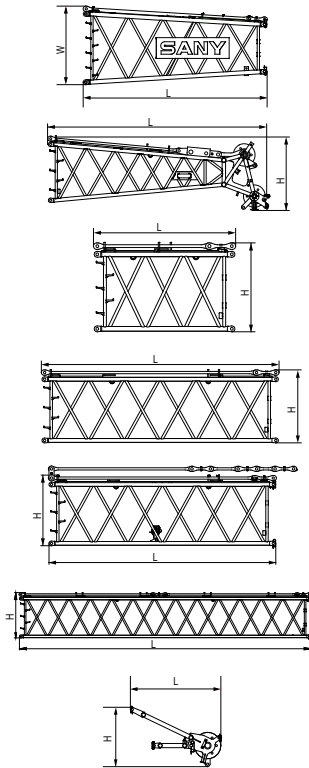
TRANSPORT DIMENSIONS

Basic Machine	×1
Length	13.32m
Width	3.0m
Height	3.20m
Weight	45t
Track Assembly	×2
Length	9.15m
Width	1.20m
Height	1.40m
Weight	22t
Boom Head (including pulley block)	×1
Length	3.24m
Width	2.07m
Height	1.62m
Weight	3.5t
Boom Base (including winch)	×1
Length	10.35m
Width	2.60m
Height	2.99m
Weight	13.58t
3m Boom Insert	×1
Length	3.18m
Width	2.65m
Height	2.66m
Weight	1.3t
6m Boom Insert	×1
Length	6.18m
Width	2.65m
Height	2.66m
Weight	2.0t
12m Boom Insert	×5
Length	12.18m
Width	2.65m
Height	2.66m
Weight	3.6t



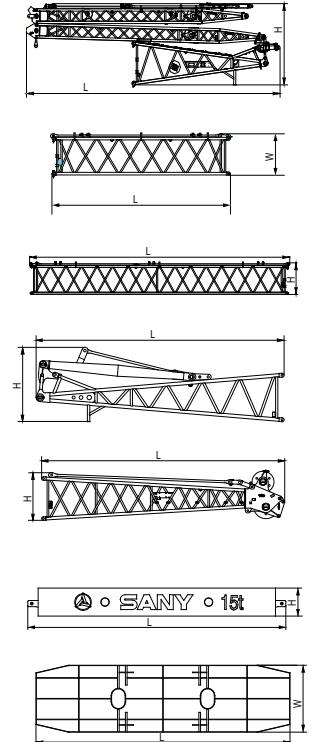
TRANSPORT DIMENSIONS

6m Transitional Boom Insert	×1
Length	6.20m
Width	2.65m
Height	2.66m
Weight	2.0t
Luffing Jib Tip	×1
Length	6.46m
Width	2.12m
Height	2.10m
Weight	2.4t
3m Luffing Jib Insert	×1
Length	3.17m
Width	2.12m
Height	1.91m
Weight	0.63t
6m Luffing Jib Insert	×1
Length	6.17m
Width	2.12m
Height	1.91m
Weight	1.04t
6m Luffing Jib Insert	×1
Length	6.17m
Width	2.12m
Height	1.91m
Weight	1.05t
12m Luffing Jib Insert	×3
Length	12.17m
Width	2.12m
Height	1.91m
Weight	1.95t
Boom Extension	×1
Length	2.2m
Width	0.95m
Height	1.44m
Weight	0.42t



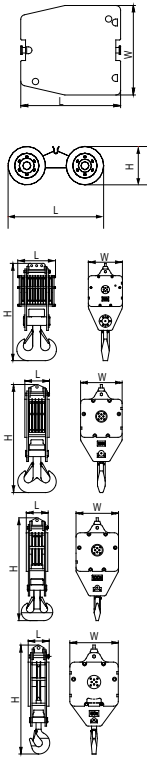
TRANSPORT DIMENSIONS

Jib Base, Luffing Front and Rear Masts	×1
Length	11.49m
Width	2.11m
Height	3.26m
Weight	5.5 t
6m Fixed Jib Insert	×1
Length	6.11m
Width	1.50m
Height	1.42m
Weight	0.75t
11.5m Fixed Jib Insert	×2
Length	11.67m
Width	1.50m
Height	1.42m
Weight	1.3 t
Fixed Jib Base and Mast	×1
Length	6.70m
Width	1.42m
Height	2.00m
Weight	1.75t
Fixed Jib Tip	×1
Length	7.10m
Width	1.42m
Height	1.43m
Weight	1.75t
Carbody Counterweight	×2
Length	5.48m
Width	1.72m
Height	0.60m
Weight	15t
Counterweight Tray	×2
Length	7.50m
Width	1.96m
Height	0.70m
Weight	16t



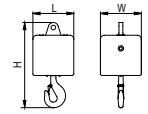
TRANSPORT DIMENSIONS

6t Counterweight Block	×14
Length	2.17m
Width	1.96m
Height	0.51m
Weight	6t
Dolly	×1
Length	2.56m
Width	1.74m
Height	1.00m
Weight	1t
260t Hook	×1
Length	1.04m
Width	1.02m
Height	2.93m
Weight	5.2t
160t Hook	×1
Length	0.59m
Width	1.02m
Height	2.64m
Weight	3.2t
100t Hook	×1
Length	0.51m
Width	1.02m
Height	2.48m
Weight	2.3t
50t Hook	×1
Length	0.45m
Width	1.02m
Height	2.30m
Weight	1.7t



TRANSPORT DIMENSIONS

16t Hook	×1
Length	0.53m
Width	0.57m
Height	1.10m
Weight	0.9 t



Notes: 1. The transport dimensions of the parts are marked on schematic diagrams, but not drawn by scale; the dimensions indicated are the design values excluding package.
2. The weight is the design value and there may be difference due to the manufacturing error.

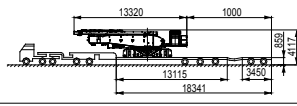
TRANSPORTING SCHEME

Platform lorry 498-16165 Rated load 49.8t

Transport part Basic crane

Transport weight 45t

Quantity 1

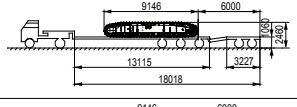


Platform lorry 395-16165 Rated load 39.5t

Transport part Left track frame assembly

Transport weight 22t

Quantity 1

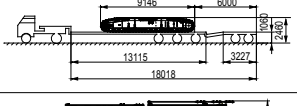


Platform lorry 395-16165 Rated load 39.5t

Transport part Right track frame assembly

Transport weight 22t

Quantity 1

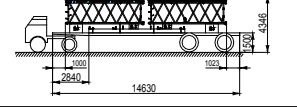


Platform lorry 20-14630 Rated load 20t

Transport part Counterweight tray × 1, 6m luffing jib intermediate section × 1 and 6m luffing jib intermediate section

Transport weight 17.7t

Quantity 1

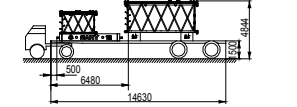


Platform lorry 20-14630 Rated load 20t

Transport part Central ballast frame × 1, 6m boom intermediate section × 1 and 3m luffing jib intermediate section × 1

Transport weight 18t

Quantity 1

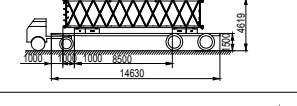


Platform lorry 20-14630 Rated load 20t

Transport part Transport part: Counterweight block × 2 and 12m boom intermediate section × 1

Transport weight 15.7t

Quantity 5

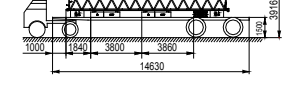


Platform lorry 20-14630 Rated load 20t

Transport part Counterweight block × 2, 12m luffing jib intermediate section × 1 and 50T hook × 1

Transport weight 15.2t

Quantity 1



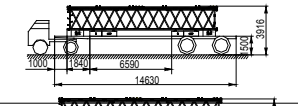
TRANSPORTING SCHEME

Platform lorry 20-14630 Rated load 20t

Transport part Basic crane

Transport weight 13.5t

Quantity 1

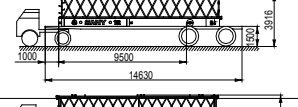


Platform lorry 20-14630 Rated load 20t

Transport part Central ballast frame × 1, 12m luffing jib intermediate section × 1 and 16T ball hook × 1

Transport weight 18t

Quantity 1

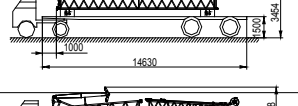


Platform lorry 20-14630 Rated load 20t

Transport part Fixed jib 11.5m and intermediate section × 1

Transport weight 1.3t

Quantity 2

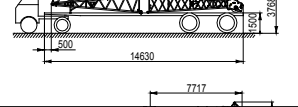


Platform lorry 20-14630 Rated load 20t

Transport part Fixed jib base and mast × 1, fixed jib top × 1

Transport weight 2.6t

Quantity 1

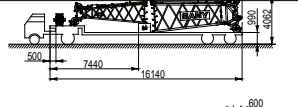


Platform lorry 20-14630 Rated load 20t

Transport part 160T hook × 1 and boom tapered insert × 1, Boom head (with pulley block) × 1 and luffing jib top × 1

Transport weight 13t

Quantity 1

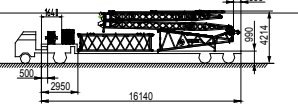


Platform lorry 20-16140 Rated load 20t

Transport part Luffing jib base and front and rear mast assembly × 1, 100T hook × 1, 200t hook × 1 and fixed jib 6m intermediate section × 1

Transport weight 13.5t

Quantity 1

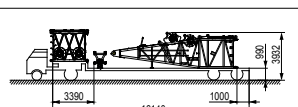


Platform lorry 20-16140 Rated load 20t

Transport part Boom base × 1, boom 3m intermediate section × 1, boom extension × 1 and dolly × 1

Transport weight 16.7t

Quantity 1

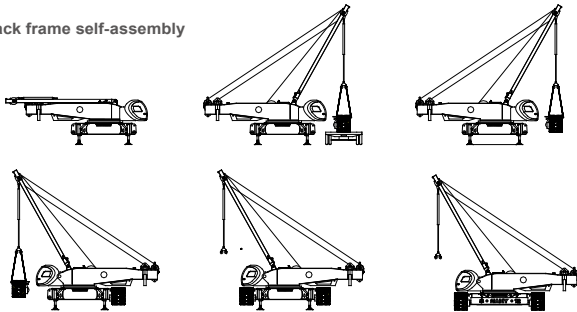


ASSEMBLY AND DISASSEMBLY DIAGRAM

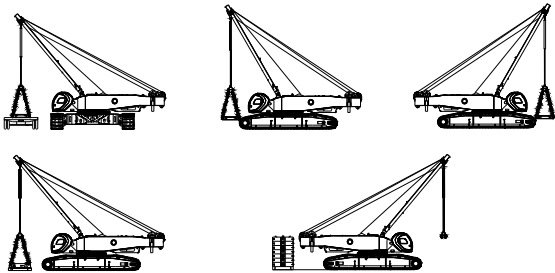
1) Basic crane self-assembly



2) Track frame self-assembly

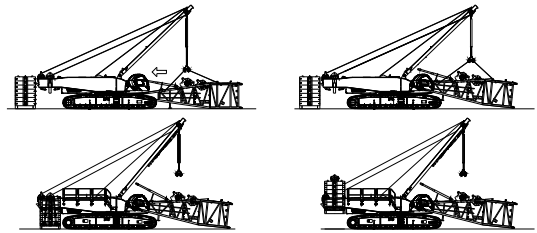


3) Counterweight self-assembly



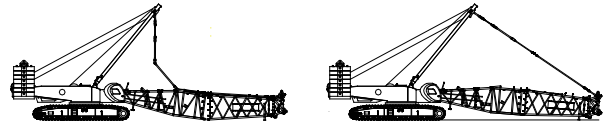
ASSEMBLY AND DISASSEMBLY DIAGRAM

4) Boom/jib base self-assembly

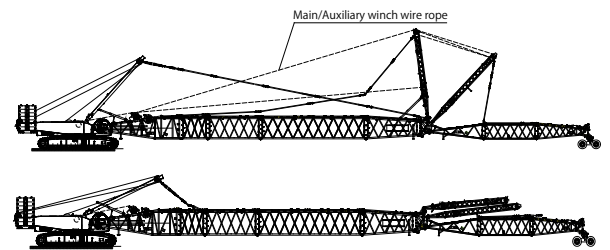


Boom frame installation diagram

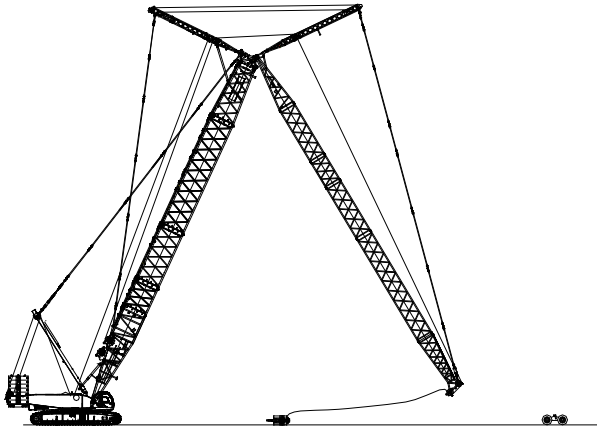
1) Basic boom installation



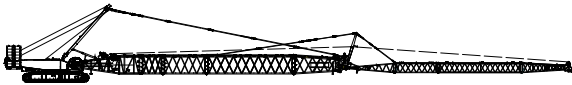
2) Jib frame installation under luffing jib operating condition



ASSEMBLY AND DISASSEMBLY DIAGRAM



3) Jib frame installation under fixed jib operating condition



SCC2600A

Superstructure	16
Undercarriage	18
Operation Devices	19
Safety Devices	20



SUPERSTRUCTURE

1) Engine

- Diesel engine with rated power of 242kw (324hp)/2100rpm and rated torque output 1424N·m/1500rpm.
- Emission standard: Tier III.

2) Electrical Control System

- Advanced central control unit, load moment indicator, display, sensor and closed-circuit monitoring system are adopted.
- Reliability: Advanced main electrical devices are adopted to ensure the stable operation in the cold, high temperature, plateau and large sand storm harsh environment.
- Security: Electrical design fully complies with the CE standard; the multi-level safety limit control is adopted and all safety signal indicators are complete.
- Comfortableness: The electrical parameters of all points can be seen through the combination instruments in the cab, to monitor all operating parameter and working state in real time.
- Advancement: The vehicle electrical system adopts the CAN bus system; the load power limit load control is adopted, with the calibration of redundant communications and with the optional GPS.

3) Hydraulic System

- The hydraulic system includes: Main valve hydraulic system, main lifting hydraulic structure, boom luffing hydraulic structure, jib luffing hydraulic structure, and auxiliary hydraulic structure.
- Features: The main system is of open circuit, widely adopting the electronic proportional control components. The system adopts the load sensitive LUDV system, which can achieve the flow distribution irrelevant with load. The hydraulic proportional pilot control is adopted, which is characterized by the sensitive operation and good micro-mobility.
- The system pressure is 32MPa.

4) Main and Auxiliary Hoisting Devices

- The boom and jib winch mechanisms can be driven separately, which is characterized by the compact structure, easy installation, and low wear. The maintenance-free built-in wet brake can ensure the safety of winch.
- The displacement of variable hydraulic motor of lifting mechanism can be automatically adjusted according to the load, to achieve the maximum winch speed.
- The high-quality anti-rotation wire rope is adopted, to ensure the high lifting safety and long life.
- The pouch socket with swaged sleeve is adopted to ensure the convenient and quick dismounting of wire rope.

NO.1 Main lifting device

Outermost working layer rope speed	0~110 m/min
Diameter of wire rope	28 mm
Length of wire rope of boom winch	480m
Rated single line pull	17t

NO.2 Auxiliary lifting device

Outermost working layer rope speed	0~110 m/min
Diameter of wire rope	28 mm
Length of wire rope of boom winch	390m
Rated single line pull	17t

5) Boom Luffing Device

The boom luffing drum is equipped with the ratchet pawl locking device, to ensure the parking safety of boom under non-working state.

NO.3 Boom luffing device

Outermost working layer rope speed	0~121m/min
Diameter of wire rope	28mm
Length of boom luffing wire rope	310m
Rated single line pull	17t

6) Jib luffing Device

The jib luffing drum is equipped with the ratchet pawl locking device, to ensure the parking safety of jib under non-working state.

NO.4 Jib luffing device

Outermost working layer rope speed	0~72m/min
Diameter of wire rope	20mm
Length of jib luffing wire rope	410m
Rated single line pull	8t

7) Swing Mechanism

- It adopts the three-row roller slewing ring and is driven by the large-displacement single motor reducer, with the slewing speed of 0-1.1r/min; it has the median free slipping function, with 360° rotation provided. When the handle is at middle position and there is no slewing speed, the brake is at the closed position and the slewing is at the locking state through the locking device. If the traveling or transportation is done with load, the upper rotary impact should be prevented.

8) Counterweight

- Carbody counterweight: 2, total weight: 30t (15t × 2)
- Rear counterweight: 6t counterweight block, with a total of 14; a counterweight tray of 16t, with a total of 100t.

9) Cab

- The full-enclosed and wide-vision cab having a smooth shape and the Sany unique style is adopted, with the tempered glass equipped at front and sides. The GE structural sheet material is adopted at the top, which is characterized by a good transparency, high strength and high wear resistance; the indoor noise is low (less than 85dB). Air-conditioning, control devices, instrumentation, fire alarms and closed circuit monitoring system are installed indoors, in accordance with the ergonomic design.
- The cab can pitching 25 degrees upwards, expanding the vision of driver's operation, improving the operational safety, with the transport width reduced due to its rotatable characteristics.

10) Control Operation

- The track traveling operation can be controlled through the handle or the traveling pedal, having the control automatically forward direction function. With the function of automatic change of the direction of steering, no matter the superstructure rotates to no matter the superstructure rotates to any direction, the forward direction refers to the operator's forward direction.
- The boom winch, jib winch, luffing and rotary actions can be controlled by switching the handle function.
- There are all operation buttons and control switches as well as the air conditioning control panel on the left and right armrest box, to achieve the different control function.

11) Alarm Display

All alarm information, including the wind speed, water temperature, oil temperature, oil level, oil pressure, working hours time and engine rotation errors, can be shown on the display in the cab, while giving the audible and visual alarm.

UNDERCARRIAGE

1) Traveling Drive

Each track part has an independent travel drive device. The traveling motor drives the machine to achieve independent traveling and turning through drive wheel and planetary gear reducer if travelling motor.

2) Traveling Brake

The travelling brake is a normally closed, built-in brake with automatic compensation function. When the control pedal valve is pressed down, the brake will be released to achieve travelling operation.

3) Track Shoe

The track shoe is made of high-strength and high wear-resistance material, with its tension regulated by the hydraulic jacks after installation. The ideal tension can be achieved through adjusting the position of gaskets.

OPERATION DEVICES

1) Boom

- The main chord pipe is made of high-strength material. And the boom frame is of lattice the space truss structure with the constant cross section at middle of boom and with the variable cross-section at two ends.
- Factory standard sections include: Boom base 10m, transition insert 6m, boom head 1m, intermediate section 3m×1, intermediate section 6m×1 and intermediate section 12m×5.
- The boom length can be variable between the basic boom (20m) and longest length (86m), which is increased by 3m.
- The 2.0m boom extension can be installed not only on the boom head but also on the luffing jib head.

2) Fixed Jib

- The main chord pipe is made of high-strength material. And the boom frame is of lattice the space truss structure with the constant cross section at middle of boom and with the variable cross-section at two ends.
- Jib top 6.5m, jib base 6.5m, intermediate section 6m × 1 and 11.5 m × 2; the usable fixed jib length includes 13m, 19m, 24.5m, 30.5m, 36m and 42m and the fixed jib can be mounted on the boom of the length of 29-62m.

3) Luffing Jib

- The main chord pipe is made of high-strength material. And the boom frame is of lattice the space truss structure with the constant cross section at middle of boom and with the variable cross-section at two ends.
- Jib top 6m, jib base 6m, intermediate section 3m × 1, 6m×2 and 12m × 3; the usable fixed jib length includes 21m, 24m, 27m, 30m, 33m, 36m, 39m, 42m, 45m, 48m, 51m, 54m, 57m, 60m and 63m the luffing jib can be mounted on the boom of the length of 26-62m.

4) Hook Block

- 16t hook
- 50t hook
- 100t hook
- 160t hook
- 260t hook

SAFETY DEVICES

1) Load moment Indicator

- The SCC2600A-type load moment indicator is a overload protection system specially designed for the Sany SCC series boom crawler crane, with the performance structure parameters of all Sany series crawler cranes stored directly in it, such as load curve, boom weight, center of gravity and other geometric parameters. The moment calculation adopts the targeted optimized model with tailor-made advantage, integrating Sany's technology accumulated over years in the area of crawler crane. It ensures lifting safety, maximizes the utilization efficiency by avoiding technology disjunction and after-sale service difficulties caused by different manufacturers of the crane and LMI, so as to enhance quality of the whole machine.
- As an independent safety control system completely controlled by a computer, the load moment limiter can automatically detect the load weight, working radius and lifting boom angle, and compare them with the rated load capacity and actual load, rated working radius and rated boom angle. Under normal operating condition, it can intelligently judge and automatically cut off the crane moving towards danger direction. It is also equipped with black box to record the overloading information.
- Its main components include display, controller, angle sensor and force sensor.

2) Three-color Load Alarm Light

Its corresponding moment limiter display can show the load progress bar state, reflecting the safety status of lifting load.

3) Main and Auxiliary Hoisting Limiter

When the lifting hook is raised to the height limit, it can send produce the alarm message and while cut off the lifting action of hook.

4) Lowering Limiter of Main and Auxiliary Winch

When the wire rope releases to the last three loops, it can send produce the alarm message, so the electrical control system can automatically cut off the lowering action.

5) Switch between Assembly/Operation Mode

In assembly mode, over hoisting limiter, boom angle limiter and load moment indicator will be bypassed for the assembly of the crane. In operation mode, all safety limit devices will function.

6) Lifting Boom Limit Detection Device

Under different operating conditions, through the detection of the limit switch and the boom angle signal of force limiter system, the crane boom or jib can operate within the safety angle.

7) Lifting Boom Back-stop Device

- The boom adopts the cylinder back-stop structure, with the larger compression and amount, the greater back-stop force. The maximum output force of back-stop cylinder is 38t.
- There is a pair of mechanical back-stop device on the rear mast of luffing jib, to prevent the mast overturn roll backward and to tension the rear mast pendant bar.
- If the angle between jib and boom is too small, the cylinder back-stop device can prevent it overturn roll backward, with the maxim output force of back-stop cylinder of 50t.

8) Winch Brake

All winch brakes adopt the spring-loaded normally closed disc brakes, which are characterized by the larger braking force, free maintenance, safe and reliable operation and long service life.

9) Monitoring System

With the high-definition camera adopted, the operator in the cab can monitor the real-time states of luffing drum, lifting winch drum and vehicle rear through the monitor.

10) Self-diagnosis System

It can automatically give the fault alarm message, and check the work powered state of electrical circuit, to quickly eliminate the electrical fault.

11) Phraos

It is mounted on the top of boom, to give the boom altitude lighting, so the boom lowering at night is not needed.

12) Anemometer

It is installed at the top of boom, to measure the wind speed in real time, and to transfer the data to the monitor display in the cab.

13) Level Gauge

The bubble level gauge is adopted as the validation basis and the electrical level indicator is adopted to give the high-precision display in real time, showing the crane tilting angle and informing the crane safety working ground environment.

14) Hook Latch Device

There are baffle on the hook to prevent the wire rope fall off.

15) Operating Alarm

Before any operation, press the horn to give an alarm, informing the crane will start work operation done now and other staff to pay attention to danger.

16) Traveling or Swing Alarm Message

In traveling or slewing operation, the working alarm lamps flashes, accompanied by a buzzer sound.

17) Function Lock

If the operator leaves the seat or the function locking handle is not at the proper position, all other functional control handles will not be working so as to are invalid, thus effectively avoiding misuse.

18) Automatic Reverse Traveling

No matter what the relative position of superstructure and chassis is pulled forwarded, the vehicle will travel forward; if pulled backwards, the vehicle will travel backward.

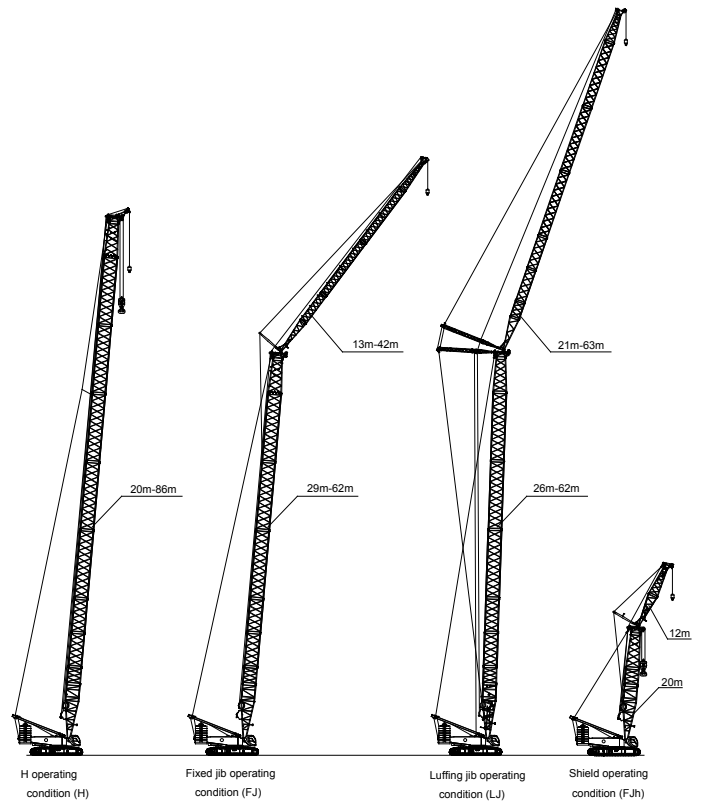
19) Monitor Display

The high-precision true color display with that is the vehicle electrical man-machine dialogue display terminal can show the working state and real-time parameters of engine system, hydraulic system and electrical system.

SCC2600A

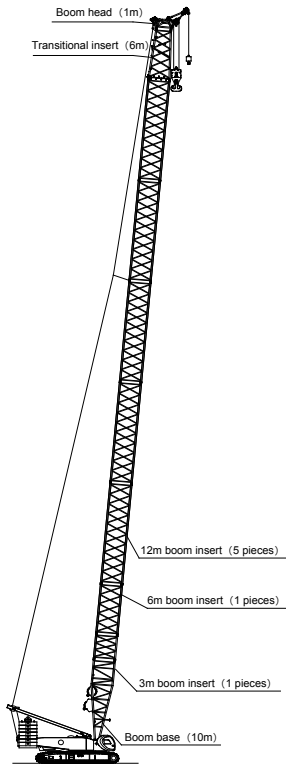
23	Operating Condition Combination
24	H Operating Condition
28	Fixed Jib Combination
38	Luffing Jib Combination
56	Shield Operating Condition Load Charts

OPERATING CONDITION COMBINATION

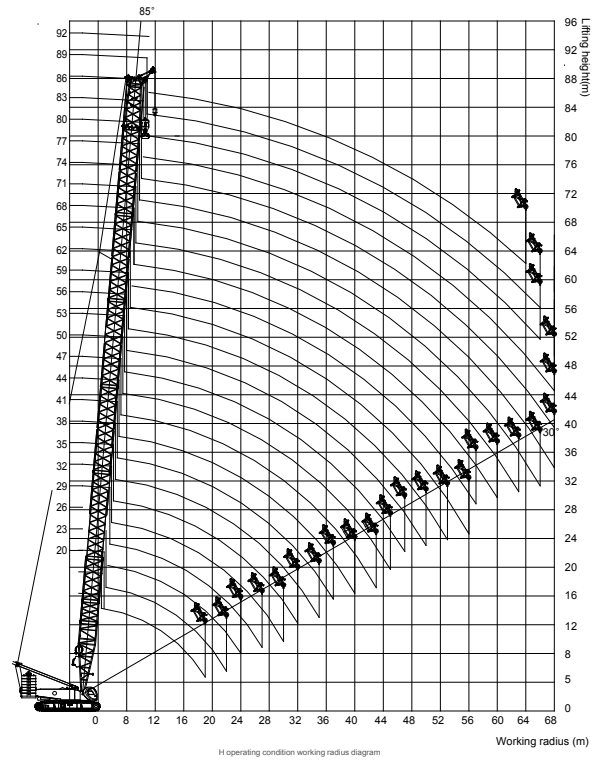


H OPERATING CONDITION

Boom length m	Insert		
	3 m	6 m	12m
20	1	-	-
23	-	1	-
26	1	1	-
29	-	-	-1
32	1	-	1
35	-	1	1
38	1	1	1
41	-	-	2
44	1	-	2
47	-	1	2
50	1	1	2
53	-	-	3
56	1	-	3
59	-	1	3
62	1	1	3
65	-	-	4
68	1	-	4
71	-	1	4
74	1	1	4
77	-	-	5
80	1	-	5
83	-	1	5
86	1	1	5



H OPERATING CONDITION



H OPERATING CONDITION LOAD CHARTS

SCC2600A Crawler Crane – H Operating Condition Load Charts

Boom length 20-86m		Rear counterweight 100t										Carbody counterweight 30t										Unit: (t)						
Boom length (m)	Radius(m)	20	23	26	29	32	35	38	41	44	47	50	53	Boom length (m)	Radius(m)	56	59	62	65	68	71	74	77	80	83	86	Boom length (m)	Radius(m)
5	260.0													5												5		
6	238.4	224.9	223.6	204.2	194.0									6													6	
7	207.9	207.6	202.2	191.4	174.4	169.1	165.0	158.0						7													7	
8	183.8	178.3	174.4	170.6	166.3	157.9	156.5	141.8	126.3	125.0	124.0	122.0		8													8	
9	156.1	153.4	149.4	145.4	142.7	142.7	141.3	130.2	122.1	117.6	115.0	113.0		9													9	
10	141.2	137.8	135.7	132.2	130.1	129.2	128.0	125.8	115.5	115.5	107.1	104.9		10													10	
12	110.1	108.2	107.7	107.4	107.1	107.7	105.5	102.4	102.4	100.0	97.8	95.8		12													12	
14	89.6	88.8	88.1	87.7	87.2	87.2	86.9	86.8	85.8	84.2	82.4	80.9		14													14	
16	74.6	74.2	73.8	73.5	72.8	72.6	73.8	72.3	72.3	72.3	70.8	69.5		16													16	
18	63.8	63.3	62.8	62.5	62.5	62.6	62.0	62.3	61.6	61.5	61.7	60.7		18													18	
20	60.7	55.1	54.7	54.4	54.3	54.6	54.5	54.3	54.2	54.1	53.8	53.5		20													20	
22		49.5	48.8	48.3	48.2	48.2	48.1	48.0	47.8	47.7	47.5	47.6		22													22	
24			43.8	43.5	43.1	43.0	42.8	42.7	42.6	42.5	42.3	42.7		24													24	
26				39.1	39.0	39.1	38.9	38.9	38.0	38.3	38.2	38.1		26													26	
28					37.0	35.0	35.1	34.9	34.8	34.5	34.5	34.2	34.0		28												28	
30						31.4	31.6	31.4	31.3	31.1	31.0	30.7	30.5		30												30	
32							28.6	28.4	28.3	28.1	28.0	27.7	27.5		32												32	
34								25.8	25.7	25.5	25.4	25.1	24.9		34												34	
36									24.6	23.4	23.4	23.1	22.8	22.7		36											36	
38										22.3	21.7	22.0	20.8	20.6		38											38	
40											20.0	20.2	19.5	19.2		40											40	
42												17.8	17.7	17.6		42											42	
44													16.9	16.8	16.5		44										44	
46														16.5	15.2		46										46	

Notes: 1. The actual weight is a value that the rated weight in this table is subtracted by the weights of the hooks, hangers, and wire ropes winding on the hooks and on the boom head.
 2. The rated load in this table is measured under the condition that the heavy object is lifted slowly and stably from the level and hard soil ground.

H OPERATING CONDITION LOAD CHARTS

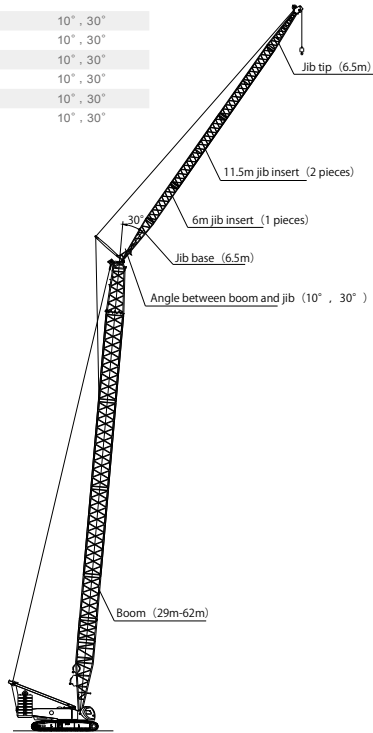
SCC2600A Crawler Crane – H Operating Condition Load Charts

Boom length 20-86m		Rear counterweight 100t										Carbody counterweight 30t										Unit: (t)						
Boom length (m)	Radius(m)	56	59	62	65	68	71	74	77	80	83	86	Boom length (m)	Radius(m)	88	91	94	97	100	103	106	109	112	115	118	121	Boom length (m)	Radius(m)
8													8												8			
9		114.0	114.0	98.9	98.9								9													9		
10		92.0	90.0	90.0	90.0	89.0	83.3	83.3	83.3				10													10		
12		91.0	87.2	85.6	76.3	72.8	67.0	63.7	60.4	60.0	59.0	59.0	12													12		
14		79.1	77.7	74.9	73.1	71.8	65.1	60.3	54.9	51.8	51.2	50.0	14													14		
16		68.1	67.0	65.6	64.4	63.0	62.0	54.8	52.1	48.2	47.5	46.0	16													16		
18		58.4	58.5	57.3	56.2	55.1	54.2	53.0	47.4	45.5	44.9	39.0	18													18		
20		52.4	51.6	50.5	49.6	48.6	47.8	46.8	45.9	42.9	39.4	35.9	20													20		
22		46.6	45.9	44.9	44.1	43.2	42.5	41.5	40.8	39.8	36.6	32.1	22													22		
24		41.8	41.1	40.2	39.5	38.6	38.0	37.1	36.4	35.6	35.0	31.1	24													24		
26		37.6	37.1	36.2	35.6	34.7	34.2	33.4	32.7	31.9	31.4	28.7	26													26		
28		33.7	33.6	32.8	32.1	31.4	30.9	30.1	29.5	28.7	28.2	27.4	28													28		
30		30.2	30.1	29.8	29.2	28.4	28.0	27.2	26.6	25.9	25.4	24.7	30													30		
32		27.2	27.1	26.8	26.5	25.8	25.4	24.7	24.1	23.4	23.0	22.3	32													32		
34		24.6	24.5	24.2	24.0	23.5	23.1	22.4	21.9	21.2	20.8	20.1	34													34		
36		22.3	22.2	21.9	21.7	21.3	21.1	20.4	19.9	19.2	18.8	18.2	36													36		
38		20.3	20.2	19.8	19.6	19.3	19.1	18.6	18.1	17.4	17.1	16.4	38													38		
40		19.0	18.4	18.2	17.8	17.4	17.3	16.9	16.5	15.8	15.5	14.8	40													40		
42		17.5	17.1	16.9	16.3	16.0	15.7	15.3	15.0	14.3	14.0	13.4	42													42		
44		16.2	15.9	15.5	14.9	14.7	14.5	13.8	13.6	13.0	12.7	12.1	44													44		
46		15.0	14.5	14.0	13.7	13.4	13.2	12.5	12.3	11.8	11.5	10.8	46													46		
48		13.4	13.5	13.1	12.6	12.5	12.3	11.3	11.1	10.6	10.3	9.7	48													48		
50		12.5	12.5	12.0	11.7	11.5	11.2	10.2	9.9	9.6	9.3	8.7	50													50		
52		11.5	11.0	10.5	10.3	10.0	9.2	8.9	8.5	8.3	7.7	7.2	52													52		
54				10.2	10.0	9.5	8.8	8.2	8.0	7.6	7.4	6.8	54													54		
56					9.0	8.8	8.7	7.3	7.1	6.7	6.6	6.0	56													56		
58						7.9	7.8	6.5	6.3	5.9	5.8	5.2	58													58		
60							7.0	5.8	5.5	5.1	5.0	4.5	60													60		
62								6.0	5.0	4.8	4.4	3.8	62													62		
64									5.4	4.4	4.1	3.8	3.1	64												64		
66										3.7	3.5	3.1	3.0	2.5	66											66		
68											2.9	2.5	2.4	68												68		

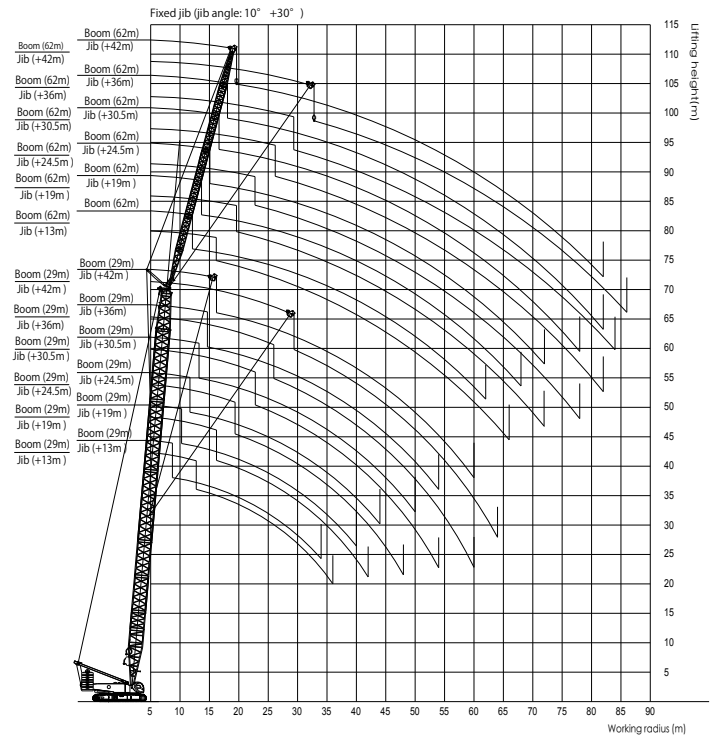
Notes: 1. The actual weight is a value that the rated weight in this table is subtracted by the weights of the hooks, hangers, and wire ropes winding on the hooks and on the boom head.
 2. The rated load in this table is measured under the condition that the heavy object is lifted slowly and stably from the level and hard soil ground.

FIXED JIB COMBINATION

Jib length (m)	Insert		Boom length (m)	Angle between boom and jib
	6 m	11.5 m		
13	-	-	29~62	10°, 30°
19	1	-	29~62	10°, 30°
24.5	-	1	29~62	10°, 30°
30.5	1	1	29~62	10°, 30°
36	-	2	29~62	10°, 30°
42	1	2	29~62	10°, 30°



FIXED JIB WORKING RANGE DIAGRAM



FIXED JIB LOAD CHARTS

SCC2600A Fixed Jib Load Charts (Without Jib Head Pulley Block)

Without main hook; jib angle: 10°

Boom length (m)		29						35						Unit: (t)	
Jib length (m) Radius(m)	13	19	24.5	30.5	36	42	13	19	24.5	30.5	36	42	Jib length (m) Radius(m)	9	
9	64.4						64.4						9	9	
10	64.4						62.7	54.2					10	10	
12	59.3	52.9					56.6	51.5	45.2				12	12	
14	53.1	49.7	44.4	34.7			51.4	47.3	41.6	32.8	24.1		14	14	
16	47.9	44.7	38.9	31.9	24.5		47.1	43.2	36.5	29.9	23.4	17.2	16	16	
18	43.7	40.6	34.1	28.1	23.7	17.4	43.2	39.5	32.6	26.8	22.7	16.7	18	18	
20	40.1	37.2	30.4	25.0	21.8	16.8	40.1	36.9	30.8	24.2	20.9	16.1	20	20	
22	37.1	34.4	27.5	22.7	19.7	16.2	37.1	34.0	28.1	22.1	19.0	15.6	22	22	
24	34.1	31.8	24.9	20.5	17.9	15.7	34.1	30.8	24.8	20.1	17.5	15.2	24	24	
26	30.5	29.3	22.9	18.8	16.3	14.4	30.5	27.6	23.0	18.7	16.1	14.0	26	26	
28	29.2	28.9	20.9	17.3	15.1	13.2	29.2	26.9	22.3	18.2	15.7	13.5	28	28	
30	28.0	25.0	19.4	16.0	13.9	12.2	28.0	25.0	21.4	17.3	14.9	13.0	30	30	
32	26.9	23.0	18.1	14.9	12.8	11.3	26.9	23.0	19.9	16.1	14.0	11.9	32	32	
34	24.5	22.5	17.0	13.9	12.0	10.5	24.5	22.1	18.6	15.1	12.9	11.1	34	34	
36		21.8	16.7	13.1	11.8	9.8	23.3	21.4	17.4	14.2	12.1	10.4	36	36	
38		20.1	16.2	12.2	11.6	9.7	21.3	19.6	16.4	13.3	11.4	9.8	38	38	
40		18.5	15.8	11.5	11.1	9.1	19.5	18.1	15.5	12.6	10.7	9.2	40	40	
42			15.0	11.3	10.5	9.0	18.7	15.4	11.9	10.5	9.0	7.5	42	42	
44			14.3	10.7	9.9	8.5	15.4	14.5	11.3	10.2	8.5	7.0	44	44	
46				10.3	9.4	8.0		13.5	10.7	9.7	8.0	6.5	46	46	
48				9.8	8.9	7.7		12.6	10.2	9.1	7.6	6.0	48	48	
50				9.4	8.4	7.1		11.6	9.7	8.7	7.2	5.5	50	50	
52				8.0	6.8			9.3	8.4	6.8	5.2	4.5	52	52	
54					6.8	6.5			8.9	7.9	6.5	4.0	54	54	
56						6.1				7.5	6.2	3.5	56	56	
58						5.9				7.2	5.9	3.0	58	58	
60						5.5				7.0	5.6	2.5	60	60	
62											5.4	2.0	62	62	
64												5.1	64	64	

Notes: 1. The actual weight is a value that the rated weight in this table is subtracted by the weights of the hooks, hangers, and wire ropes winding on the hooks and on the boom head.
2. The rated load in this table is measured under the condition that the heavy object is lifted slowly and stably from the level and hard soil ground.

FIXED JIB LOAD CHARTS

SCC2600A Fixed Jib Load Charts (Without Jib Head Pulley Block)

Without main hook; jib angle: 10°

Boom length (m)		41						47						Unit: (t)		
Jib length (m) Radius(m)	13	19	24.5	30.5	36	42	13	19	24.5	30.5	36	42	Jib length (m) Radius(m)	10		
10													10	10		
12		63.3	53.0									64.1	12	12		
14		57.3	47.7	42.5								59.3	14	14		
16		52.6	43.7	38.5	30.5							51.1	16	16		
18		46.4	40.4	35.5	29.7	22.1						44.6	18	18		
20		41.0	37.8	32.9	27.8	21.5	18.6	39.5	39.2	37.2	29.4	22.0	20	20		
22		36.5	35.2	30.8	25.4	20.9	16.1	35.2	35.0	33.8	27.0	21.4	22	22		
24		32.8	32.7	29.0	23.3	20.0	15.6	33.6	31.5	31.0	24.7	20.9	24	24		
26		29.6	29.6	26.4	21.5	18.2	15.1	32.2	28.5	28.5	22.8	19.4	26	26		
28		30.2	26.9	24.5	20.0	17.0	14.7	31.0	25.9	26.0	21.3	17.9	28	28		
30		27.1	24.5	22.9	18.4	15.7	14.2	28.1	23.6	23.7	19.9	16.8	30	30		
32		27.5	22.3	21.4	17.2	14.6	13.2	27.0	21.6	21.8	18.5	15.7	32	32		
34		24.9	23.0	20.0	16.1	13.8	12.4	24.4	21.1	20.0	17.5	14.6	34	34		
36		22.7	20.9	18.8	15.2	12.9	11.5	22.2	20.5	18.4	16.4	13.9	36	36		
38		21.8	19.2	17.4	14.3	12.1	10.8	21.3	18.7	17.0	15.5	13.1	38	38		
40		20	19.0	16.0	13.6	11.5	10.2	19.5	18.2	15.5	14.6	12.4	40	40		
42		18.3	17.7	15.7	12.9	10.8	9.7	17.8	16.7	15.3	13.9	11.7	42	42		
44		16.8	16.3	14.5	12.2	10.3	9.0	16.3	16.2	15.0	13.2	11.1	44	44		
46			15.1	13.4	11.6	9.8	8.7	15	15.6	13.8	12.5	10.5	46	46		
48			14.9	12.4	11.0	9.3	8.2	13.7	14.4	13.4	11.5	10.1	48	48		
50			13.7	11.4	10.6	8.8	7.7		13.2	12.4	10.6	9.6	50	50		
52				10.6	10.1	8.5	7.3		12.2	11.4	9.8	9.2	52	52		
54				10.5	10.2	8.0	7.0		11.2	10.5	9.7	8.7	54	54		
56					9.4	7.7	6.7			9.7	9.5	8.4	56	56		
58					8.7	7.4	6.4			9.0	8.8	8.0	58	58		
60						8.6	7.1	6.1			8.2	7.4	6.4	60	60	
62							6.8	5.9			7.9	6.9	6.2	62	62	
64							6.5	5.5			7.6	6.4	5.9	64	64	
66								5.3				5.9	5.6	66	66	
68								5.1					5.4	68	68	
70									4.9					70	70	
72													4.7	72	72	
74														4.4	74	74

Notes: 1. The actual weight is a value that the rated weight in this table is subtracted by the weights of the hooks, hangers, and wire ropes winding on the hooks and on the boom head.
2. The rated load in this table is measured under the condition that the heavy object is lifted slowly and stably from the level and hard soil ground.

FIXED JIB LOAD CHARTS

SCC2600A Fixed Jib Load Charts (Without Jib Head Pulley Block)

Without main hook; jib angle: 10°

Unit: (t)													
Boom length (m)						Boom length (m)							
53						56							
Jib length (m)	13	19	24.5	30.5	36	42	13	19	24.5	30.5	36	42	
Radius(m)	Radius(m)												
10													10
12	58.8						58.8						12
14	59.9	62.7					55.7	49.5					14
16	49.1	48.5	39.8				48.2	47.6	38.2				16
18	43.0	42.6	39.2	28.8	21.8		42.1	41.8	37.7	28.1			18
20	38.0	37.7	37.6	28.3	21.4	18.0	37.2	37.0	36.8	27.6	22.4	16.9	20
22	33.8	33.7	33.6	27.8	20.9	15.6	35.3	33.0	32.9	27.2	22.0	16.5	22
24	32.3	30.3	30.2	25.9	20.5	15.2	31.6	29.6	29.6	26.6	21.5	16.1	24
26	29.1	27.3	27.4	24.1	20.0	14.9	30.2	28.7	28.8	24.5	21.0	15.8	26
28	28.3	24.8	24.9	22.4	18.8	14.5	28.9	24.2	24.3	22.8	20.6	15.4	28
30	26.9	22.6	22.7	20.9	17.7	14.2	27.6	23.4	22.1	21.5	19.2	15.0	30
32	27.2	22.0	20.8	19.6	16.5	13.8	26.5	22.8	20.3	20.2	18.1	14.6	32
34	24.8	21.3	19.1	18.5	15.6	13.3	24.1	22.7	18.5	18.6	17.0	14.3	34
36	22.7	20.7	17.5	17.3	14.6	12.5	22	22.4	17.0	17.1	15.9	13.7	36
38	20.7	19.1	16.1	16.2	13.9	11.9	20.2	20.5	16.6	15.7	15.1	12.9	38
40	18.9	18.5	15.8	14.9	13.2	11.1	18.4	18.8	16.3	14.5	14.4	12.2	40
42	17.2	17.9	15.5	13.8	12.5	10.8	16.9	17.3	15.0	13.4	13.7	11.5	42
44	16.7	16.4	14.3	12.8	11.9	10.1	15.4	15.9	14.6	12.3	13.0	11.0	44
46	14.4	15	13.3	11.8	11.2	9.5	14	14.6	14.0	11.4	12.2	10.5	46
48	13.1	13.8	12.2	11.0	10.8	9.1	12.7	13.4	13.8	10.5	11.4	9.6	48
50	12	12.8	11.1	10.1	10.2	8.6	11.6	12.2	12.7	10.3	10.5	9.4	50
52	10.9	11.5	10.9	10.0	9.5	8.2	10.5	11.2	11.7	10.1	9.7	9.0	52
54	9.9	10.6	10.0	9.8	8.8	7.9	9.6	10.2	10.7	9.4	9.0	8.6	54
56	9.7	9.4	9.3	8.2	7.5	8.7	9.3	9.8	9.4	8.2	8.2	8.2	56
58	8.8	9.3	9.0	7.5	7.2		8.4	9	9.3	7.6	7.7		58
60		8.6	8.9	7.0	6.9		7.7	8.2	8.5	7.0	7.1		60
62		7.8	8.2	6.4	6.5			7.5	7.8	6.4	6.5		62
64		7.1	7.5	5.9	6.0			6.8	7.1	5.9	6.0		64
66			6.8	5.4	5.6			6.1	6.5	5.4	5.4		66
68			6.2	5.0	5.1				5.9	4.9	5.0		68
70				4.5	4.7				5.3	4.5	4.6		70
72				4.1	4.2					4.0	4.1		72
74					3.7	3.8				3.6	3.7		74
76						3.5				3.2	3.3		76
78							3.2				3.0		78
80											2.6		80

Notes: 1. The actual weight is a value that the rated weight in this table is subtracted by the weights of the hooks, hangers, and wire ropes winding on the hooks and on the boom head.
2. The rated load in this table is measured under the condition that the heavy object is lifted slowly and stably from the level and hard soil ground.

FIXED JIB LOAD CHARTS

SCC2600A Fixed Jib Load Charts (Without Jib Head Pulley Block)

Without main hook; jib angle: 10°

Unit: (t)															
Boom length (m)						Boom length (m)									
59						62									
Jib length (m)	13	19	24.5	30.5	36	42	13	19	24.5	30.5	36	42			
Radius(m)	Radius(m)														
10													10		
12													12		
14		54.7	46.5						53.8				14		
16		47.3	46.0	36.5					46.4	43.5	35.0		16		
18		41.4	41.1	36.1	27.3				40.5	40.3	34.7	26.6	18		
20		36.5	36.4	35.6	26.9	20.7			35.8	35.6	34.2	26.3	20.3	20	
22		34.7	32.5	32.4	26.5	20.3	15.3	36.0	31.8	31.7	25.8	20.0	15.2	22	
24		31.0	29.1	29.1	26.0	19.9	15.0	32.3	28.5	28.5	25.4	19.6	14.9	24	
26		30.7	28.3	26.3	25.2	19.5	14.6	30.7	25.7	25.8	25.0	19.3	14.6	26	
28		29.9	23.8	23.9	23.6	19.1	14.3	30.8	24.8	23.3	23.3	18.9	14.2	28	
30		28.6	23.0	21.8	21.8	18.5	14.0	27.9	23.9	21.2	21.2	18.5	14.0	30	
32		26	22.9	19.9	19.9	17.3	13.8	25.3	23.8	19.4	19.4	17.7	13.7	32	
34		23.7	22.1	18.2	18.2	16.3	13.4	23	23.3	17.7	17.8	16.7	13.4	34	
36		21.6	21.9	16.7	16.7	15.5	13.1	20.9	21.3	17.3	16.3	15.8	13.1	36	
38		19.7	20.1	16.3	15.4	14.6	12.4	19.1	19.4	15.8	14.9	14.9	12.7	38	
40		18	18.4	15.9	14.2	13.9	11.7	17.4	17.8	15.3	13.7	13.8	11.9	40	
42		16.5	16.9	14.6	13.1	13.1	11.2	15.9	16.3	14.9	12.6	12.8	11.4	42	
44		15.1	15.6	13.4	12.0	12.2	10.5	14.5	14.9	13.8	11.6	11.7	10.7	44	
46		13.8	14.2	12.4	11.1	11.2	10.0	13.2	13.6	12.9	11.4	10.8	10.3	46	
48		12.6	13	11.4	10.9	10.4	9.5	12	12.4	12.8	11.1	10.0	9.8	48	
50		11.4	11.9	11.1	10.6	9.5	9.2	10.9	11.3	11.8	10.6	9.2	9.2	50	
52		10.4	10.9	10.7	10.4	9.4	9.3	9.9	10.3	10.8	10.1	8.4	8.5	52	
54		9.4	10	10.4	9.9	8.6	8.7	9	9.4	9.8	10.1	7.7	7.8	54	
56		8.5	9.1	9.5	9.7	8.0	8.0	8.1	8.5	9	9.2	7.1	7.1	56	
58		7.7	8.3	8.7	8.9	7.4	7.4	7.3	7.7	8.1	8.4	6.5	6.5	58	
60			7.5	7.9	8.2	6.7	6.8	6.5	6.9	7.4	7.6	5.9	6.0	60	
62			6.7	7.2	7.4	6.2	6.2		6.2	6.7	6.9	5.4	5.5	62	
64			6.1	6.5	6.8	5.6	5.7		5.5	6	6.2	4.9	5.0	64	
66				5.9	6.1	5.1	5.2		4.9	5.3	5.6	4.4	4.5	66	
68				5.3	5.5	4.6	4.7			4.7	5	4.0	4.1	68	
70					4.9	4.2	4.2			4.2	4.4	3.5	3.6	70	
72					4.4	3.8	3.8				3.9	3.2	3.2	72	
74						3.9	3.4	3.4			3.4	2.8	2.9	74	
76							3.0	3.0				2.9	2.4	2.5	76
78								2.6	2.6				2.0	2.1	78
80									2.3				1.7	1.8	80
82										2.0				1.5	82
84											1.7			1.2	84

Notes: 1. The actual weight is a value that the rated weight in this table is subtracted by the weights of the hooks, hangers, and wire ropes winding on the hooks and on the boom head.
2. The rated load in this table is measured under the condition that the heavy object is lifted slowly and stably from the level and hard soil ground.

FIXED JIB LOAD CHARTS

SCC2600A Fixed Jib Load Charts (Without Jib Head Pulley Block)

Without main hook; jib angle: 30°

Unit: (t)

Boom length (m)		29						35						Boom length (m)			
Jib length (m)	13	19	24.5	30.5	36	42	13	19	24.5	30.5	36	42	Jib length (m)	Radius(m)			
12													12				
14	27.8						28.4						14				
16	26.2						26.9						16				
18	24.7	20.6					25.5	21					18				
20	23.4	19.4	17.5				24.3	19.9					20				
22	22.3	18.4	16.5				23.2	19	16.8				22				
24	21.3	17.5	15.7	13.9			22.3	18.1	16	14.1			24				
26	20.5	16.7	14.9	13.2			21.4	17.3	15.3	13.5			26				
28	19.7	16	14.2	12.6	11.8		20.7	16.7	14.7	12.9	12		28				
30	19	15.3	13.6	12	11.2		20	16	14.1	12.3	11.5		30				
32	18.4	14.8	13	11.5	10.7	10	19.4	15.5	13.5	11.8	11	10.3	32				
34	17.9	14.3	12.5	11	10.3	9.5	18.8	14.9	13.1	11.4	10.5	9.8	34				
36	17.5	13.8	12.1	10.5	9.8	9.1	18.3	14.5	12.6	10.9	10.1	9.4	36				
38		13.4	11.7	10.2	9.4	8.7	17.9	14.1	12.3	10.6	9.8	9	38				
40		13	11.3	9.8	9.1	8.4	17.6	13.7	11.9	10.2	9.4	8.7	40				
42		12.7	11	9.5	8.7	8.1	17.3	13.3	11.5	9.9	9.1	8.4	42				
44			10.7	9.2	8.4	7.8		13	11.2	9.6	8.8	8.1	44				
46			10.5	8.9	8.2	7.5		12.8	10.9	9.3	8.5	7.8	46				
48				10.2	8.6	7.9	7.2			10.7	9	8.2	48				
50					8.4	7.7	6.9			10.5	8.8	8	7.3	50			
52					8.2	7.4	6.6			10.3	8.6	7.8	7	52			
54						8	7.2	6.4			8.4	7.6	6.8	54			
56						7.1	6.2				8.2	7.4	6.5	56			
58							6.9	5.9			8.1	7.2	6.3	58			
60								6.8	5.7			7.1	6	60			
62									5.5			6.9	5.9	62			
64										5.3			6.8	5.7	64		
66														5.5	66		
68															5.4	68	
70															5.2	70	

Notes: 1. The actual weight is a value that the rated weight in this table is subtracted by the weights of the hooks, hangers, and wire ropes winding on the hooks and on the boom head.
2. The rated load in this table is measured under the condition that the heavy object is lifted slowly and stably from the level and hard soil ground.

FIXED JIB LOAD CHARTS

SCC2600A Fixed Jib Load Charts (Without Boom Hook and Counterweight 100+30t)

Without main hook; jib angle: 30°

Unit: (t)

Boom length (m)		41						47						Boom length (m)	
Jib length (m)	13	19	24.5	30.5	36	42	13	19	24.5	30.5	36	42	Jib length (m)	Radius(m)	
14													14		
16	26.9						27.9						16		
18	25.7	20.9					26.7						18		
20	24.6	19.9					25.6	20.7					20		
22	23.6	19	16.7				24.7	19.8	17.4				22		
24	22.7	18.2	16				23.8	19.1	16.7				24		
26	21.9	17.5	15.3	13.3			23	18.4	16	13.9			26		
28	21.1	16.9	14.7	12.8	11.8		22.2	17.7	15.4	13.3			28		
30	20.4	16.3	14.2	12.3	11.4		21.6	17.1	14.9	12.8	11.8		30		
32	19.8	15.7	13.7	11.8	10.9	10	20.9	16.6	14.4	12.4	11.4	10.4	32		
34	19.3	15.2	13.2	11.4	10.5	9.6	20.4	16.1	13.9	12	11	10	34		
36	18.8	14.8	12.8	11	10.1	9.3	19.9	15.6	13.5	11.6	10.6	9.7	36		
38	18.3	14.3	12.4	10.5	9.8	8.9	19.4	15.2	13.1	11.2	10.3	9.4	38		
40	17.9	14	12.1	10.1	9.4	8.6	18.9	14.8	12.7	10.9	9.9	9	40		
42	17.6	13.6	11.7	9.6	9.1	8.3	18.5	14.4	12.4	10.6	9.6	8.7	42		
44	17.3	13.3	11.4	9.2	8.8	8	18.1	14.1	12.1	10.3	9.3	8.5	44		
46	16.8	13	11.1	8.9	8.6	7.8	17.6	13.8	11.8	10	9.1	8.2	46		
48		12.8	10.9	8.5	8.3	7.5	17.2	13.5	11.5	9.7	8.8	8	48		
50			12.5	10.6	8.3	8.1	16.8	13.3	11.3	9.5	8.6	7.7	50		
52				12.3	10.4	8	16.4	13.1	11.1	9.3	8.4	7.5	52		
54					10.2	7.8	16	12.9	10.9	9.1	8.2	7.3	54		
56						10.1	12.7	10.7	10.6	8.9	8	7.1	56		
58							12.5	10.5	8.7	7.8	6.9	58			
60								12.3	10.3	8.5	7.6	6.8	60		
62									12.1	10.1	8.3	7.4	62		
64										11.9	10.1	8.1	64		
66											11.7	9.9	66		
68												11.5	68		
70													70		

Notes: 1. The actual weight is a value that the rated weight in this table is subtracted by the weights of the hooks, hangers, and wire ropes winding on the hooks and on the boom head.
2. The rated load in this table is measured under the condition that the heavy object is lifted slowly and stably from the level and hard soil ground.

unit: (t)

FIXED JIB LOAD CHARTS

SCC2600A Fixed Jib Load Charts (Without Boom Hook and Counterweight 100+30t)

Without main hook; jib angle: 30°

Unit: (t)													
53						56							
Boom length (m)						Boom length (m)							
Jib length (m)	13	19	24.5	30.5	36	42	13	19	24.5	30.5	36	42	
Radius(m)	Radius(m)												
14													14
16	28.3						28.5						16
18	27.2						27.4						18
20	26.2	21					26.4	21.1					20
22	25.2	20.2					25.5	20.3					22
24	24.4	19.4	16.9				24.6	19.6	17				24
26	23.6	18.6	16.3	14			23.9	19	16.4				26
28	22.9	18.2	15.7	13.5			23.2	18.3	15.9	13.6			28
30	22.2	17.6	15.2	13.1	12		22.5	17.8	15.4	13.2	12.1		30
32	21.6	17.1	14.7	12.6	11.6		21.9	17.3	14.9	12.7	11.7		32
34	21	16.6	14.3	12.2	11.2	10.2	21.4	16.8	14.4	12.3	11.3	10.2	34
36	20.5	16.1	13.9	11.8	10.8	9.8	20.8	16.3	14	12	10.9	9.9	36
38	20	15.7	13.5	11.5	10.5	9.5	20.4	15.9	13.6	11.6	10.6	9.6	38
40	19.6	15.3	13.1	11.2	10.2	9.2	19.9	15.5	13.3	11.3	10.3	9.3	40
42	18	14.9	12.8	10.9	9.9	8.9	17.7	15.2	12.9	11	10	9	42
44	16.4	14.6	12.4	10.6	9.6	8.7	16.1	14.8	12.6	10.7	9.7	8.7	44
46	15	14.3	12.2	10.3	9.3	8.4	14.7	14.5	12.3	10.4	9.4	8.5	46
48	13.7	14	11.9	10	9.1	8.2	13.4	14.2	12.1	10.2	9.2	8.3	48
50	12.5	13.5	11.7	9.8	8.9	7.9	12.2	13.2	11.9	9.9	9	8	50
52	11.4	12.3	11.4	9.6	8.6	7.7	11.1	12	11.6	9.7	8.8	7.8	52
54	10.3	11.3	11.2	9.4	8.4	7.5	10	11	11.4	9.5	8.5	7.6	54
56		10.3	11	9.2	8.2	7.3	9.1	10	10.8	9.3	8.4	7.4	56
58		9.4	10.2	9	8	7.2	8.1	9.1	9.9	9.1	8.2	7.3	58
60		8.5	9.3	8.8	7.9	7	8.2	9	8.9	8	7.1	6.0	60
62			8.5	8.6	7.7	6.8		7.4	8.2	8.8	7.8	6.9	62
64			7.7	8.4	7.6	6.6		6.6	7.4	8.1	7.7	6.8	64
66			7	7.7	7.4	6.4		6.7	7.4	7.5	6.6	5.7	66
68				7	7.3	6.2		6	6.7	7.3	6.3	5.4	68
70				6.3	6.9	6			6	6.6	6.2	5.3	70
72				5.7	6.3	5.9			5.4	6	6	5.1	72
74					5.7	5.8			4.8	5.4	5.8	4.9	74
76					5.1	5.6				4.8	5.3	4.7	76
78						4.5	5			4.3	4.7	4.1	78
80							4.5			3.7	4.2	3.6	80
82								4			3.7	3.1	82
84									3.5			3.2	84
86												2.7	86

Notes: 1. The actual weight is a value that the rated weight in this table is subtracted by the weights of the hooks, hangers, and wire ropes winding on the hooks and on the boom head.
2. The rated load in this table is measured under the condition that the heavy object is lifted slowly and stably from the level and hard soil ground.

FIXED JIB LOAD CHARTS

SCC2600A Fixed Jib Load Charts (Without Boom Hook and Counterweight 100+30t)

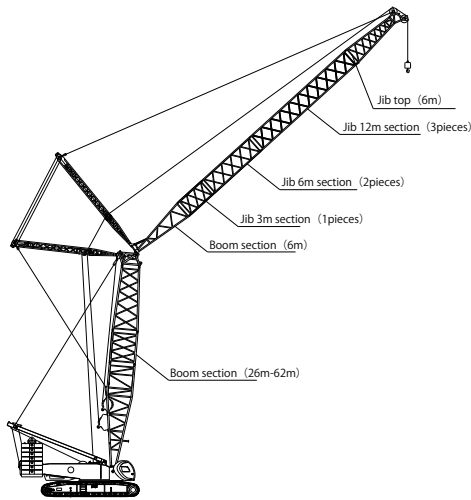
Without main hook; jib angle: 30°

Unit: (t)													
59						62							
Boom length (m)						Boom length (m)							
Jib length (m)	13	19	24.5	30.5	36	42	13	19	24.5	30.5	36	42	
Radius(m)	Radius(m)												
16													16
18		27.6					27.7						18
20		26.6	21.2				26.8						20
22		25.7	20.5				25.9	20.6					22
24		24.9	19.8	17.1			25.1	19.9	17.2				24
26		24.1	19.1	16.5			24.4	19.3	16.7				26
28		23.5	18.5	16	13.7		23.7	18.7	16.1	13.8			28
30		22.8	18	15.5	13.3	12.1	23.1	18.2	15.6	13.4			30
32		22.2	17.5	15	12.8	11.7	22.5	17.7	15.2	12.9	11.8		32
34		21.6	17	14.6	12.5	11.4	21.9	17.2	14.7	12.6	11.4	10.3	34
36		21.1	16.5	14.2	12.1	11	21.4	16.7	14.3	12.2	11.1	10	36
38		20.6	16.1	13.8	11.7	10.7	20.9	16.3	14	11.9	10.8	9.7	38
40		19.1	15.7	13.5	11.4	10.4	19.5	15.9	13.6	11.5	10.5	9.4	40
42		17.5	15.4	13.1	11.1	10.1	18.9	15.6	13.3	11.2	10.2	9.2	42
44		16	15	12.8	10.8	9.8	18.4	15.2	13	11	9.9	8.9	44
46		14.6	14.7	12.5	10.6	9.6	17.9	14.9	12.7	10.7	9.7	8.7	46
48		13.3	14.2	12.3	10.3	9.3	17.4	14.4	12.4	10.4	9.4	8.4	48
50		12.1	13	12	10.1	9.1	16.9	13.7	12.2	10.2	9.2	8.2	50
52		10.9	11.9	11.8	9.9	8.9	16.4	13.5	12	10	9	8	52
54		9.9	10.8	11.6	9.6	8.7	15.9	13.4	11.9	10.4	9.4	8.4	54
56		9	9.9	10.7	9.4	8.5	15.4	13.3	11.8	10.3	9.3	8.3	56
58		8.1	9	9.8	9.3	8.3	14.9	13.2	11.7	10.2	9.2	8.2	58
60		7.2	8.1	8.9	9.1	8.1	14.4	13.1	11.6	10.1	9.1	8.1	60
62			7.3	8.1	8.7	8	13.9	13	11.5	10	9	8	62
64			6.5	7.3	7.9	7.8	13.4	12.9	11.4	9.9	8.9	7.9	64
66			5.8	6.6	7.2	7.6	12.9	12.8	11.3	9.8	8.8	7.8	66
68				5.9	6.5	7	12.4	12.7	11.2	9.7	8.7	7.7	68
70					5.3	5.8	11.9	12.6	11.1	9.6	8.6	7.6	70
72						5.2	11.4	12.5	11	9.5	8.5	7.5	72
74						4.6	10.9	12.4	10.9	9.4	8.4	7.4	74
76							10.4	12.3	10.8	9.3	8.3	7.3	76
78								12.2	10.7	9.2	8.2	7.2	78
80									12.1	10.6	9.1	8.1	80
82										12	10.5	9	82
84											12	10.4	84
86												12	86
88													88

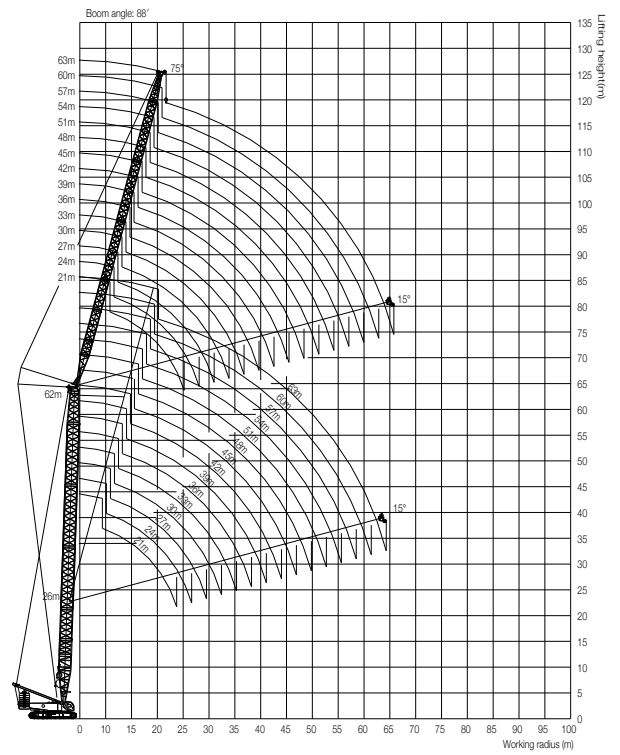
Notes: 1. The actual weight is a value that the rated weight in this table is subtracted by the weights of the hooks, hangers, and wire ropes winding on the hooks and on the boom head.
2. The rated load in this table is measured under the condition that the heavy object is lifted slowly and stably from the level and hard soil ground.

LUFFING JIB COMBINATION

Jib length (m)	Insert			Boom length (m)	Angle between boom and jib
	3m	6m	12m		
21	1	1	--	26-62	65°-88°
24	--	2	--	26-62	65°-88°
27	1	1	--	26-62	65°-88°
30	--	1	1	26-62	65°-88°
33	1	1	1	26-62	65°-88°
36	--	2	1	26-62	65°-88°
39	1	2	1	26-62	65°-88°
42	--	2	2	26-62	65°-88°
45	1	1	2	26-62	65°-88°
48	--	2	2	26-62	65°-88°
51	1	2	2	26-62	65°-88°
54	--	1	3	26-62	65°-88°
57	1	1	3	26-62	65°-88°
60	--	2	3	26-62	65°-88°
63	1	2	3	26-62	65°-88°



LUFFING JIB OPERATING CONDITION WORKING RANGE DIAGRAM



LUFFING JIB LOAD CHARTS

SCC2600A Luffing Jib Load Charts (Without Jib Head Pulley Block)

Unit: (t)

Boom length (m) Jib height (m) Radius (°)	26																								
	21	24	27	30	33	36	39	42	45	48	51	54	57	60	63	66	69	72	75	78	81	84	87	90	
10	90	88	86	84	82	80	78	76	74	72	70	68	66	64	62	60	58	56	54	52	50	48	46	44	42
12	88	86	84	82	80	78	76	74	72	70	68	66	64	62	60	58	56	54	52	50	48	46	44	42	40
14	86	84	82	80	78	76	74	72	70	68	66	64	62	60	58	56	54	52	50	48	46	44	42	40	38
16	84	82	80	78	76	74	72	70	68	66	64	62	60	58	56	54	52	50	48	46	44	42	40	38	36
18	82	80	78	76	74	72	70	68	66	64	62	60	58	56	54	52	50	48	46	44	42	40	38	36	34
20	80	78	76	74	72	70	68	66	64	62	60	58	56	54	52	50	48	46	44	42	40	38	36	34	32
22	78	76	74	72	70	68	66	64	62	60	58	56	54	52	50	48	46	44	42	40	38	36	34	32	30
24	76	74	72	70	68	66	64	62	60	58	56	54	52	50	48	46	44	42	40	38	36	34	32	30	28
26	74	72	70	68	66	64	62	60	58	56	54	52	50	48	46	44	42	40	38	36	34	32	30	28	26
28	72	70	68	66	64	62	60	58	56	54	52	50	48	46	44	42	40	38	36	34	32	30	28	26	24
30	70	68	66	64	62	60	58	56	54	52	50	48	46	44	42	40	38	36	34	32	30	28	26	24	22
32	68	66	64	62	60	58	56	54	52	50	48	46	44	42	40	38	36	34	32	30	28	26	24	22	20
34	66	64	62	60	58	56	54	52	50	48	46	44	42	40	38	36	34	32	30	28	26	24	22	20	18
36	64	62	60	58	56	54	52	50	48	46	44	42	40	38	36	34	32	30	28	26	24	22	20	18	16
38	62	60	58	56	54	52	50	48	46	44	42	40	38	36	34	32	30	28	26	24	22	20	18	16	14
40	60	58	56	54	52	50	48	46	44	42	40	38	36	34	32	30	28	26	24	22	20	18	16	14	12
42	58	56	54	52	50	48	46	44	42	40	38	36	34	32	30	28	26	24	22	20	18	16	14	12	10
44	56	54	52	50	48	46	44	42	40	38	36	34	32	30	28	26	24	22	20	18	16	14	12	10	8
46	54	52	50	48	46	44	42	40	38	36	34	32	30	28	26	24	22	20	18	16	14	12	10	8	6
48	52	50	48	46	44	42	40	38	36	34	32	30	28	26	24	22	20	18	16	14	12	10	8	6	4
50	50	48	46	44	42	40	38	36	34	32	30	28	26	24	22	20	18	16	14	12	10	8	6	4	2
52	48	46	44	42	40	38	36	34	32	30	28	26	24	22	20	18	16	14	12	10	8	6	4	2	0
54	46	44	42	40	38	36	34	32	30	28	26	24	22	20	18	16	14	12	10	8	6	4	2	0	0
56	44	42	40	38	36	34	32	30	28	26	24	22	20	18	16	14	12	10	8	6	4	2	0	0	0
58	42	40	38	36	34	32	30	28	26	24	22	20	18	16	14	12	10	8	6	4	2	0	0	0	0
60	40	38	36	34	32	30	28	26	24	22	20	18	16	14	12	10	8	6	4	2	0	0	0	0	0
62	38	36	34	32	30	28	26	24	22	20	18	16	14	12	10	8	6	4	2	0	0	0	0	0	0
64	36	34	32	30	28	26	24	22	20	18	16	14	12	10	8	6	4	2	0	0	0	0	0	0	0
66	34	32	30	28	26	24	22	20	18	16	14	12	10	8	6	4	2	0	0	0	0	0	0	0	0
68	32	30	28	26	24	22	20	18	16	14	12	10	8	6	4	2	0	0	0	0	0	0	0	0	0

Notes: 1. The actual weight is value that the rated weight in this table is subtracted by the weights of the hoists, luffers and were representing on the hoists and on the boom head.
2. The rated load in this table is measured under the condition that the heavy object is lifted slowly and safely from the level and set on ground.

SCC2600A Luffing Jib Load Charts (Without Jib Head Pulley Block)

Unit: (t)

Boom length (m) Jib height (m) Radius (°)	26																								
	33	36	39	42	45	48	51	54	57	60	63	66	69	72	75	78	81	84	87	90	93	96	99	102	
10	90	88	86	84	82	80	78	76	74	72	70	68	66	64	62	60	58	56	54	52	50	48	46	44	42
12	88	86	84	82	80	78	76	74	72	70	68	66	64	62	60	58	56	54	52	50	48	46	44	42	40
14	86	84	82	80	78	76	74	72	70	68	66	64	62	60	58	56	54	52	50	48	46	44	42	40	38
16	84	82	80	78	76	74	72	70	68	66	64	62	60	58	56	54	52	50	48	46	44	42	40	38	36
18	82	80	78	76	74	72	70	68	66	64	62	60	58	56	54	52	50	48	46	44	42	40	38	36	34
20	80	78	76	74	72	70	68	66	64	62	60	58	56	54	52	50	48	46	44	42	40	38	36	34	32
22	78	76	74	72	70	68	66	64	62	60	58	56	54	52	50	48	46	44	42	40	38	36	34	32	30
24	76	74	72	70	68	66	64	62	60	58	56	54	52	50	48	46	44	42	40	38	36	34	32	30	28
26	74	72	70	68	66	64	62	60	58	56	54	52	50	48	46	44	42	40	38	36	34	32	30	28	26
28	72	70	68	66	64	62	60	58	56	54	52	50	48	46	44	42	40	38	36	34	32	30	28	26	24
30	70	68	66	64	62	60	58	56	54	52	50	48	46	44	42	40	38	36	34	32	30	28	26	24	22
32	68	66	64	62	60	58	56	54	52	50	48	46	44	42	40	38	36	34	32	30	28	26	24	22	20
34	66	64	62	60	58	56	54	52	50	48	46	44	42	40	38	36	34	32	30	28	26	24	22	20	18
36	64	62	60	58	56	54	52	50	48	46	44	42	40	38	36	34	32	30	28	26	24	22	20	18	16
38	62	60	58	56	54	52	50	48	46	44	42	40	38	36	34	32	30	28	26	24	22	20	18	16	14
40	60	58	56	54	52	50	48	46	44	42	40	38	36	34	32	30	28	26	24	22	20	18	16	14	12
42	58	56	54	52	50	48	46	44	42	40	38	36	34	32	30	28	26	24	22	20	18	16	14	12	10
44	56	54	52	50	48	46	44	42	40	38	36	34	32	30	28	26	24	22	20	18	16	14	12	10	8
46	54	52	50	48	46	44	42	40	38	36	34	32	30	28	26	24	22	20	18	16	14	12	10	8	6
48	52	50	48	46	44	42	40	38	36	34	32	30	28	26	24	22	20	18	16	14	12	10	8	6	4
50	50	48	46	44	42	40	38	36	34	32	30	28	26	24	22	20	18	16	14	12	10	8	6	4	2
52	48	46	44	42	40	38	36	34	32	30	28	26	24	22	20	18	16	14	12	10	8	6	4	2	0
54	46	44	42	40	38	36	34	32	30	28	26	24	22	20	18	16	14	12	10	8	6	4	2	0	0
56	44	42	40	38	36	34	32	30	28	26	24	22	20	18	16	14	12	10	8	6	4	2	0	0	0
58	42	40	38	36	34	32	30	28	26	24	22	20	18	16	14	12	10	8	6	4	2	0	0	0	0
60	40	38	36	34	32	30	28	26	24	22	20	18	16	14	12	10	8	6	4	2	0	0	0	0	0
62	38	36	34	32	30	28	26	24	22	20	18	16	14	12	10	8	6	4	2	0	0	0	0	0	0
64	36	34	32	30	28	26	24	22	20	18	16	14	12	10	8	6	4	2	0	0	0	0	0	0	0
66	34	32	30	28	26	24	22	20	18	16	14	12	10	8	6	4	2	0	0	0	0	0	0	0	0
68	32	30	28	26	24	22	20	18	16	14	12	10	8	6	4	2	0	0	0	0	0	0	0	0	0

Notes: 1. The actual weight is value that the rated weight in this table is subtracted by the weights of the hoists, luffers and were representing on the hoists and on the boom head.
2. The rated load in this table is measured under the condition that the heavy object is lifted slowly and safely from the level and set on ground.

LUFFING JIB LOAD CHARTS

SCC2600A Luffing Jib Load Charts (Without Jib Head Pulley Block)

Unit: (t)

Jib length (m) Booms angle (°)	Boom length (m)										
	45	46	48	50	51	54	55	58	60	65	
10	10	10	10	10	10	10	10	10	10	10	10
12	12	12	12	12	12	12	12	12	12	12	12
14	14	14	14	14	14	14	14	14	14	14	14
16	16	16	16	16	16	16	16	16	16	16	16
18	18	18	18	18	18	18	18	18	18	18	18
20	20	20	20	20	20	20	20	20	20	20	20
22	22	22	22	22	22	22	22	22	22	22	22
24	24	24	24	24	24	24	24	24	24	24	24
26	26	26	26	26	26	26	26	26	26	26	26
28	28	28	28	28	28	28	28	28	28	28	28
30	30	30	30	30	30	30	30	30	30	30	30
32	32	32	32	32	32	32	32	32	32	32	32
34	34	34	34	34	34	34	34	34	34	34	34
36	36	36	36	36	36	36	36	36	36	36	36
38	38	38	38	38	38	38	38	38	38	38	38
40	40	40	40	40	40	40	40	40	40	40	40
42	42	42	42	42	42	42	42	42	42	42	42
44	44	44	44	44	44	44	44	44	44	44	44
46	46	46	46	46	46	46	46	46	46	46	46
48	48	48	48	48	48	48	48	48	48	48	48
50	50	50	50	50	50	50	50	50	50	50	50
52	52	52	52	52	52	52	52	52	52	52	52
54	54	54	54	54	54	54	54	54	54	54	54
56	56	56	56	56	56	56	56	56	56	56	56
58	58	58	58	58	58	58	58	58	58	58	58
60	60	60	60	60	60	60	60	60	60	60	60
62	62	62	62	62	62	62	62	62	62	62	62
64	64	64	64	64	64	64	64	64	64	64	64
66	66	66	66	66	66	66	66	66	66	66	66
68	68	68	68	68	68	68	68	68	68	68	68

Notes: 1. The actual weight is a value that the rated weight in this table is authorized by the weight of the hoists, hangers, and wire ropes welded on the hoists and on the boom head.
2. The rated load in this table is measured under the condition that the heavy object is lifted slowly and stably from the level and hard soil ground.

LUFFING JIB LOAD CHARTS

SCC2600A Luffing Jib Load Charts (Without Jib Head Pulley Block)

Unit: (t)

Jib length (m) Booms angle (°)	Boom length (m)										
	45	46	48	50	51	54	55	58	60	65	
10	10	10	10	10	10	10	10	10	10	10	10
12	12	12	12	12	12	12	12	12	12	12	12
14	14	14	14	14	14	14	14	14	14	14	14
16	16	16	16	16	16	16	16	16	16	16	16
18	18	18	18	18	18	18	18	18	18	18	18
20	20	20	20	20	20	20	20	20	20	20	20
22	22	22	22	22	22	22	22	22	22	22	22
24	24	24	24	24	24	24	24	24	24	24	24
26	26	26	26	26	26	26	26	26	26	26	26
28	28	28	28	28	28	28	28	28	28	28	28
30	30	30	30	30	30	30	30	30	30	30	30
32	32	32	32	32	32	32	32	32	32	32	32
34	34	34	34	34	34	34	34	34	34	34	34
36	36	36	36	36	36	36	36	36	36	36	36
38	38	38	38	38	38	38	38	38	38	38	38
40	40	40	40	40	40	40	40	40	40	40	40
42	42	42	42	42	42	42	42	42	42	42	42
44	44	44	44	44	44	44	44	44	44	44	44
46	46	46	46	46	46	46	46	46	46	46	46
48	48	48	48	48	48	48	48	48	48	48	48
50	50	50	50	50	50	50	50	50	50	50	50
52	52	52	52	52	52	52	52	52	52	52	52
54	54	54	54	54	54	54	54	54	54	54	54
56	56	56	56	56	56	56	56	56	56	56	56
58	58	58	58	58	58	58	58	58	58	58	58
60	60	60	60	60	60	60	60	60	60	60	60
62	62	62	62	62	62	62	62	62	62	62	62
64	64	64	64	64	64	64	64	64	64	64	64
66	66	66	66	66	66	66	66	66	66	66	66
68	68	68	68	68	68	68	68	68	68	68	68

Notes: 1. The actual weight is a value that the rated weight in this table is authorized by the weight of the hoists, hangers, and wire ropes welded on the hoists and on the boom head.
2. The rated load in this table is measured under the condition that the heavy object is lifted slowly and stably from the level and hard soil ground.

LUFFING JIB LOAD CHARTS

SCC2600A Luffing Jib Load Charts (Without Jib Head Pulley Block)

Unit: (t)

Boom length (m) Jib height (m) Boom angle (°) Radius (m)	Boom length (m)																																																																																																																																																																																																																																																																																																																																																																																																																																																																																																																																																																																																																																																																																																																																																																																																																																																																																																																																																																																																																																																																																																																																																																																																																																																																																																																																																																																																																																												
	21	24	27	30	33	36	39	42	45	48	51	54	57	60	63	66	69	72	75	78	81	84	87	90	93	96	99	102	105	108	111	114	117	120	123	126	129	132	135	138	141	144	147	150	153	156	159	162	165	168	171	174	177	180	183	186	189	192	195	198	201	204	207	210	213	216	219	222	225	228	231	234	237	240	243	246	249	252	255	258	261	264	267	270	273	276	279	282	285	288	291	294	297	300	303	306	309	312	315	318	321	324	327	330	333	336	339	342	345	348	351	354	357	360	363	366	369	372	375	378	381	384	387	390	393	396	399	402	405	408	411	414	417	420	423	426	429	432	435	438	441	444	447	450	453	456	459	462	465	468	471	474	477	480	483	486	489	492	495	498	501	504	507	510	513	516	519	522	525	528	531	534	537	540	543	546	549	552	555	558	561	564	567	570	573	576	579	582	585	588	591	594	597	600	603	606	609	612	615	618	621	624	627	630	633	636	639	642	645	648	651	654	657	660	663	666	669	672	675	678	681	684	687	690	693	696	699	702	705	708	711	714	717	720	723	726	729	732	735	738	741	744	747	750	753	756	759	762	765	768	771	774	777	780	783	786	789	792	795	798	801	804	807	810	813	816	819	822	825	828	831	834	837	840	843	846	849	852	855	858	861	864	867	870	873	876	879	882	885	888	891	894	897	900	903	906	909	912	915	918	921	924	927	930	933	936	939	942	945	948	951	954	957	960	963	966	969	972	975	978	981	984	987	990	993	996	999	1002	1005	1008	1011	1014	1017	1020	1023	1026	1029	1032	1035	1038	1041	1044	1047	1050	1053	1056	1059	1062	1065	1068	1071	1074	1077	1080	1083	1086	1089	1092	1095	1098	1101	1104	1107	1110	1113	1116	1119	1122	1125	1128	1131	1134	1137	1140	1143	1146	1149	1152	1155	1158	1161	1164	1167	1170	1173	1176	1179	1182	1185	1188	1191	1194	1197	1200	1203	1206	1209	1212	1215	1218	1221	1224	1227	1230	1233	1236	1239	1242	1245	1248	1251	1254	1257	1260	1263	1266	1269	1272	1275	1278	1281	1284	1287	1290	1293	1296	1299	1302	1305	1308	1311	1314	1317	1320	1323	1326	1329	1332	1335	1338	1341	1344	1347	1350	1353	1356	1359	1362	1365	1368	1371	1374	1377	1380	1383	1386	1389	1392	1395	1398	1401	1404	1407	1410	1413	1416	1419	1422	1425	1428	1431	1434	1437	1440	1443	1446	1449	1452	1455	1458	1461	1464	1467	1470	1473	1476	1479	1482	1485	1488	1491	1494	1497	1500	1503	1506	1509	1512	1515	1518	1521	1524	1527	1530	1533	1536	1539	1542	1545	1548	1551	1554	1557	1560	1563	1566	1569	1572	1575	1578	1581	1584	1587	1590	1593	1596	1599	1602	1605	1608	1611	1614	1617	1620	1623	1626	1629	1632	1635	1638	1641	1644	1647	1650	1653	1656	1659	1662	1665	1668	1671	1674	1677	1680	1683	1686	1689	1692	1695	1698	1701	1704	1707	1710	1713	1716	1719	1722	1725	1728	1731	1734	1737	1740	1743	1746	1749	1752	1755	1758	1761	1764	1767	1770	1773	1776	1779	1782	1785	1788	1791	1794	1797	1800	1803	1806	1809	1812	1815	1818	1821	1824	1827	1830	1833	1836	1839	1842	1845	1848	1851	1854	1857	1860	1863	1866	1869	1872	1875	1878	1881	1884	1887	1890	1893	1896	1899	1902	1905	1908	1911	1914	1917	1920	1923	1926	1929	1932	1935	1938	1941	1944	1947	1950	1953	1956	1959	1962	1965	1968	1971	1974	1977	1980	1983	1986	1989	1992	1995	1998	2001	2004	2007	2010	2013	2016	2019	2022	2025	2028	2031	2034	2037	2040	2043	2046	2049	2052	2055	2058	2061	2064	2067	2070	2073	2076	2079	2082	2085	2088	2091	2094	2097	2100	2103	2106	2109	2112	2115	2118	2121	2124	2127	2130	2133	2136	2139	2142	2145	2148	2151	2154	2157	2160	2163	2166	2169	2172	2175	2178	2181	2184	2187	2190	2193	2196	2199	2202	2205	2208	2211	2214	2217	2220	2223	2226	2229	2232	2235	2238	2241	2244	2247	2250	2253	2256	2259	2262	2265	2268	2271	2274	2277	2280	2283	2286	2289	2292	2295	2298	2301	2304	2307	2310	2313	2316	2319	2322	2325	2328	2331	2334	2337	2340	2343	2346	2349	2352	2355	2358	2361	2364	2367	2370	2373	2376	2379	2382	2385	2388	2391	2394	2397	2400	2403	2406	2409	2412	2415	2418	2421	2424	2427	2430	2433	2436	2439	2442	2445	2448	2451	2454	2457	2460	2463	2466	2469	2472	2475	2478	2481	2484	2487	2490	2493	2496	2499	2502	2505	2508	2511	2514	2517	2520	2523	2526	2529	2532	2535	2538	2541	2544	2547	2550	2553	2556	2559	2562	2565	2568	2571	2574	2577	2580	2583	2586	2589	2592	2595	2598	2601	2604	2607	2610	2613	2616	2619	2622	2625	2628	2631	2634	2637	2640	2643	2646	2649	2652	2655	2658	2661	2664	2667	2670	2673	2676	2679	2682	2685	2688	2691	2694	2697	2700	2703	2706	2709	2712	2715	2718	2721	2724	2727	2730	2733	2736	2739	2742	2745	2748	2751	2754	2757	2760	2763	2766	2769	2772	2775	2778	2781	2784	2787	2790	2793	2796	2799	2802	2805	2808	2811	2814	2817	2820	2823	2826	2829	2832	2835	2838	2841	2844	2847	2850	2853	2856	2859	2862	2865	2868	2871	2874	2877	2880	2883	2886	2889	2892	2895	2898	2901	2904	2907	2910	2913	2916	2919	2922	2925	2928	2931	2934	2937	2940	2943	2946	2949	2952	2955	2958	2961	2964	2967	2970	2973	2976	2979	2982	2985	2988	2991	2994	2997	3000	3003	3006	3009	3012	3015	3018	3021	3024	3027	3030	3033	3036	3039	3042	3045	3048	3051	3054	3057	3060	3063	3066	3069	3072	3075	3078	3081	3084	3087	3090	3093	3096	3099	3102	3105	3108	3111	3114	3117	3120	3123	3126	3129	3132	3135	3138	3141	3144	3147	3150	3153	3156	3159	3162	3165	3168	3171	3174	3177	3180	3183	3186	3189	3192	3195	3198	3201	3204	3207	3210	3213	3216	3219	3222	3225	3228	3231	3234	3237	3240	3243	3246	3249	3252	3255	3258	3261	3264	3267	3270	3273	3276	3279	3282	3285	3288	3291	3294	3297	3300	3303	3306	3309	3312	3315	3318	3321	3324	3327	3330	3333	3336	3339	3342	3345	3348	3351	3354	3357	3360	3363	3366	3369	3372	3375	3378	3381	3384	3387	3390	3393	3396	3399	3402	3405	3408	3411	3414	3417	3420	3423	3426	3429	3432	3435	3438	3441	3444	3447	3450	3453	3456	3459	3462	3465	3468	3471	3474	3477	3480	3483	3486	3489	3492	3495	3498	3501	3504	3507	3510	3513	3516	3519	3522	3525	3528	3531	3534	3537	3540	3543	3546	3549	3552	3555	3558	3561	3564	3567	3570	3573	3576	3579	3582	3585	3588	3591	3594	3597	3600	3603	3606	3609	3612	3615	3618	3621	3624	3627	3630	3633	3636	3639	3642	3645	3648	3651	3654	3657	3660	3663	3666	3669	3672	3675	3678	3681	3684	3687	3690	3693	3696	3699	3702	3705	3708	3711	3714	3717	3720	3723	3726	3729	3732	3735	3738	3741	3744	3747	3750	3753	3756	3759	3762	3765	3768	3771	3774	3777	3780	3783	3786	3789	3792	3795	3798	3801	3804	3807	3810	3813	3816	3819	3822	3825	3828	3831	3834	3837	3840	3843	3846	3849	3852	3855	3858	3861	3864	3867	3870	3873	3876	3879	3882	3885	3888	3891	3894	3897	3900	3903	3906	3909	3912	3915	3918	3921	3924	3927	3930	3933	3936	3939	3942	3945	3948	3951	3954	3957	3960	3963	3966	3969	3972	3975	3978	3981	3984	3987	3990	3993	3996	3999	4002	4005	4008	4011	4014	4017	4020	4023	4026	4029	4032	4035	4038	4041	4044	4047	4050	4053	4056	4059	4062	4065	4068	4071	4074	4077	4080	4083	4086	4089	4092	4095	4098	4101	4104	4107	4110	4113	4116	4119	4122	4125	4128	4131	4134	4137	4140	4143	4146	4149	4152	4155	4158	4161	4164	4167	4170	4173	4176	4179	4182	4185

LUFFING JIB LOAD CHARTS

SCC2600A Luffing Jib Load Charts (Without Jib Head Pulley Block)

Unit: (t)

Jib length (m) Boomsig(°)	Boom length (m)									
	45	48	51	54	57	60	63	66	69	72
10	10	10	10	10	10	10	10	10	10	10
12	12	12	12	12	12	12	12	12	12	12
14	14	14	14	14	14	14	14	14	14	14
16	16	16	16	16	16	16	16	16	16	16
18	18	18	18	18	18	18	18	18	18	18
20	20	20	20	20	20	20	20	20	20	20
22	22	22	22	22	22	22	22	22	22	22
24	24	24	24	24	24	24	24	24	24	24
26	26	26	26	26	26	26	26	26	26	26
28	28	28	28	28	28	28	28	28	28	28
30	30	30	30	30	30	30	30	30	30	30
32	32	32	32	32	32	32	32	32	32	32
34	34	34	34	34	34	34	34	34	34	34
36	36	36	36	36	36	36	36	36	36	36
38	38	38	38	38	38	38	38	38	38	38
40	40	40	40	40	40	40	40	40	40	40
42	42	42	42	42	42	42	42	42	42	42
44	44	44	44	44	44	44	44	44	44	44
46	46	46	46	46	46	46	46	46	46	46
48	48	48	48	48	48	48	48	48	48	48
50	50	50	50	50	50	50	50	50	50	50
52	52	52	52	52	52	52	52	52	52	52
54	54	54	54	54	54	54	54	54	54	54
56	56	56	56	56	56	56	56	56	56	56
58	58	58	58	58	58	58	58	58	58	58
60	60	60	60	60	60	60	60	60	60	60
62	62	62	62	62	62	62	62	62	62	62
64	64	64	64	64	64	64	64	64	64	64
66	66	66	66	66	66	66	66	66	66	66
68	68	68	68	68	68	68	68	68	68	68
70	70	70	70	70	70	70	70	70	70	70
72	72	72	72	72	72	72	72	72	72	72
74	74	74	74	74	74	74	74	74	74	74
76	76	76	76	76	76	76	76	76	76	76
78	78	78	78	78	78	78	78	78	78	78

Notes: 1. The actual weight is value that the rated weight in this table is subtracted by the weights of the hoists, hangers, and wire rope lying on the hoists and on the boom head.
2. The rated load in this table is measured under the condition that the heavy object is lifted slowly and stably from the level and hard soil ground.

LUFFING JIB LOAD CHARTS

SCC2600A Luffing Jib Load Charts (Without Jib Head Pulley Block)

Unit: (t)

Jib length (m) Boomsig(°)	Boom length (m)									
	45	48	51	54	57	60	63	66	69	72
10	10	10	10	10	10	10	10	10	10	10
12	12	12	12	12	12	12	12	12	12	12
14	14	14	14	14	14	14	14	14	14	14
16	16	16	16	16	16	16	16	16	16	16
18	18	18	18	18	18	18	18	18	18	18
20	20	20	20	20	20	20	20	20	20	20
22	22	22	22	22	22	22	22	22	22	22
24	24	24	24	24	24	24	24	24	24	24
26	26	26	26	26	26	26	26	26	26	26
28	28	28	28	28	28	28	28	28	28	28
30	30	30	30	30	30	30	30	30	30	30
32	32	32	32	32	32	32	32	32	32	32
34	34	34	34	34	34	34	34	34	34	34
36	36	36	36	36	36	36	36	36	36	36
38	38	38	38	38	38	38	38	38	38	38
40	40	40	40	40	40	40	40	40	40	40
42	42	42	42	42	42	42	42	42	42	42
44	44	44	44	44	44	44	44	44	44	44
46	46	46	46	46	46	46	46	46	46	46
48	48	48	48	48	48	48	48	48	48	48
50	50	50	50	50	50	50	50	50	50	50
52	52	52	52	52	52	52	52	52	52	52
54	54	54	54	54	54	54	54	54	54	54
56	56	56	56	56	56	56	56	56	56	56
58	58	58	58	58	58	58	58	58	58	58
60	60	60	60	60	60	60	60	60	60	60
62	62	62	62	62	62	62	62	62	62	62
64	64	64	64	64	64	64	64	64	64	64
66	66	66	66	66	66	66	66	66	66	66
68	68	68	68	68	68	68	68	68	68	68
70	70	70	70	70	70	70	70	70	70	70
72	72	72	72	72	72	72	72	72	72	72
74	74	74	74	74	74	74	74	74	74	74
76	76	76	76	76	76	76	76	76	76	76
78	78	78	78	78	78	78	78	78	78	78

Notes: 1. The actual weight is value that the rated weight in this table is subtracted by the weights of the hoists, hangers, and wire rope lying on the hoists and on the boom head.
2. The rated load in this table is measured under the condition that the heavy object is lifted slowly and stably from the level and hard soil ground.

LUFFING JIB LOAD CHARTS

SCC2600A Luffing Jib Load Charts (Without Jib Head Pulley Block) Unit: (t)

Boom length (m) Jib length (m) Boom angle (°) Radius (m)	Boom height (m) Jib height (m) Boom angle (°) Radius (m)									
	21	24	27	30	33	36	39	42	45	48
10	72.0	71.5	69.3	66.3	62.8	58.8	54.3	49.3	43.8	37.8
12	72.0	71.5	69.3	66.3	62.8	58.8	54.3	49.3	43.8	37.8
14	72.6	69.3	66.3	63.3	60.3	56.8	52.8	48.3	43.3	37.8
16	64.4	61.4	58.4	55.4	52.4	48.9	44.9	40.4	35.4	30.4
18	57.8	55.0	52.0	49.0	46.0	42.5	38.5	34.5	30.5	26.5
20	52.4	49.9	47.0	44.0	41.0	37.5	33.5	29.5	25.5	21.5
22	48.0	45.5	42.5	39.5	36.5	33.0	29.0	25.0	21.0	17.0
24	44.4	41.9	38.9	35.9	32.9	29.4	25.4	21.4	17.4	13.4
26	38.9	36.6	33.6	30.6	27.6	24.1	20.1	16.1	12.1	8.1
28	33.0	30.2	27.2	24.2	21.2	17.7	13.7	9.7	5.7	1.7
30	26.4	24.0	21.0	18.0	15.0	11.5	7.5	3.5	-0.5	-4.5
32	24.8	22.6	19.6	16.6	13.6	10.1	6.1	2.1	-1.9	-5.9
34	24.8	22.6	19.6	16.6	13.6	10.1	6.1	2.1	-1.9	-5.9
36	21.2	18.9	15.9	12.9	9.9	6.4	2.4	-1.6	-5.6	-9.6
38	20.0	17.7	14.7	11.7	8.7	5.2	1.2	-2.8	-6.8	-10.8
40	18.9	17.7	14.7	11.7	8.7	5.2	1.2	-2.8	-6.8	-10.8
42	17.7	17.7	14.7	11.7	8.7	5.2	1.2	-2.8	-6.8	-10.8
44	16.5	16.5	13.5	10.5	7.5	4.0	0.0	-4.0	-8.0	-12.0
46	15.4	15.4	12.4	9.4	6.4	3.0	-1.0	-5.0	-9.0	-13.0
48	14.2	14.2	11.2	8.2	5.2	2.0	-2.0	-6.0	-10.0	-14.0
50	13.0	13.0	10.0	7.0	4.0	1.0	-3.0	-7.0	-11.0	-15.0
52	11.8	11.8	8.8	5.8	2.8	0.0	-4.0	-8.0	-12.0	-16.0
54	10.6	10.6	7.6	4.6	1.6	-1.0	-5.0	-9.0	-13.0	-17.0
56	9.4	9.4	6.4	3.4	0.4	-2.0	-6.0	-10.0	-14.0	-18.0
58	8.2	8.2	5.2	2.2	-0.8	-3.0	-7.0	-11.0	-15.0	-19.0
60	7.0	7.0	4.0	1.0	-1.8	-4.0	-8.0	-12.0	-16.0	-20.0
62	5.8	5.8	2.8	0.8	-2.8	-5.0	-9.0	-13.0	-17.0	-21.0
64	4.6	4.6	1.6	-0.4	-3.8	-6.0	-10.0	-14.0	-18.0	-22.0
66	3.4	3.4	0.4	-1.4	-4.8	-7.0	-11.0	-15.0	-19.0	-23.0
68	2.2	2.2	-0.6	-2.4	-5.8	-8.0	-12.0	-16.0	-20.0	-24.0

Notes: 1. The actual weight is value that the rated weight in this table subtracted by the weights of the hoists, hangers, and rope(s) on the hoist and on the boom head.
2. The rated load in this table is measured under the condition that the hoist(s) is lifted slowly and stably from the level and hard soil ground.

LUFFING JIB LOAD CHARTS

SCC2600A Luffing Jib Load Charts (Without Jib Head Pulley Block) Unit: (t)

Boom length (m) Jib length (m) Boom angle (°) Radius (m)	Boom height (m) Jib height (m) Boom angle (°) Radius (m)									
	33	36	39	42	45	48	51	54	57	60
10	72.0	71.5	69.3	66.3	62.8	58.8	54.3	49.3	43.8	37.8
12	72.0	71.5	69.3	66.3	62.8	58.8	54.3	49.3	43.8	37.8
14	53.6	48.9	44.1	39.3	34.5	29.7	24.9	20.1	15.3	10.5
16	52.7	48.2	43.4	38.6	33.8	29.0	24.2	19.4	14.6	9.8
18	51.8	47.5	42.7	37.9	33.1	28.3	23.5	18.7	13.9	9.1
20	49.1	46.0	41.2	36.4	31.6	26.9	22.2	17.5	12.8	8.0
22	44.8	42.6	37.8	32.9	28.2	23.9	19.6	15.5	11.4	7.0
24	41.2	39.2	34.4	30.0	25.7	21.4	17.4	13.4	9.4	5.4
26	38.2	36.3	32.4	28.0	23.8	19.8	15.8	11.8	7.8	3.8
28	35.6	33.7	30.8	26.0	21.8	18.2	14.2	10.2	6.2	2.2
30	33.2	31.5	28.2	23.7	19.7	16.1	12.1	8.1	4.1	0.1
32	31.1	29.5	26.8	22.4	18.3	14.6	10.6	6.6	2.6	-1.4
34	29.3	27.7	25.2	22.9	18.2	14.5	10.5	6.5	2.5	-1.5
36	24.9	23.8	21.5	19.0	15.7	12.4	8.4	4.4	0.4	-3.6
38	24.8	22.4	20.3	18.3	14.2	11.1	7.1	3.1	-0.9	-4.9
40	21.2	19.2	17.3	15.4	12.4	9.4	5.4	1.4	-2.6	-6.6
42	20.3	18.2	16.3	14.4	11.4	8.4	4.4	0.4	-3.6	-7.6
44	17.3	15.3	13.4	11.4	8.4	5.4	1.4	-2.6	-6.6	-9.6
46	16.4	14.7	13.0	11.0	8.0	5.0	1.0	-3.0	-7.0	-10.0
48	14.0	13.7	12.0	10.0	7.0	4.0	0.0	-4.0	-8.0	-11.0
50	13.1	13.0	11.0	9.0	6.0	3.0	0.0	-4.0	-8.0	-11.0
52	12.3	12.2	10.0	8.0	5.0	2.0	0.0	-4.0	-8.0	-11.0
54	11.6	11.6	9.0	7.0	4.0	1.0	0.0	-4.0	-8.0	-11.0
56	10.8	10.8	8.0	6.0	3.0	0.0	0.0	-4.0	-8.0	-11.0
58	9.2	9.2	7.0	5.0	2.0	0.0	0.0	-4.0	-8.0	-11.0
60	8.2	8.2	6.0	4.0	1.0	0.0	0.0	-4.0	-8.0	-11.0
62	7.0	7.0	5.0	3.0	0.0	0.0	0.0	-4.0	-8.0	-11.0
64	5.8	5.8	4.0	2.0	0.0	0.0	0.0	-4.0	-8.0	-11.0
66	4.6	4.6	3.0	1.0	0.0	0.0	0.0	-4.0	-8.0	-11.0
68	3.4	3.4	2.0	0.0	0.0	0.0	0.0	-4.0	-8.0	-11.0

Notes: 1. The actual weight is value that the rated weight in this table subtracted by the weights of the hoists, hangers, and rope(s) on the hoist and on the boom head.
2. The rated load in this table is measured under the condition that the hoist(s) is lifted slowly and stably from the level and hard soil ground.

LUFFING JIB LOAD CHARTS

SCC2600A Luffing Jib Load Charts (Without Jib Head Pulley Block)

Unit: (t)

Jib length (m) Boom length (m) Radius (m)	Jib length (m)												
	45	50	54	58	62	66	70	74	78	82	86	90	
10													
12													
14													
16													
18	36.5	33.3	30.5										
20	36.0	32.9	30.2	25.7									
22	35.6	32.7	29.9	25.5	22.2								
24	35.3	32.4	29.6	25.5	22.1	20.0							
26	34.9	32.0	29.3	24.9	24.8	22.6	20.0						
28	34.3	31.5	28.1	24.0	24.6	22.4	20.0						
30	34.1	31.4	28.0	23.8	24.4	22.4	20.0						
32	33.7	31.1	28.2	23.6	24.4	22.4	20.0						
34	33.4	30.8	28.0	23.5	24.4	22.4	20.0						
36	33.0	30.4	27.9	23.4	24.4	22.4	20.0						
38	32.6	30.0	27.8	23.3	24.4	22.4	20.0						
40	32.2	29.6	27.7	23.2	24.4	22.4	20.0						
42	31.8	29.2	27.6	23.1	24.4	22.4	20.0						
44	31.4	28.8	27.5	23.0	24.4	22.4	20.0						
46	31.0	28.4	27.4	22.9	24.4	22.4	20.0						
48	30.6	28.0	27.3	22.8	24.4	22.4	20.0						
50	30.2	27.6	27.2	22.7	24.4	22.4	20.0						
52	29.8	27.2	27.1	22.6	24.4	22.4	20.0						
54	29.4	26.8	27.0	22.5	24.4	22.4	20.0						
56	29.0	26.4	26.9	22.4	24.4	22.4	20.0						
58	28.6	26.0	26.8	22.3	24.4	22.4	20.0						
60	28.2	25.6	26.7	22.2	24.4	22.4	20.0						
62	27.8	25.2	26.6	22.1	24.4	22.4	20.0						
64	27.4	24.8	26.5	22.0	24.4	22.4	20.0						
66	27.0	24.4	26.4	21.9	24.4	22.4	20.0						
68	26.6	24.0	26.3	21.8	24.4	22.4	20.0						
70	26.2	23.6	26.2	21.7	24.4	22.4	20.0						
72	25.8	23.2	26.1	21.6	24.4	22.4	20.0						
74	25.4	22.8	26.0	21.5	24.4	22.4	20.0						

Notes: 1. The actual weight is a value that the rated weight in this table is subtracted by the weight of the hooks, luffers, and wire ropes winding on the hooks and on the boom head.
2. The rated load in this table is measured under the condition that the heavy object is lifted slowly and stably from the level and solid ground.

LUFFING JIB LOAD CHARTS

SCC2600A Luffing Jib Load Charts (Without Jib Head Pulley Block)

Unit: (t)

Jib length (m) Boom length (m) Radius (m)	Jib length (m)												
	45	50	54	58	62	66	70	74	78	82	86	90	
10													
12													
14													
16													
18	36.5	33.3	30.5										
20	36.0	32.9	30.2	25.7									
22	35.6	32.7	29.9	25.5	22.2								
24	35.3	32.4	29.6	25.5	22.1	20.0							
26	34.9	32.0	29.3	24.9	24.8	22.6	20.0						
28	34.3	31.5	28.1	24.0	24.6	22.4	20.0						
30	34.1	31.4	28.0	23.8	24.4	22.4	20.0						
32	33.7	31.1	28.2	23.6	24.4	22.4	20.0						
34	33.4	30.8	28.0	23.5	24.4	22.4	20.0						
36	33.0	30.4	27.9	23.4	24.4	22.4	20.0						
38	32.6	30.0	27.8	23.3	24.4	22.4	20.0						
40	32.2	29.6	27.7	23.2	24.4	22.4	20.0						
42	31.8	29.2	27.6	23.1	24.4	22.4	20.0						
44	31.4	28.8	27.5	23.0	24.4	22.4	20.0						
46	31.0	28.4	27.4	22.9	24.4	22.4	20.0						
48	30.6	28.0	27.3	22.8	24.4	22.4	20.0						
50	30.2	27.6	27.2	22.7	24.4	22.4	20.0						
52	29.8	27.2	27.1	22.6	24.4	22.4	20.0						
54	29.4	26.8	27.0	22.5	24.4	22.4	20.0						
56	29.0	26.4	26.9	22.4	24.4	22.4	20.0						
58	28.6	26.0	26.8	22.3	24.4	22.4	20.0						
60	28.2	25.6	26.7	22.2	24.4	22.4	20.0						
62	27.8	25.2	26.6	22.1	24.4	22.4	20.0						
64	27.4	24.8	26.5	22.0	24.4	22.4	20.0						
66	27.0	24.4	26.4	21.9	24.4	22.4	20.0						
68	26.6	24.0	26.3	21.8	24.4	22.4	20.0						
70	26.2	23.6	26.2	21.7	24.4	22.4	20.0						
72	25.8	23.2	26.1	21.6	24.4	22.4	20.0						
74	25.4	22.8	26.0	21.5	24.4	22.4	20.0						

Notes: 1. The actual weight is a value that the rated weight in this table is subtracted by the weight of the hooks, luffers, and wire ropes winding on the hooks and on the boom head.
2. The rated load in this table is measured under the condition that the heavy object is lifted slowly and stably from the level and solid ground.

LUFFING JIB LOAD CHARTS

SCC2600A Luffing Jib Load Charts (Without Jib Head Pulley Block)

Unit: (t)

Boom length (m) Jib length (m) Radius	62									
	45	50	55	60	65	70	75	80	85	90
20	30.5	28.4	26.4	24.4	22.4	20.4	18.4	16.4	14.4	12.4
22	29.6	27.6	25.6	23.6	21.6	19.6	17.6	15.6	13.6	11.6
24	28.2	26.2	24.2	22.2	20.2	18.2	16.2	14.2	12.2	10.2
26	26.6	24.6	22.6	20.6	18.6	16.6	14.6	12.6	10.6	8.6
28	24.8	22.8	20.8	18.8	16.8	14.8	12.8	10.8	8.8	6.8
30	22.8	20.8	18.8	16.8	14.8	12.8	10.8	8.8	6.8	4.8
32	20.6	18.6	16.6	14.6	12.6	10.6	8.6	6.6	4.6	2.6
34	18.2	16.2	14.2	12.2	10.2	8.2	6.2	4.2	2.2	0.2
36	15.7	13.7	11.7	9.7	7.7	5.7	3.7	1.7	-0.3	-2.3
38	13.1	11.1	9.1	7.1	5.1	3.1	1.1	-0.9	-2.9	-4.9
40	10.4	8.4	6.4	4.4	2.4	0.4	-1.6	-3.6	-5.6	-7.6
42	7.6	5.6	3.6	1.6	-0.4	-2.4	-4.4	-6.4	-8.4	-10.4
44	4.7	2.7	0.7	-1.3	-3.3	-5.3	-7.3	-9.3	-11.3	-13.3
46	1.7	-0.3	-2.3	-4.3	-6.3	-8.3	-10.3	-12.3	-14.3	-16.3
48	-1.3	-3.3	-5.3	-7.3	-9.3	-11.3	-13.3	-15.3	-17.3	-19.3
50	-4.3	-6.3	-8.3	-10.3	-12.3	-14.3	-16.3	-18.3	-20.3	-22.3
52	-7.3	-9.3	-11.3	-13.3	-15.3	-17.3	-19.3	-21.3	-23.3	-25.3
54	-10.3	-12.3	-14.3	-16.3	-18.3	-20.3	-22.3	-24.3	-26.3	-28.3
56	-13.3	-15.3	-17.3	-19.3	-21.3	-23.3	-25.3	-27.3	-29.3	-31.3
58	-16.3	-18.3	-20.3	-22.3	-24.3	-26.3	-28.3	-30.3	-32.3	-34.3
60	-19.3	-21.3	-23.3	-25.3	-27.3	-29.3	-31.3	-33.3	-35.3	-37.3
62	-22.3	-24.3	-26.3	-28.3	-30.3	-32.3	-34.3	-36.3	-38.3	-40.3
64	-25.3	-27.3	-29.3	-31.3	-33.3	-35.3	-37.3	-39.3	-41.3	-43.3
66	-28.3	-30.3	-32.3	-34.3	-36.3	-38.3	-40.3	-42.3	-44.3	-46.3
68	-31.3	-33.3	-35.3	-37.3	-39.3	-41.3	-43.3	-45.3	-47.3	-49.3
70	-34.3	-36.3	-38.3	-40.3	-42.3	-44.3	-46.3	-48.3	-50.3	-52.3
72	-37.3	-39.3	-41.3	-43.3	-45.3	-47.3	-49.3	-51.3	-53.3	-55.3
74	-40.3	-42.3	-44.3	-46.3	-48.3	-50.3	-52.3	-54.3	-56.3	-58.3
76	-43.3	-45.3	-47.3	-49.3	-51.3	-53.3	-55.3	-57.3	-59.3	-61.3
78	-46.3	-48.3	-50.3	-52.3	-54.3	-56.3	-58.3	-60.3	-62.3	-64.3
80	-49.3	-51.3	-53.3	-55.3	-57.3	-59.3	-61.3	-63.3	-65.3	-67.3
82	-52.3	-54.3	-56.3	-58.3	-60.3	-62.3	-64.3	-66.3	-68.3	-70.3
84	-55.3	-57.3	-59.3	-61.3	-63.3	-65.3	-67.3	-69.3	-71.3	-73.3

Notes: 1. The actual weight is a value that the rated weight in this table is subtracted by the weights of the hooks, luffers, and wire ropes winding on the hooks and on the boom head.
2. The rated load in this table is measured under the condition that the heavy object is lifted slowly and stably from the level and hard ground.

LUFFING JIB LOAD CHARTS

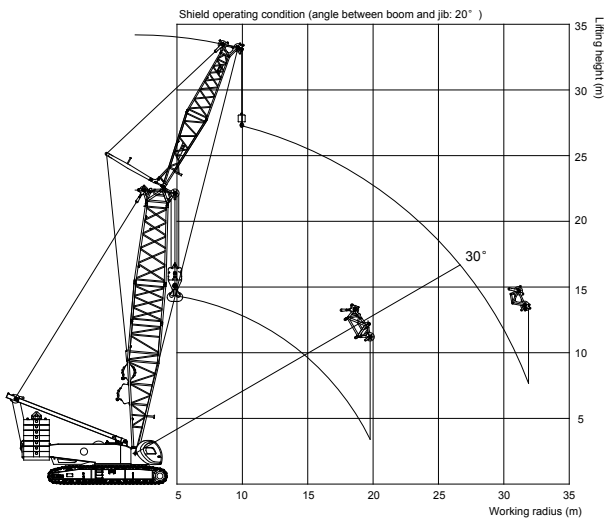
SCC2600A Luffing Jib Load Charts (Without Jib Head Pulley Block)

Unit: (t)

Boom length (m) Jib length (m) Radius	62									
	45	50	55	60	65	70	75	80	85	90
20	22.4	20.3	18.3	16.3	14.3	12.3	10.3	8.3	6.3	4.3
22	21.1	19.1	17.1	15.1	13.1	11.1	9.1	7.1	5.1	3.1
24	19.9	17.9	15.9	13.9	11.9	9.9	7.9	5.9	3.9	1.9
26	18.8	16.8	14.8	12.8	10.8	8.8	6.8	4.8	2.8	0.8
28	17.8	15.8	13.8	11.8	9.8	7.8	5.8	3.8	1.8	-0.2
30	16.8	14.8	12.8	10.8	8.8	6.8	4.8	2.8	0.8	-1.2
32	15.8	13.8	11.8	9.8	7.8	5.8	3.8	1.8	-0.2	-2.2
34	14.8	12.8	10.8	8.8	6.8	4.8	2.8	0.8	-1.2	-3.2
36	13.8	11.8	9.8	7.8	5.8	3.8	1.8	-0.2	-2.2	-4.2
38	12.8	10.8	8.8	6.8	4.8	2.8	0.8	-1.2	-3.2	-5.2
40	11.8	9.8	7.8	5.8	3.8	1.8	-0.2	-2.2	-3.2	-6.2
42	10.8	8.8	6.8	4.8	2.8	0.8	-1.2	-3.2	-4.2	-7.2
44	9.8	7.8	5.8	3.8	1.8	-0.2	-2.2	-3.2	-4.2	-8.2
46	8.8	6.8	4.8	2.8	0.8	-1.2	-3.2	-4.2	-5.2	-9.2
48	7.8	5.8	3.8	1.8	-0.2	-2.2	-3.2	-4.2	-5.2	-10.2
50	6.8	4.8	2.8	0.8	-1.2	-3.2	-4.2	-5.2	-6.2	-11.2
52	5.8	3.8	1.8	-0.2	-2.2	-3.2	-4.2	-5.2	-6.2	-12.2
54	4.8	2.8	0.8	-1.2	-3.2	-4.2	-5.2	-6.2	-7.2	-13.2
56	3.8	1.8	-0.2	-2.2	-3.2	-4.2	-5.2	-6.2	-7.2	-14.2
58	2.8	0.8	-1.2	-3.2	-4.2	-5.2	-6.2	-7.2	-8.2	-15.2
60	1.8	-0.2	-2.2	-3.2	-4.2	-5.2	-6.2	-7.2	-8.2	-16.2
62	0.8	-1.2	-3.2	-4.2	-5.2	-6.2	-7.2	-8.2	-9.2	-17.2
64	-0.2	-2.2	-3.2	-4.2	-5.2	-6.2	-7.2	-8.2	-9.2	-18.2
66	-1.2	-3.2	-4.2	-5.2	-6.2	-7.2	-8.2	-9.2	-10.2	-19.2
68	-2.2	-4.2	-5.2	-6.2	-7.2	-8.2	-9.2	-10.2	-11.2	-20.2
70	-3.2	-5.2	-6.2	-7.2	-8.2	-9.2	-10.2	-11.2	-12.2	-21.2
72	-4.2	-6.2	-7.2	-8.2	-9.2	-10.2	-11.2	-12.2	-13.2	-22.2
74	-5.2	-7.2	-8.2	-9.2	-10.2	-11.2	-12.2	-13.2	-14.2	-23.2
76	-6.2	-8.2	-9.2	-10.2	-11.2	-12.2	-13.2	-14.2	-15.2	-24.2
78	-7.2	-9.2	-10.2	-11.2	-12.2	-13.2	-14.2	-15.2	-16.2	-25.2
80	-8.2	-10.2	-11.2	-12.2	-13.2	-14.2	-15.2	-16.2	-17.2	-26.2
82	-9.2	-11.2	-12.2	-13.2	-14.2	-15.2	-16.2	-17.2	-18.2	-27.2
84	-10.2	-12.2	-13.2	-14.2	-15.2	-16.2	-17.2	-18.2	-19.2	-28.2

Notes: 1. The actual weight is a value that the rated weight in this table is subtracted by the weights of the hooks, luffers, and wire ropes winding on the hooks and on the boom head.
2. The rated load in this table is measured under the condition that the heavy object is lifted slowly and stably from the level and hard ground.

SHIELD OPERATING CONDITION LOAD CHARTS



SHIELD OPERATING CONDITION LOAD CHARTS

SCC2600A Crawler Crane Shield Operating Condition

Radius(m)	Boom 20m Jib 12m	
	Main hook load value (without load on the auxiliary hook)	Auxiliary hook load value (without load on the main hook)
5	249	
6	227	
7	190	
8	174	
9	150	
10	140	96
12	106	88
14	82	74
16	66	62.8
18	52.5	53.4
20	19/49	48.2
22		40.4
24		35.8
26		31.9
28		28.6
30		25.8

Notes: 1. The actual weight is a value that the rated weight in this table is subtracted by the weights of the hooks, hangers, and wire ropes winding on the hooks and on the boom head.
 2. The rated load in this table is measured under the condition that the heavy object is lifted slowly, stably from the level and hard soil ground.



Quality Changes the World

SANY HEAVY INDUSTRY CO., LTD.

Address: SANY Industrial Park, No. 8 Beiqing Road,
Huilongguan Town, Changping District, Beijing
Service Hotline: +0086-4006-098-318

Email: crd@sany.com.cn

For more information, please visit: www.sanygroup.com

B0552ENAN1-SCC2600A

For our consistent improvement in technology, specifications may change without notice.
The machines illustrated may show optional equipment which can be supplied at additional cost.

Version:2015.10