



Technical Information

Fork Lift Trucks

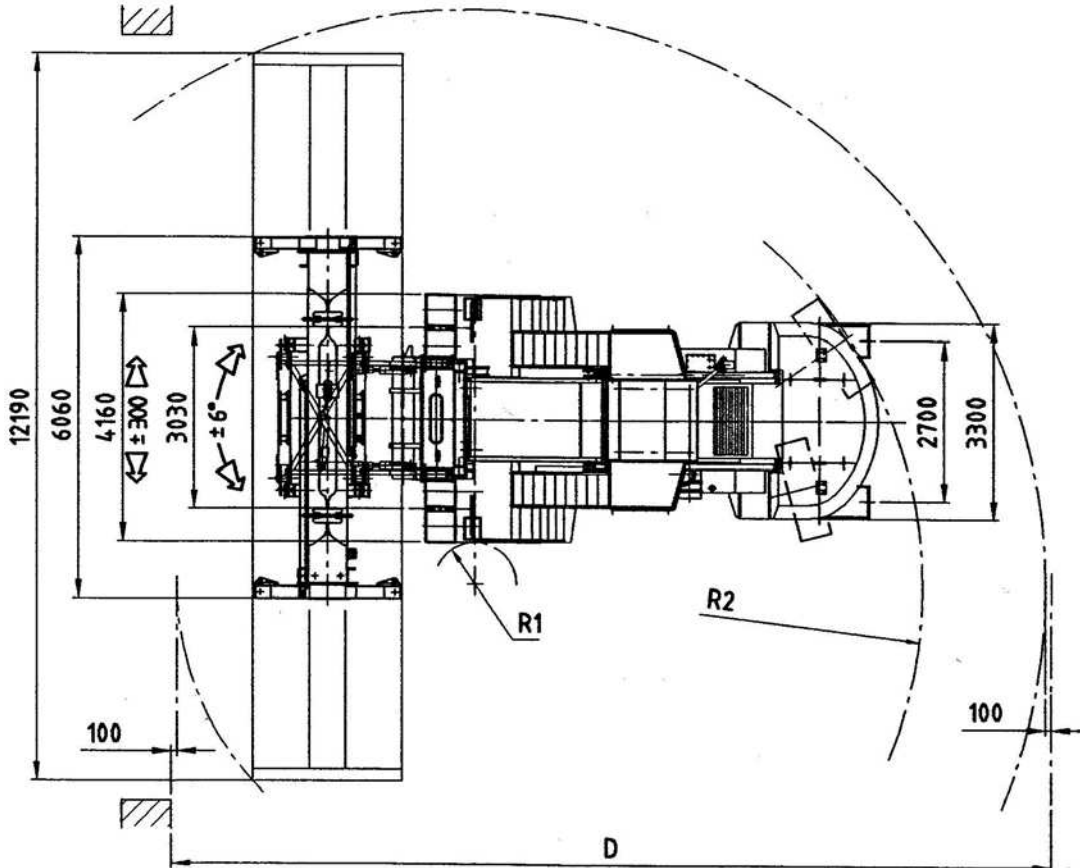
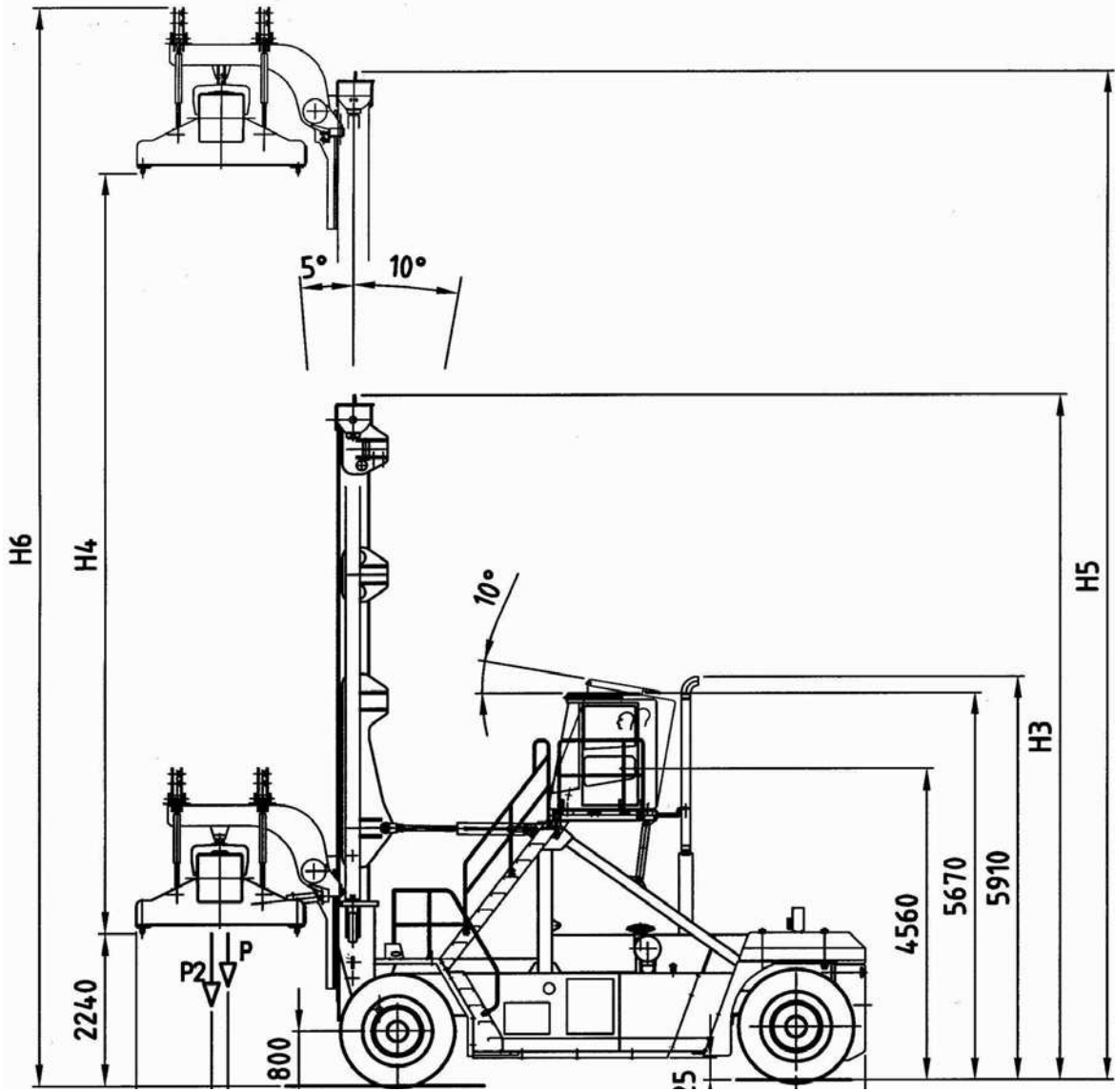
CVS FERRARI

F 42G4 – F 42G5

F 45G4 – F 45G5 – F 45G6

SPECIFICATION	01 Manufacturer				CVS FERRARI	CVS FERRARI			
	02 Model				F 42 G4	F 42 G5			
DIMENSIONS	03 Lifting capacity				kg	36000	36000		
	04 Load Centre				From center of front axle	P1	mm	2600	2600
	14 Overall dimensions				Length with spreader	L	mm	10115	10115
	15				Width		mm	4160	4160
	16				Mast height, min.	H 3	mm	8650	10050
	17				Mast height, max	H 6	mm	13650	16450
	18				Height, max	H 5	mm	14440	17240
	19				Height		mm	5670	5670
	20				Seat height		mm	4560	4560
	21				Min. dist. spreader from ground		mm	2240	2240
	DRIVING SYSTEM	43 Engine				Manufacturer - Type		CUMMINS QSM11	
44				Rating		kW/(hp)	250/(320)	250/(320)	
45				Rated Speed		RPM	1400-2100	1400-2100	
46				Peak Torque - at engine speed		Nm/min	1600/1400	1600/1400	
47				Number Cylinders - swept volume		cm ³	6/10820	6/10820	
53 Clutch				Clutch type		Torque converter			
54 Hydraulic pressure				For attachments		bar	140	140	
55 Sound Level				Inside Cabine (DIN45635)		dB(A)	75	75	

SPECIFICATION	01 Manufacturer				CVS FERRARI	CVS FERRARI	CVS FERRARI			
	02 Model				F 45 G4	F 45 G5	F 45 G6			
DIMENSIONS	03 Lifting capacity				kg	40000	40000	40000kg upto H4= 12800 mm 38000kg over H4= 12800 mm		
	04 Load Centre				From center of front axle	P1	mm	2600	2600	2600
	14 Overall dimensions				Length	L	mm	10615	10615	10615
	15				Width		mm	4160	4160	4160
	16				Mast height, min.	H 3	mm	8650	10050	10600
	17				Mast height, max	H 5	mm	13650	16450	17550
	18				Height, max	H 6	mm	14440	17240	18340
	19				Height		mm	5670	5670	5670
	20				Seat height		mm	4560	4560	4560
	21				Min. dist. spreader from ground		mm	2240	2240	2240
	DRIVING SYSTEM	43 Engine				Manufacturer - Type		CUMMINS QSM11		
44				Rating		kW/(hp)	250/(320)	250/(320)	250/(320)	
45				Rated Speed		RPM	1400-2100	1400-2100	1400-2100	
46				Peak Torque - at engine speed		Nm/min	1600/1400	1600/1400	1600/1400	
47				Nr. Cylinders - swept volume		cm ³	6/10820	6/10820	6/10820	
53 Clutch				Clutch type		Torque converter				
54 Hydraulic pressure				For attachments		bar	140	140	140	
55 Sound Level				Inside cabin			EN12053	EN12053	EN12053	



CHASSIS

All welded box type. Torsion resistant structure. Low center of gravity.

ENGINE

CUMMINS QSM11.

Euro mot step 3. Best performances and lowest fuel consumption. Low polluting level.

TRANSMISSION

CLARK 36000

Integrated torque converter and power shift - 4 Speeds forward and 4 speeds reverse

FRONT AXLE

Extra wide front axle for maximum stability. Hub reduction. Wet disc brakes. Oil cooling. Extra heavy duty type.

REAR AXLE

Articulating axle with double acting single cylinder. Full hydrostatic steering system (Orbitrol).

HYDRAULIC SYSTEM

Powerful. Reliable. 2 variable displacement pumps with load sensing system controlling: lifting, tilting, steering, forks positioning and side shifting. Joy stick for mast and spreader control.

ELECTRICAL SYSTEM

The most reliable and easy to service. 24 V. - Two 12 V. batteries of low maintenance type. High performance alternator.

Electric/electronic control of the machine based on CAN BUS technology.

MAST

High torsion. High quality steel. Free visibility. Heavy duty bearings. Lift cylinders hoses and chains located on the blind angles.

SPREADER:

High quality steel, highest strength. Compact and precise. Telescoping from 20' to 40'. All functions controlled from cab. Side mechanical tilting. Safety sensors on four corners. Gantry-spreader system.

The illustrations and data contained in this brochure are not binding. The manufacturer reserves the right to make changes for any reason while not altering the primary specifications



CVS FERRARI S.r.l. - Via Emilia - 29010 Roveleto di Cadeo (PC) ITALY
Tel. ++39.0523.503511 - Fax ++39.0523.500439
E-mail: info.mktg@cvsferrari.com

Distributed & Serviced by:

Rev. 01/10