



# Technical Information

## Reach Stackers

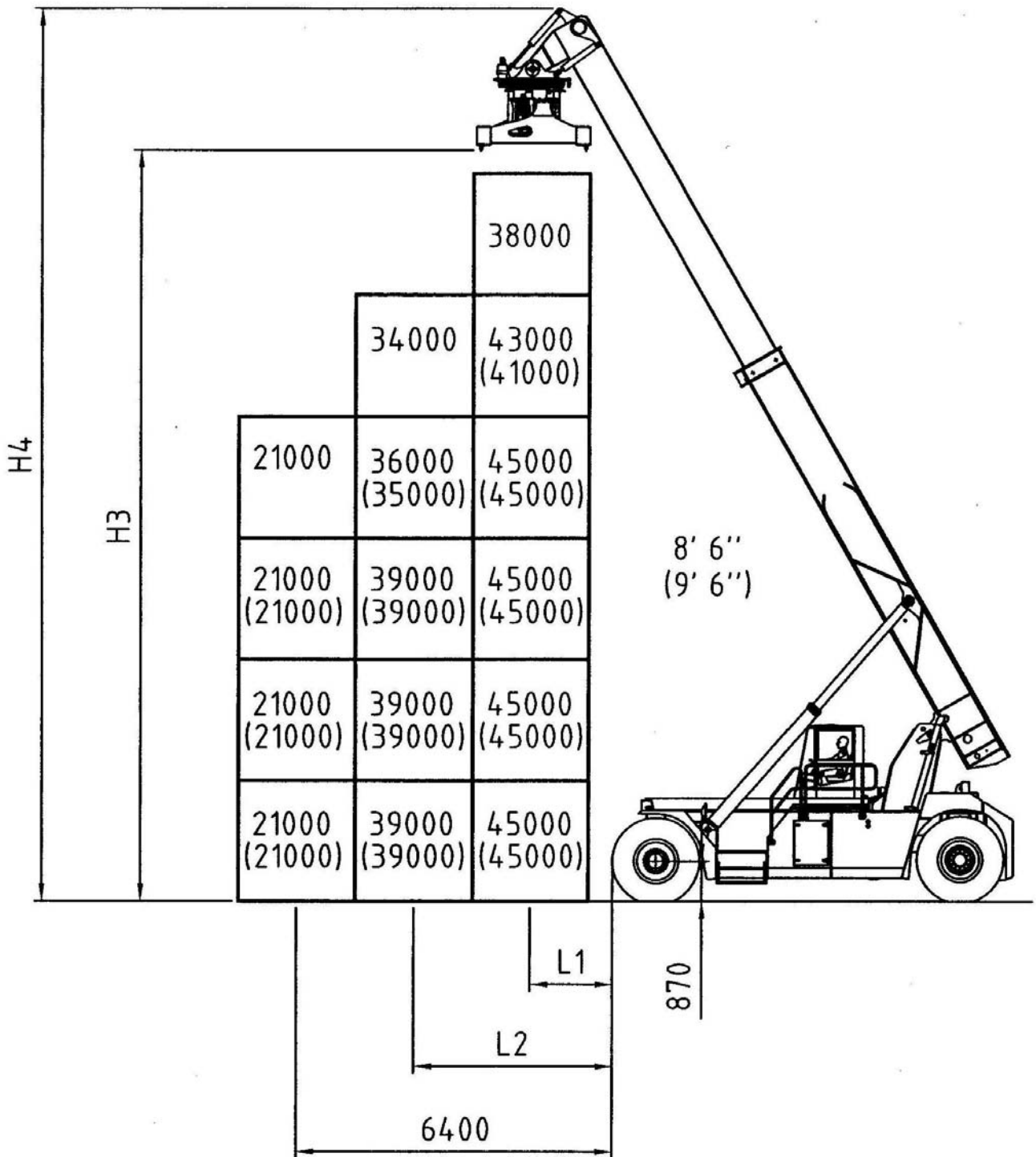
**CVS FERRARI**

**F 479**

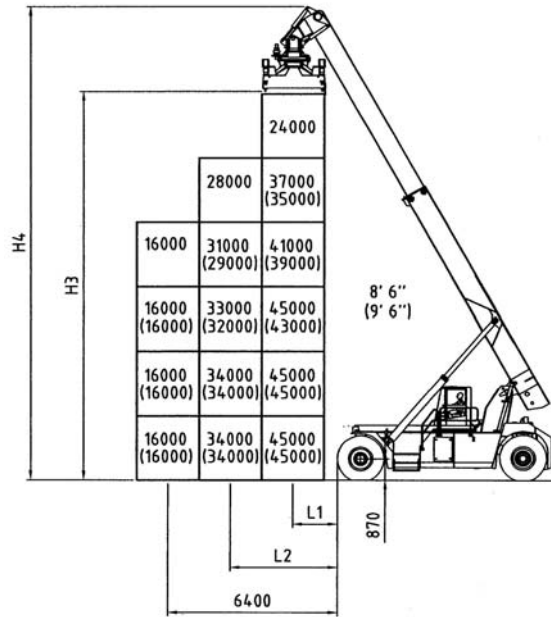
<b>SPECIFICATION</b>	<b>01 Manufacturer</b>				CVS FERRARI	CVS FERRARI
	<b>02 Model</b>				<b>F 479</b>	<b>F 479 PB</b>
	<b>03 Lifting capacity</b>	First Row/Second Row		Kg.	45000/39000	45000/34000
	<b>03 Lifting capacity</b>	under spreader + Piggy Back		Kg.	45000	45000
	<b>04 Load Center</b>	First Row/Second Row	L1/L2	mm.	1780/3850	1780/3850
	<b>05 Power unit</b>				Diesel engine	Diesel engine
	<b>06 Steering</b>				Steering wheel in the cab	Steering wheel in the cab
	<b>07 Tyre type</b>	Front / Rear			Pneumatic	Pneumatic
<b>08 Wheels</b>	Number at Front/Rear (*=driven)			4*/2	4* / 2	
<b>DIMENSIONS</b>	<b>09 Lifting Height</b>	Under Spreader - First Row	H3	mm.	16060	15730
	<b>10 Width of Spreader</b>	20 Ft.		mm.	6052	6052
		40 Ft.		mm.	12148	12148
	<b>11 Side Tilting</b>			Deg.	± 3 mechanical	± 4 hydraulical
	<b>12 Rotation</b>	Hydraulical		Deg.	-95+185	-95 + 185
	<b>13 Side shifter</b>	Max		mm.	± 800	± 800
	<b>14 Boom Angle</b>	Min / Max		Deg.	0 / 59	0 / 59
	<b>15 Overall dimensions</b>	Length without boom		mm.	8560	8560
		Length with spreader	L	mm	11990	12015
	<b>16</b>	Width	B	mm.	4184	4184
	<b>17</b>	Boom height, Min.	H1	mm.	4910	4910
	<b>18</b>	Boom height, Max	H4	mm.	19130	19200
	<b>19</b>	Height - Top of Cab	H5	mm.	3884	3884
<b>20</b>	Seat height	H	mm.	2780	2780	
<b>21 Turning radius</b>	Inner/Outer	R2/R1	mm.	980 / 8390	980 / 8390	
<b>22 Aisle for 90° stacking</b>	Incl. 200 mm. safety margin 20' 40'		mm.	9810 / 12710	9810 / 12710	
<b>PERFORMANCE</b>	<b>Stability (static)</b>			EN 1459	EN 1459	
	<b>23 Speeds</b>	Travelling F. & R. Laden/Unladen		km/h	21,3 / 24,6	21,3 / 24,6
	<b>24</b>	Lifting : max / zero load (with booster*)	m/s	M/s	0,25 / 0,34 (0,42)	0,25 / 0,34 (0,42)
	<b>25</b>	Lowering Laden/Unladen		M/s	0,27 / 0,34	0,27 / 0,34
	<b>26 Drawbar pull</b>	Max - Laden		kN	302,89	302,89
	<b>27 Gradeability</b>	Max at 0 km /h - Laden		%	22	22
<b>WEIGHTS</b>	<b>28 Gross vehicle weight</b>			Kg.	78800	84900
	<b>29 Axle load - Front</b>	Unladen		Kg.	35900	44500
		Laden		Kg.	99700	108300
	<b>30 Axle load - Rear</b>	Unladen		Kg.	42900	40400
Laden			Kg.	24100	21500	
<b>TYRES BRAKES CHASSIS</b>	<b>31 Tyres</b>	Number - Front/rear			4/2	4/2
	<b>32</b>	Size - Front			18.00-33	18.00-33
	<b>33</b>	Size - Rear			18.00-33	18.00-33
	<b>34 Wheelbase</b>		L3	mm.	6500	6500
	<b>35 Track Front</b>	Between centres - driven wheels		mm.	3033	3033
	<b>36 Track Rear</b>	Between centres - steering wheels		mm.	2820	2820
	<b>37 Ground clearance</b>	Mid-way along the wheelbase		mm.	420	420
	<b>38 Foot brake system</b>	Type/brake wheels			Wet disc brake / Driven Wheel	
	<b>39 Parking brake</b>	Type/brake wheels			Spring brakes / Driven wheel	
<b>STEERING SYSTEM</b>	<b>Type</b>			Hydrostatic		
<b>DRIVING SYSTEM</b>	<b>40 Engine</b>	Manufacturer - Type			CUMMINS QSM11	
	<b>41</b>	Rating - DIN 6271		kW/(hp)	250 (335)	250 (335)
	<b>42</b>	Rated Speed		RPM	2100	2100
	<b>43</b>	Peak Torque - at engine speed		Nm/RPM	1674 / 1000	1674 / 1000
	<b>44</b>	Number Cylinders - swept volume		cm3	6 / 10800	6 / 10800
	<b>45</b>	Compression Ratio			16.3:1	16.3:1
	<b>46</b>	Fuel Consumption (Average)		l/h	12 - 15	12 - 15
	<b>47 Alternator</b>	Type - Rating		A	100 A	100 A
	<b>48 Starting Batteries</b>	Voltage - Capacity		V/Ah	2x12 V -200 Ah	2x12 V -200 Ah
	<b>49 Drive Axle</b>	Type			With double reduction	
	<b>50 Gear Box</b>	Type-number of gears forwar/rev.			Clark - 4/4	Clark - 4/4
	<b>51 Clutch</b>	Clutch type			Torque converter	
		<b>52 Hydraulic pressure</b>	For attachments		Bar	140
<b>53 Sound Level</b>		Inside Cabine - According to			EN 12053	EN 12053

\* Booster option

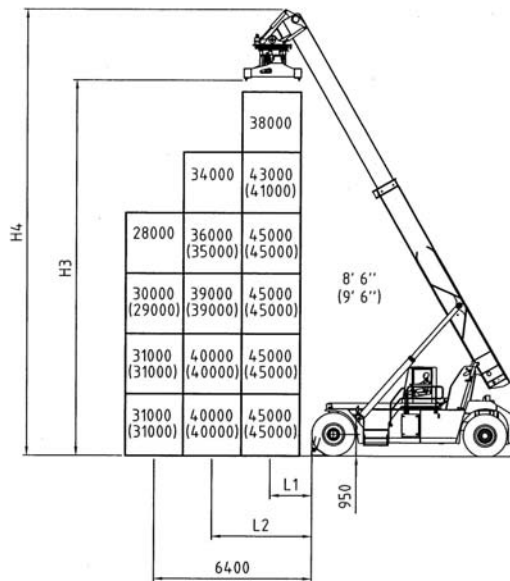
# Ferrari mod. F 479



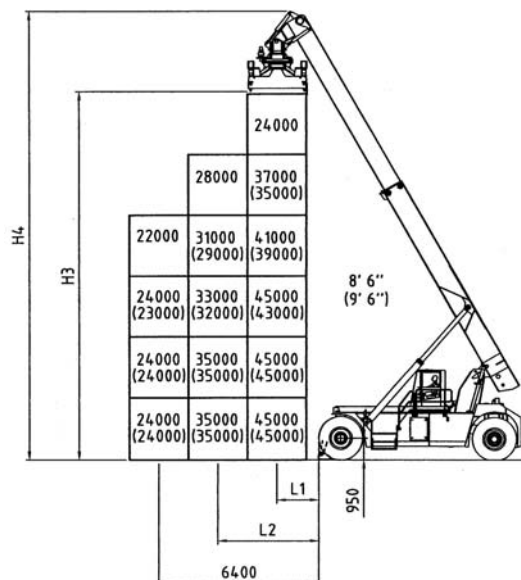
## Ferrari mod. F 479PB (with Piggy Back)

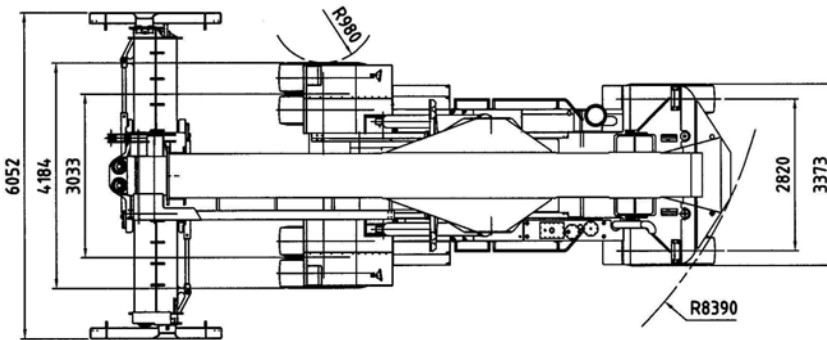
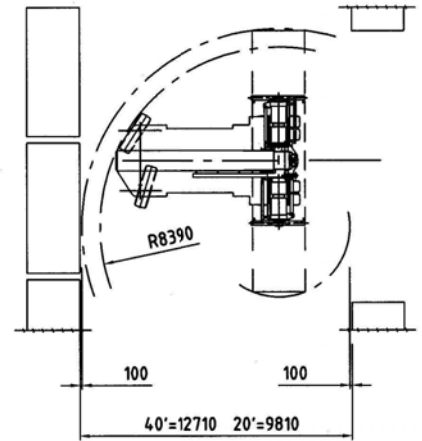
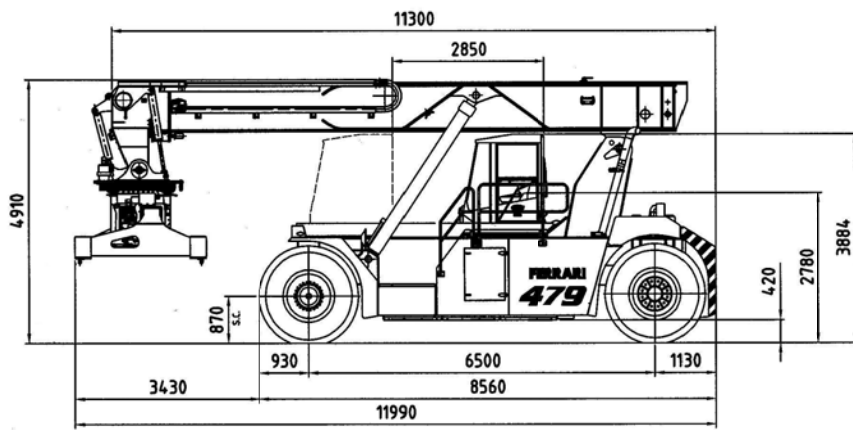


## Ferrari mod. F 479 S (with stabilizers down)



## Ferrari mod. F 479 PBS (with Piggy Back and stabilizers down)





**CHASSIS**

All welded box type. Torsion resistant structure. Low center of gravity.

**ENGINE**

CUMMINS QSM11.  
Euromot step 3. Best performances and lowest fuel consumption. Low polluting level.

**TRANSMISSION**

CLARK TE 32 - Integrated torque converter and power shift - 4 Speeds forward and 4 speeds reverse.

**FRONT AXLE**

Extra wide front axle for maximum stability. Hub reduction. Wet disc brake. Oil cooling. Extra heavy duty type.

**REAR AXLE**

Articulating axle with double acting single cylinder. Rubber shock absorbers. Full hydrostatic steering system (Orbitrol) with priority valve.

**HYDRAULIC SYSTEM**

Variable displacement pumps. Load sensing proportional distributor controlling telescoping and lifting. Anti-saturation LUDV system. Electrical multifunctional joystick. Oil cooling system.

**ELECTRICAL SYSTEM**

Modular system with diagnostic capability. Reliable and easy to service. 24V. - Two 12V. batteries of low maintenance type. Electric/electronic control of the machine based on CAN BUS technology.

**BOOM**

High torsion - High quality steel. One basic outer section and one inner telescopic section.

**SPREADER:**

Highest strength steel. Compact and precise. Telescoping from 20' to 40'. All functions controlled from cab. Side mechanical tilting. Damping cylinders. Safety sensors on four corners.

The illustrations and data contained in this brochure are not binding. The manufacturer reserves the right to make changes for any reason while not altering the primary specifications



CVS FERRARI S.r.l. - Via Emilia - 29010 Roveleto di Cadeo (PC) ITALY  
Tel. ++39.0523.503511 - Fax ++39.0523.500439  
E-mail: info.mktg@cvsferrari.com

*Distributed & Serviced by:*