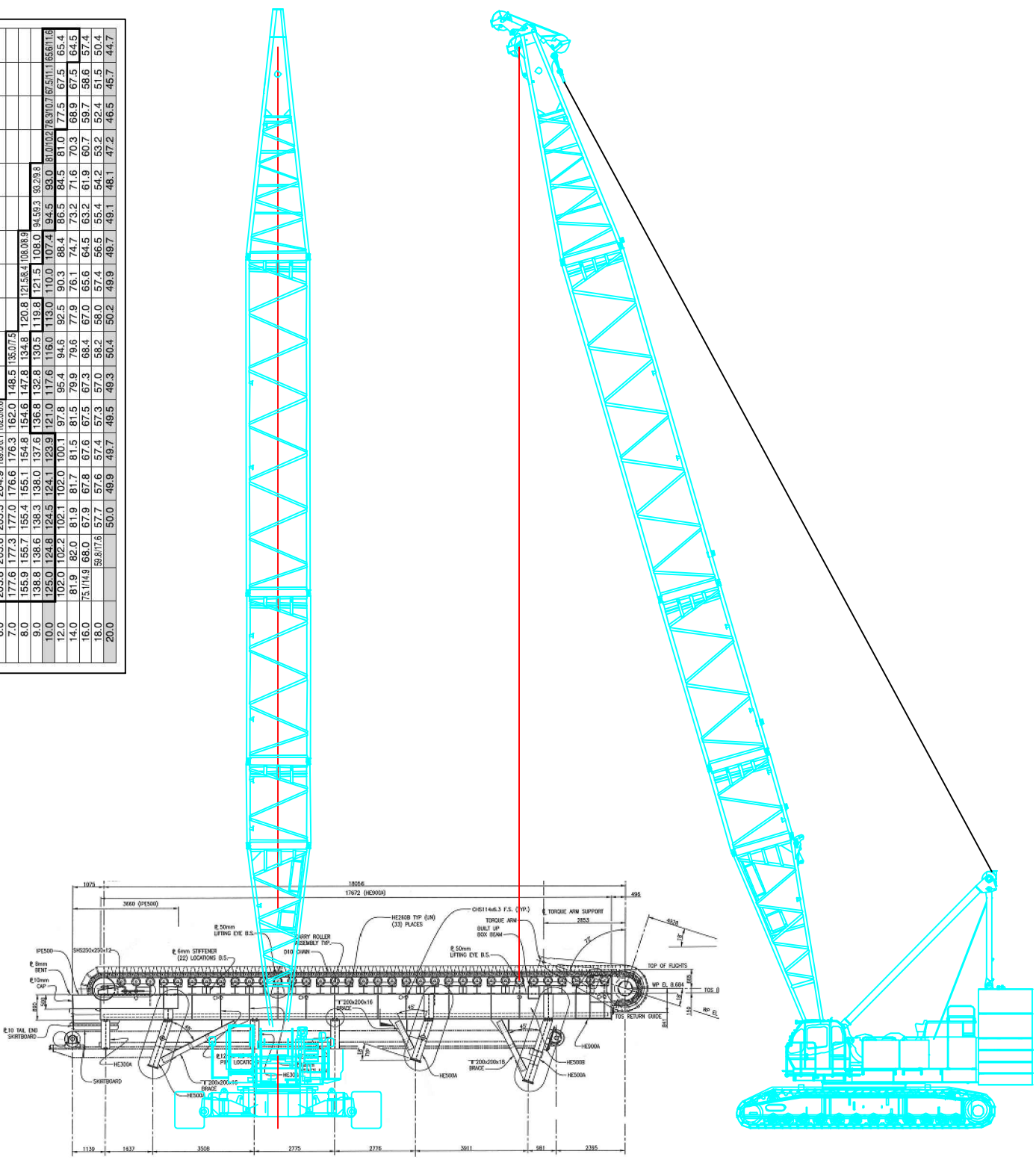


# Liftcrane Capacities 275 metric tons

Boom length (m)	15.25	18.30	21.35	24.40	27.45	30.50	33.55	36.60	39.65	42.70	45.75	48.80	51.85	54.90	57.95	60.95	64.00
Working mass (t)	275.0	275.0	275.0	275.0	275.0	275.0	275.0	275.0	275.0	275.0	275.0	275.0	275.0	275.0	275.0	275.0	275.0
4.3	269.4	269.4	269.4	269.4	269.4	269.4	269.4	269.4	269.4	269.4	269.4	269.4	269.4	269.4	269.4	269.4	269.4
4.5	244.3	244.3	244.3	244.3	244.3	244.3	244.3	244.3	244.3	244.3	244.3	244.3	244.3	244.3	244.3	244.3	244.3
5.0	223.5	223.5	223.5	223.5	223.5	223.5	223.5	223.5	223.5	223.5	223.5	223.5	223.5	223.5	223.5	223.5	223.5
5.5	205.8	205.8	205.8	205.8	205.8	205.8	205.8	205.8	205.8	205.8	205.8	205.8	205.8	205.8	205.8	205.8	205.8
6.0	177.6	177.3	177.0	176.6	176.3	176.0	175.6	175.3	175.0	174.6	174.3	174.0	173.6	173.3	173.0	172.6	172.3
7.0	159.8	158.7	158.4	158.1	157.8	157.5	157.2	156.9	156.6	156.3	156.0	155.7	155.4	155.1	154.8	154.5	154.2
8.0	139.8	138.6	138.3	138.0	137.7	137.4	137.1	136.8	136.5	136.2	135.9	135.6	135.3	135.0	134.7	134.4	134.1
9.0	120.0	118.7	118.4	118.1	117.8	117.5	117.2	116.9	116.6	116.3	116.0	115.7	115.4	115.1	114.8	114.5	114.2
10.0	102.0	100.7	100.4	100.1	99.8	99.5	99.2	98.9	98.6	98.3	98.0	97.7	97.4	97.1	96.8	96.5	96.2
12.0	81.9	80.6	80.3	80.0	79.7	79.4	79.1	78.8	78.5	78.2	77.9	77.6	77.3	77.0	76.7	76.4	76.1
14.0	65.1	63.8	63.5	63.2	62.9	62.6	62.3	62.0	61.7	61.4	61.1	60.8	60.5	60.2	59.9	59.6	59.3
16.0	51.1	49.8	49.5	49.2	48.9	48.6	48.3	48.0	47.7	47.4	47.1	46.8	46.5	46.2	45.9	45.6	45.3
18.0	39.1	37.8	37.5	37.2	36.9	36.6	36.3	36.0	35.7	35.4	35.1	34.8	34.5	34.2	33.9	33.6	33.3
20.0	29.1	27.8	27.5	27.2	26.9	26.6	26.3	26.0	25.7	25.4	25.1	24.8	24.5	24.2	23.9	23.6	23.3



**Max. Lifting Capacity: 250 t x 4.6 m**  
**Crane Boom Lifting Capacity**

Unit: metric ton  
Counterweight: 97.1 t, Carbody weight: 20.0 t

Boom length (m)	4.6	5.0	5.5	6.0	6.5	7.0	7.5	8.0	8.5	9.0	9.5	10.0	10.5	11.0	11.5	12.0	12.5	13.0	13.5	14.0	14.5	15.0	15.5	16.0	16.5	17.0	17.5	18.0	18.5	19.0	19.5	20.0
Capacity (t)	4.6	5.0	5.5	6.0	6.5	7.0	7.5	8.0	8.5	9.0	9.5	10.0	10.3	10.6	10.9	11.2	11.5	11.8	12.1	12.4	12.7	13.0	13.3	13.6	13.9	14.2	14.5	14.8	15.1	15.4	15.7	16.0

**CRAWLER CRANE 275 TON**  
**BOOM 36.6 METER**  
**R MAX 12 METER**  
**CAPACITIES 94.6 TON**  
**LOAD 94 MT/SIDE W/O DRIVE**

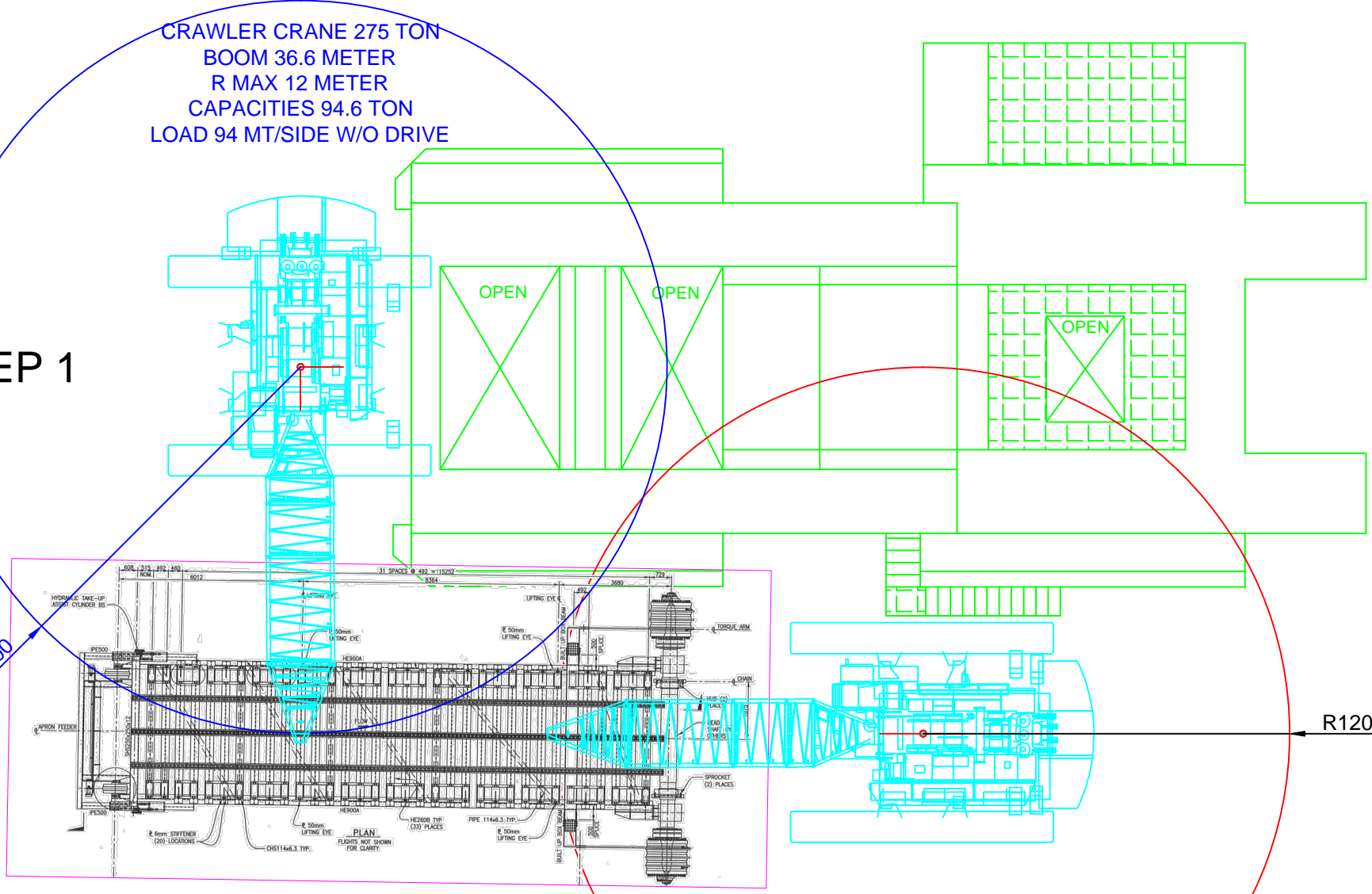
**STEP 1**

R12000

R12000

**LIFTING APRON FEEDER W/O DRIVE**

**CRAWLER CRANE 250 TON**  
**BOOM 36.6 METER**  
**R MAX 12 METER**  
**CAPACITIES 89.5 TON**  
**LOAD 73 MT/SIDE W/O DRIVE**







STEP 4

R12000

R12000

LIFTING APRON FEEDER W/O DRIVE

CRAWLER CRANE 250 TON  
BOOM 36.6 METER  
R MAX 12 METER  
CAPACITIES 89.5 TON  
LOAD 73 MT/SIDE W/O DRIVE

STEP 5

R12000

R12000

LIFTING APRON FEEDER W/O DRIVE

CRAWLER CRANE 275 TON  
BOOM 36.6 METER  
R MAX 12 METER  
CAPACITIES 94.6 TON  
LOAD 94 MT/SIDE W/O DRIVE

CRAWLER CRANE 250 TON  
BOOM 36.6 METER  
R MAX 12 METER  
CAPACITIES 89.5 TON  
LOAD 73 MT/SIDE W/O DRIVE

STEP 6

CRAWLER CRANE 275 TON  
BOOM 36.6 METER  
R MAX 12 METER  
CAPACITIES 94.6 TON  
LOAD 94 MT/SIDE W/O DRIVE

R12000

R12000

LIFTING APRON FEEDER W/O DRIVE

CRAWLER CRANE 250 TON  
BOOM 36.6 METER  
R MAX 12 METER  
CAPACITIES 89.5 TON  
LOAD 73 MT/SIDE W/O DRIVE

STEP 7

CRAWLER CRANE 275 TON  
BOOM 36.6 METER  
R MAX 12 METER  
CAPACITIES 94.6 TON  
LOAD 94 MT/SIDE W/O DRIVE

R12000

R12000

LIFTING APRON FEEDER W/O DRIVE

CRAWLER CRANE 250 TON  
BOOM 36.6 METER  
R MAX 12 METER  
CAPACITIES 89.5 TON  
LOAD 73 MT/SIDE W/O DRIVE



