

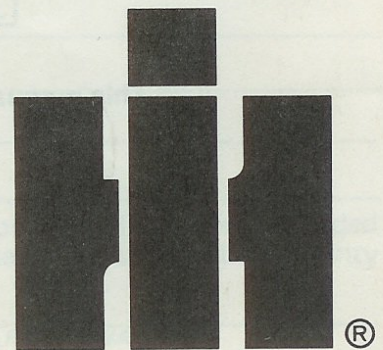
**INTERNATIONAL<sup>®</sup>**

**1A**

**Lawn Sweeper**

**INTERNATIONAL<sup>®</sup>**

**OPERATOR'S MANUAL**



INTERNATIONAL HARVESTER COMPANY

401 NORTH MICHIGAN AVE. / CHICAGO, ILLINOIS 60611 / U.S.A.

**1 084 483 RI. 10-7**

PRINTED IN UNITED STATES OF AMERICA

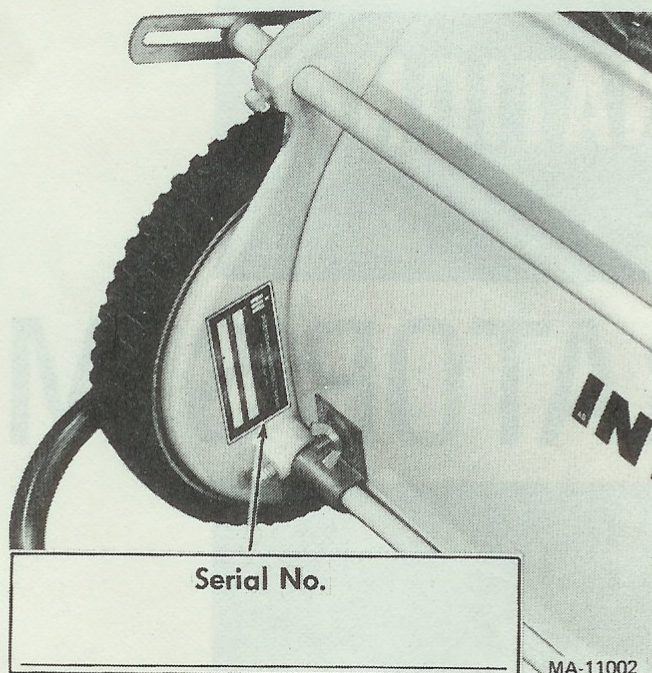
## To The Owner

Your new lawn sweeper is designed to meet today's exacting operating requirements. It is built for efficient performance, ease of operation, and with the ability to adjust to various conditions. These features lighten your work and shorten your hours on the job.

You are urged to consult your International Harvester dealer concerning unusual conditions or special applications. Let the experience of your dealer and the organization associated with him serve you.

Be sure to read the instructions for Adjusting and Operating in this manual. Check each item referred to and acquaint yourself with the adjustments required to obtain efficient operation and maximum trouble free service. Remember, a lawn sweeper which is properly lubricated and adjusted saves time and labor.

After the operating season, thoroughly clean your lawn sweeper and inspect it. Preventive maintenance pays dividends. Your dealer has original-equipment parts which assure proper fit and best performance. He is able to recondition your equipment to a like new condition.



This manual covers machines with Serial No. 1100001 and above

## DELIVERY SERVICE FOR INTERNATIONAL 1A LAWN SWEEPER

This form must be filled out by the dealer and signed by both the dealer and the customer at the time of delivery.

Delivered to \_\_\_\_\_ Dealer \_\_\_\_\_

R.R. No. \_\_\_\_\_ Box No. \_\_\_\_\_ Town \_\_\_\_\_

Town \_\_\_\_\_ Serial No. \_\_\_\_\_

State \_\_\_\_\_ Zip \_\_\_\_\_ Engine Serial No. \_\_\_\_\_

I have thoroughly instructed the buyer on the above described equipment which review included the Operator's Manual content, equipment care, adjustments, and safe operation. The warranty policy provisions were also explained and reviewed.

\_\_\_\_\_  
*DEALER'S SIGNATURE*

Above equipment and Operator's Manual have been received by me and I have been thoroughly instructed as to care, adjustments, safe operation and applicable warranty policy.

\_\_\_\_\_  
*DATE*

\_\_\_\_\_  
*OWNER'S SIGNATURE*

----- FOLD BACK HERE AND ADD CARBON -----

CUT ALONG THIS LINE FIRST

DEALER'S COPY

## DELIVERY SERVICE FOR INTERNATIONAL 1A LAWN SWEEPER

This form must be filled out by the dealer and signed by both the dealer and the customer at the time of delivery.

Delivered to \_\_\_\_\_ Dealer \_\_\_\_\_

R.R. No. \_\_\_\_\_ Box No. \_\_\_\_\_ Town \_\_\_\_\_

Town \_\_\_\_\_ Serial No. \_\_\_\_\_

State \_\_\_\_\_ Zip \_\_\_\_\_ Engine Serial No. \_\_\_\_\_

I have thoroughly instructed the buyer on the above described equipment which review included the Operator's Manual content, equipment care, adjustments, and safe operation. The warranty policy provisions were also explained and reviewed.

\_\_\_\_\_  
*DEALER'S SIGNATURE*

Above equipment and Operator's Manual have been received by me and I have been thoroughly instructed as to care, adjustments, safe operation and applicable warranty policy.

\_\_\_\_\_  
*DATE*

\_\_\_\_\_  
*OWNER'S SIGNATURE*

OWNER'S COPY

----- FOLD FORWARD HERE AND ADD CARBON -----

**DELIVERY SERVICE FOR INTERNATIONAL 1A LAWN SWEEPER**

This form must be filled out by the dealer and signed by both the dealer and the customer at the time of delivery.

Delivered to \_\_\_\_\_ Dealer \_\_\_\_\_

R.R. No. \_\_\_\_\_ Box No. \_\_\_\_\_ Town \_\_\_\_\_

Town \_\_\_\_\_ Serial No. \_\_\_\_\_

State \_\_\_\_\_ Zip \_\_\_\_\_ Engine Serial No. \_\_\_\_\_

I have thoroughly instructed the buyer on the above described equipment which review included the Operator's Manual content, equipment care, adjustments, and safe operation. The warranty policy provisions were also explained and reviewed.

Above equipment and Operator's Manual have been received by me and I have been thoroughly instructed as to care, adjustments, safe operation and applicable warranty policy.

\_\_\_\_\_  
OWNER'S SIGNATURE

\_\_\_\_\_  
DATE

REGIONAL OFFICE COPY

DELIVERY SERVICE FOR INTERNATIONAL 1A LAWN SWEEPER

# INTRODUCTION

The lawn sweeper is designed for use with all models of International® Cub Cadet® Tractors, and International® Cadet Riding Mowers.

If the lawn sweeper is to be attached to a riding

mower equipped with a rear discharge mower, the lawn sweeper will operate more efficiently as a bumper mounted assembly. Both the rear bumper and brackets (optional equipment) are available from your International Harvester dealer.

## ADJUSTING AND OPERATING

Refer to illustrations on page 2 when making any adjustments to the lawn sweeper.

### BRUSH HEIGHT ADJUSTMENT

Loosen the large wing nut to adjust the sweeping unit and obtain the desired brush height.

For grass clippings or leaves, adjust the hood extension (in back of hood) not seen, and the brushes to the highest positions. Loosen the wing nuts on the hood clamps to reposition the hood extension. After a trial run on the lawn, should the settings be too high, lower slightly and try again until the correct setting is obtained.

For patio, sidewalk, and driveway sweeping, adjust the hood extension to the bottom position. The extension is set correctly when it does not drag or throw sweepings ahead of the sweeper. Also, adjust the brushes so they just contact the cement.

**NOTE:** Brush life may be prolonged by adjusting so that contact with the ground is light. The lighter the contact, the longer the wear and the easier the unit is to pull.

**NOTE:** If sweeper pulls hard, the brushes or hood extension is set too low.

### UNLOADING THE BASKET

The load is dumped from the basket by pulling basket forward with rope, causing the basket to pivot into a semi-inverted position. When load is discharged allow rope and basket to return to its normal position.

### LUBRICATION

Each time the sweeper is used or twice a day when the machine is used all day, apply a few drops of oil to the wheels and casters. Also, occasionally apply a drop or two of oil to the basket pivot points.

### CARE AND REPLACEMENT OF BRUSHES

The brushes used on the sweeper are of the finest quality and if properly used will give years of service. Should the bristles become bent from constant use, they can be straightened by reversing the brushes on the reel shaft.

To reverse or replace the brushes, proceed as follows:

Turn the sweeper upside down on the ground. Remove the cap screws which hold the brush sections to the reel shaft. Reverse and/or replace the brushes and retighten the cap screws.

### BASKET CARE

The basket is made of high quality canvas. To insure long basket life, empty after each use.

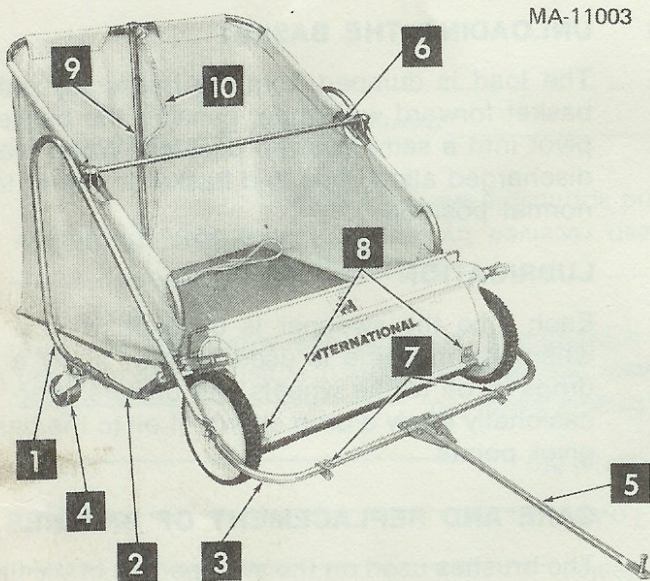
# SETTING UP

Remove all the parts from the shipping carton and arrange conveniently.

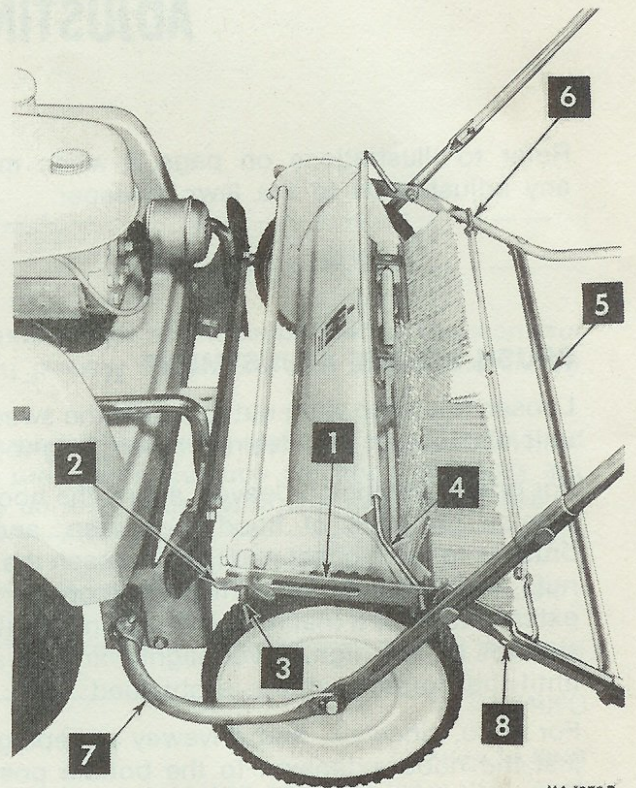
Bolts must be used in the holes in which they are found, or parts to which they are attached, unless otherwise instructed.

Lubricate the moving parts (See Lubrication) and see that they work freely.

Whenever the terms "left" and "right" are used, it should be understood to mean from a position behind and facing the direction of travel.



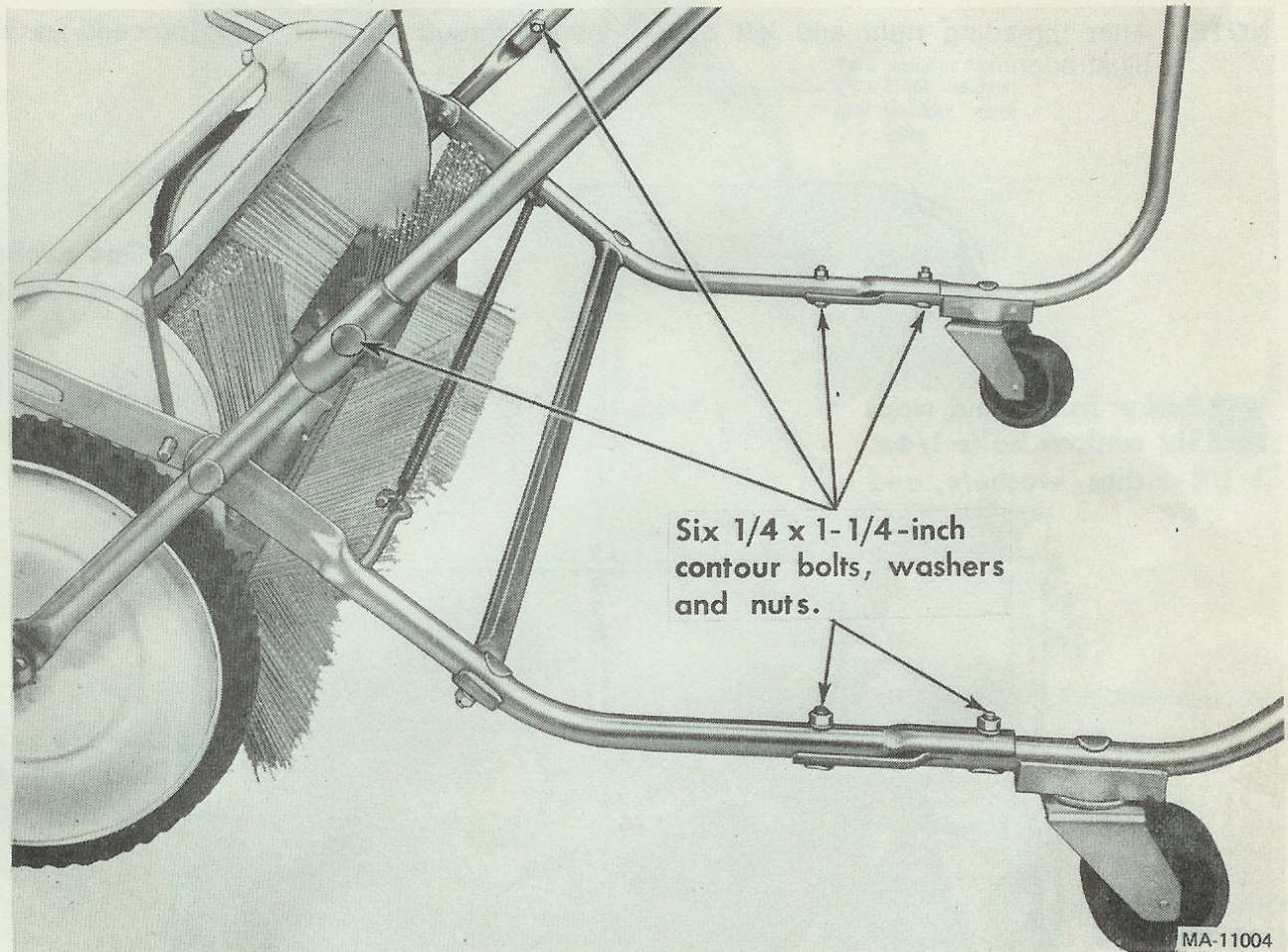
- 1 - Frame upper support
- 2 - Frame lower support
- 3 - Hitch yoke
- 4 - Caster
- 5 - Tow bar
- 6 - Basket reinforcing rod
- 7 - Spacer clamps
- 8 - Hood clamps with wing nuts
- 9 - Basket support rod
- 10 - Rope



- 1 - Brush adjustment bracket
- 2 - Wing nut
- 3 - Adjusting rod
- 4 - Hood control rod
- 5 - Frame support brace
- 6 - Basket stop hooks and elastic cord
- 7 - Hitch yoke
- 8 - Frame assembly

## SETTING UP

### STEP 1. ATTACHING UPPER AND LOWER FRAME SUPPORTS

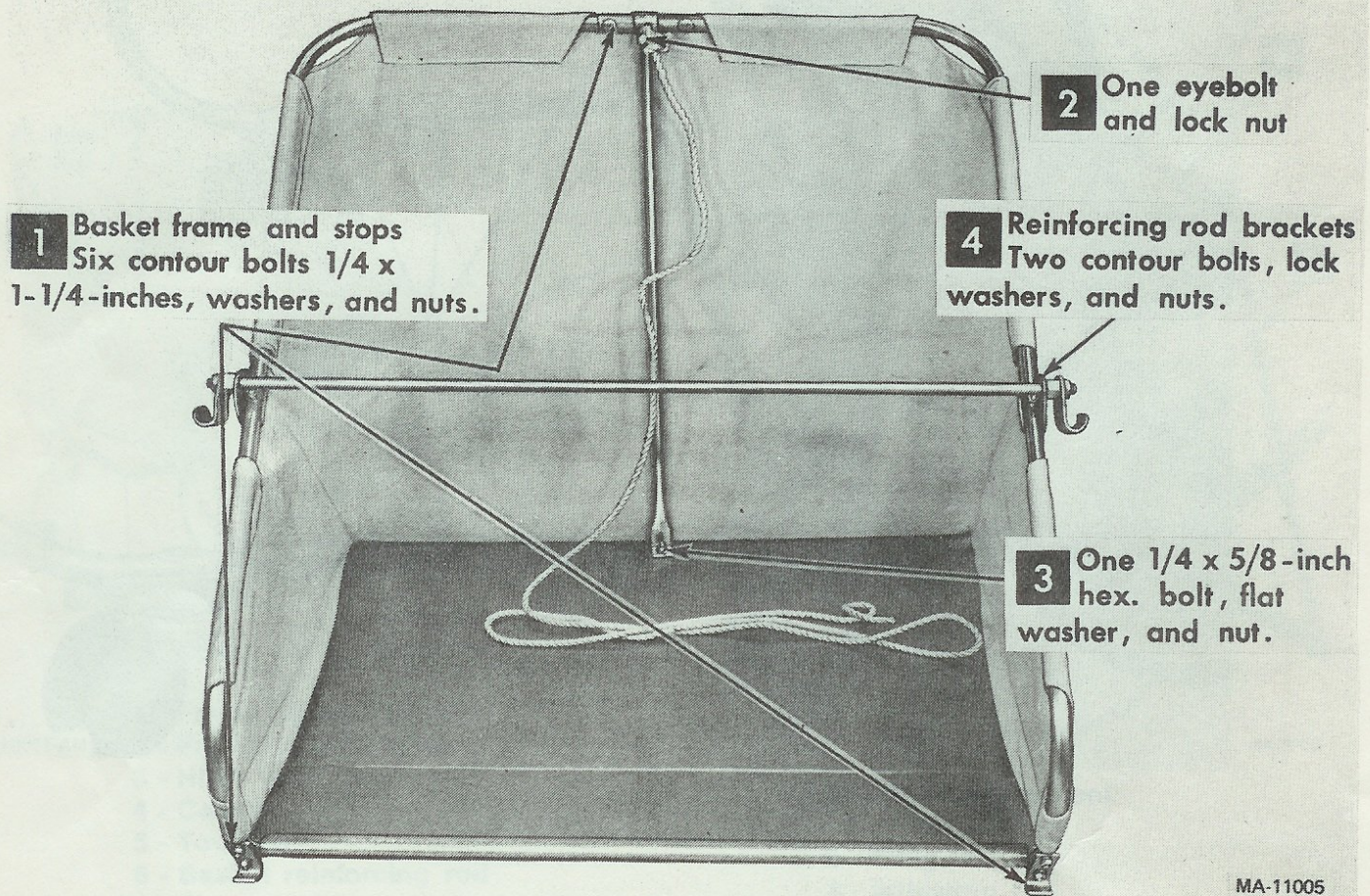




## SETTING UP

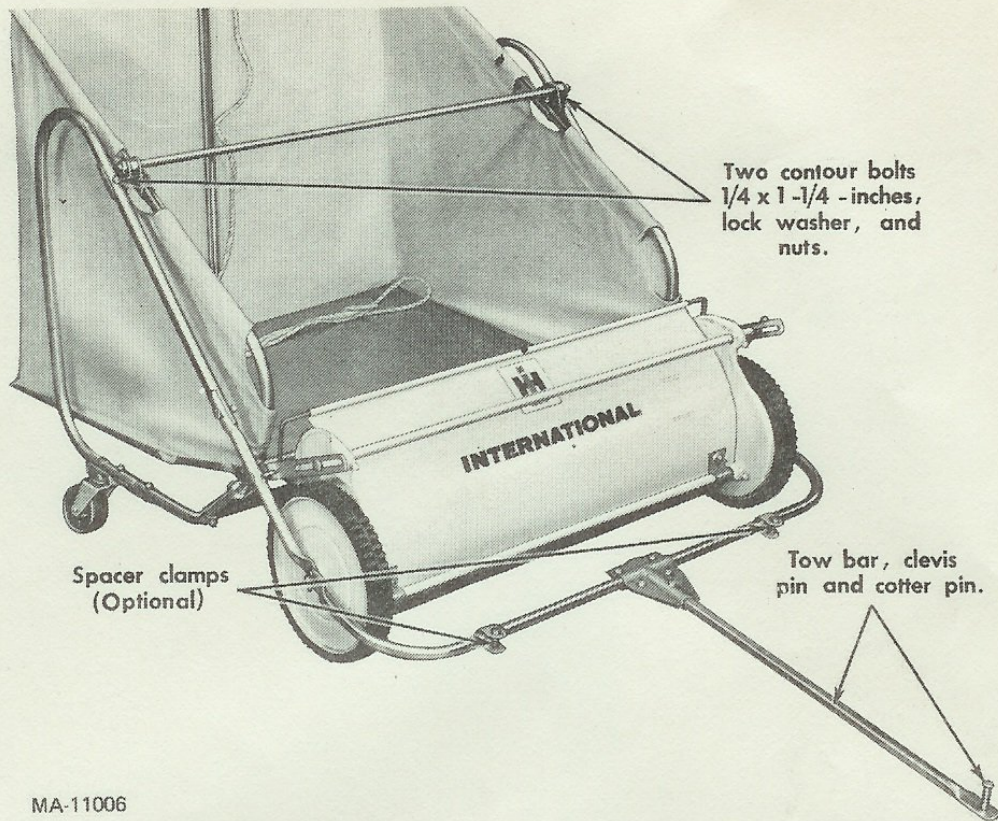
### STEP 2. BASKET ASSEMBLY - RIGHT AND LEFT BASKET FRAMES, BASKET SUPPORT ROD, BASKET STOPS, BASKET REINFORCING ROD AND BRACKETS, AND ROPE.

**NOTE:** After threading right and left basket frames through basket loops proceed as shown in illustration.



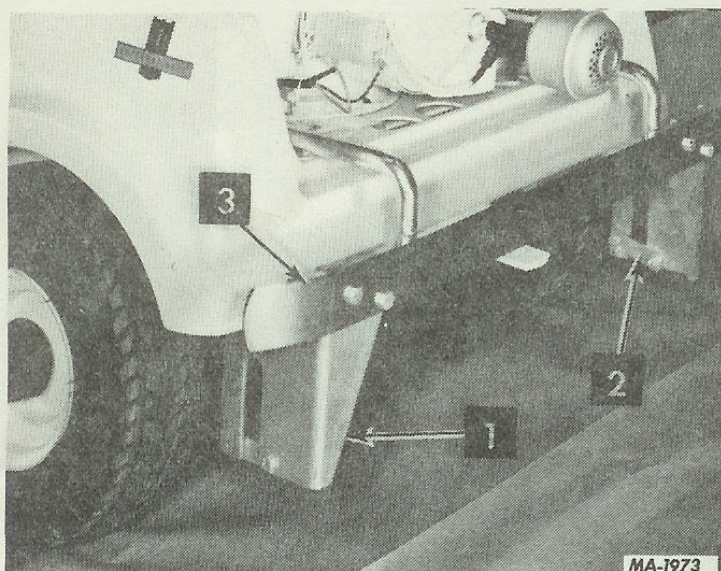
## SETTING UP

### STEP 3. ATTACHING BASKET ASSEMBLY TO FRAME SUPPORTS AND TOW BAR TO YOKE



**NOTE:** Place the basket assembly between the upper frame brackets, making sure the basket stops are behind the spring.

### STEP 4. ATTACHING LAWN SWEEPER TO TRACTOR OR RIDING MOWER



If the sweeper is to be attached to an International Cub Cadet Tractor or to an International Cadet Riding Mower, attach the tow bar to the hitch yoke.

If the sweeper is to be operated with a riding mower with rear bumper attachment and mounting package, attach the hitch brackets to the rear bumper as shown using four 5/16 x 1-inch bolts, nuts, and lock washers. See "Introduction".

Two spacer clamps are also required when the sweeper is bumper mounted to a riding mower to prevent lateral movement. These clamps must be centered on the hitch yoke and be positioned 17-3/4-inches apart. The hitch yoke fits into the bracket slots past the pivotal lock bars.

- 1 - Hitch brackets
- 2 - Lock bars
- 3 - Rear bumper

Optional